



LADIES IN BLACK!

ELITE FEMALE SALE

SALE: Wednesday 24TH APRIL 2024 at 2PM
ON THE PROPERTY and online with **bidr**



Comprising of: 22 Registered S drop in calf females | 20 Registered T drop open females





LADIES IN BLACK! ELITE FEMALE SALE

SALE: Wednesday 24TH APRIL 2024 at 2PM VIEWING FROM MIDDAY

Comprising of: 22 Registered S drop in calf females | 20 Registered T drop open females

ON THE PROPERTY, TURIROA, STATE HIGHWAY 2, WAIROA
and online with **bidr**

REFRESHMENTS PROVIDED

Andrew Powdrell, Phone: (06) 838 8805 | Mobile: 027 622 8088 | Email: arpowdrell@turiroa.co.nz
Emma Pollitt, PGG Wrightsons 027 597 5821 | **Neville Clarke**, Auctioneer 027 598 6537

 Turiroa Angus  @turiroaangus

www.turiroaangus.co.nz

PARTICIPATING COMPANIES:

PGG WRIGHTSON, Bidr®,
CARRFIELDS, FERGUS RURAL,
L.I. REDSHAW, HAZLETT LIMITED.
Overriding commission of 6%
to outside companies.

**PLEASE BRING THIS CATALOGUE
TO THE SALE**

WELCOME TO TURIROA

Holding a Heifer Sale has not been a decision that was made lightly. This year we celebrate 80 years of breeding here at Turiroa and we wanted to celebrate and acknowledge this special milestone. We contemplated putting up some older cows or selling embryos and/or semen but after sleeping on it for several nights and reflecting on many things the "Ladies in Black" Elite Female Sale was born.

As a stud we have embarked on a large ET programme for several years and felt we had enough heifers and depth within the herd to hold this celebratory sale without compromising our 2 yr bull sale or yearling bull sales.

These 42 catalogued heifers have come from the heart of our program. They are NOT surplus heifers or culls. These heifers would all be retained by us if we were not having the sale. A fair portion of them are genuine X FACTOR heifers and they all have 80 years of breeding behind them for phenotype and maternal attributes. There will be some great future matriarch and donor cows amongst them. We are extremely proud to present these heifers to you and this is the first time we have opened up the herd like this.

Every heifer in this catalogue has passed an independent inspection for soundness. You will see the AA logo next to each lot number. The S (21 born) were AI'd to Millah Murrah Rembrandt R48, who was sold for \$240,000 in 2021 and has been described as a "work of art" from any angle, and our own Turiroa Complete 18P250 who was sold to Oregon Angus at our record breaking 2020 Sale. Complete was one of the stand out bulls at the recent Wairarapa Ward Tour and is currently being marketed in Australia, where he has been described as a "Kiwi Gem". These heifers brothers were sold at our highest ever averaging sale last year where they averaged \$12,861 - the second highest sale average in NZ. Hence you will see that quality in these heifers. An absolutely outstanding run of breeders with many of them tracing back to the very best NZ born bulls produced in the last 30 years. Cover bulls after AI were Turiroa Toughnut 21S634 and Black Ridge Saba R50.

The T (2022 born) open heifers are all HD50K tested. This is something we will be bringing in to the herd going forward to give the EBV's greater accuracy and therefore providing us and you with more confidence that the EBV's are less likely to change dramatically. The T drop heifers have

some exciting new genetics with two stunning Millah Murrah Paratrooper daughters which could quite well be the first Paratrooper females on offer in NZ. As well as five lovely Kaharau Furnace Q308 daughters amongst others. Sale heifers are grass fed, we do not feed crops to any of our cattle. They have been vaccinated twice for BVD, 7 in 1 and are tested free of any genetic diseases. All are TB status C10 and are backed by our two year guarantee for soundness.

As I write this forward it's amazing now much these heifers have come on since being videoed and photographed some weeks ago. After having just come down from the hills you will see what I mean when you view them in the flesh! Heifers are available for viewing prior to the sale by contacting Andrew, Emma Pollitt, Neville Clarke or your local agent. Videos of the sale heifers may be viewed on BIDR. We welcome you to Turiroa and we know these heifers will add success to your own breeding programmes. We wish you all the best with your purchasers.

Andrew, Tracey, Toby, George and Ella Powdrell



Welcome to the Turiroa Elite Female Sale. 2024 marks 80 years of breeding pedigree Angus cattle for Turiroa, and to celebrate that fact, the Powdrell family are offering 42 exceptional heifers from the heart of the herd. Never before offered to the public, these females boast generations of careful selection, and represent the integrity of the Turiroa breeding principals – type, soundness and constitution. In an ordinary year, these heifers would be retained as future dams in the programme, producing the consistent lines of sale bulls we have all come to appreciate over the years.

My first impression of these heifers when doing the initial draft in January will be much like yours – femininity with grunt. Bone without coarseness. Softness with true breed character. These girls display the maternal attributes we adore in our Angus cows. Genuinely hill country born and raised, they bare the ability to shift to any corner of New Zealand and do their prefix proud. They come backed with pedigrees which sport some of the most prolific bulls in the country, taking the guesswork out of their potential.

In my time working alongside Andrew, Tracey and the late Rick, Ive gained valuable insight into the objectives and direction of Turiroa. Their passion is all consuming and tells of their commitment to drive the stud forward, securing its place for the next 80 years. These heifers are a credit to them, and the result of their current position where tradition meets progress. The hard work has been done. Now is the time to revel in the opportunity to take home a slice of their pie.

Emma Pollitt,
PGG Wrightson Livestock Genetics Representative

The logo for PGG Wrightson Livestock, featuring a stylized white wave graphic above the text "PGG Wrightson Livestock" in a white, sans-serif font, all contained within a black rounded rectangular background.

PGG Wrightson Livestock

Breeding Better Business

As part of New Zealand's largest Livestock network, our team of Genetics Specialists have the best advice, more contacts and greater reach.

If you're looking for a planned approach to success, give us a call today.

EMMA POLLITT

Genetics Specialist
027 597 5821

CAM HEGGIE

Auctioneer
027 501 8182

HAMISH HOLST

Livestock Representative
0274 434 4066

CHRIS HURLSTONE

Livestock Representative
027 598 6542

MASON BIRRELL

Livestock Representative
027 496 7253

JAMIE HAYWARD

Regional Livestock Manager
027 434 7586

ALEX CHRISP

Livestock Representative
027 801 0104

CODY CLARK

Livestock Representative
0274 469 969

TONY HOLDEN

Livestock Representative
027 598 1538

www.pggwrightson.co.nz/livestock



fb.com/pgwlivestock



instagram.com/pgwlivestock



ICIB | BROKERWEB
Insurance & Risk Advisory

BULL INSURANCE? Yes, we can help.
Scan to find out more.



CONDITIONS OF SALE:

- The sale will be conducted with the conditions of sale of the Wairoa Stock and Station Agents Association .
- Delivery of females will be ASAP after the sale day and organised by Turiroa . Delivery is at the expense of the purchaser.
- Due date for payment on all cattle sold at this sale is 14 (fourteen) days from the date of sale.
- Fertility Clause: All 2021 born (S) drop females have been PTIC on the 9/02/24 by Helen Taylor of Farm Vets Wairoa and are guaranteed in calf. If the purchaser wishes to avail themselves of further pregnancy tests it must be completed prior to delivery at their own expense. The sires related to each mating will be listed with each lot.
- Each lot becomes the property of the purchaser at the fall of the hammer.
- Any female sold in this sale within a 20 km radius of the Turiroa property will not be eligible for stud book transfer if the purchaser or ultimate owner intends establishing a registered and/or recorded pedigree herd. This includes grazing and/or share farming.
- Everyone attending this sale does so at their own risk. Turiroa accepts no responsibility for injury or death. Please use common sense around the cattle and buildings.
- All purchases must communicate their NAIT Number to the vendor on the buyers instructions slip at the rear of the catalogue. Turiroa NAIT number - 4633
- DISCLAIMER: whilst all due care and attention has been paid to accuracy in the compilation of this catalogue neither the vendors, the selling agents or representatives therefore assume any responsibility whatsoever for the correctness use or interpretation of the information on animals included in this sale catalogue. Insurance is recommended.

- All intending purchasers must register at the PGG Wrightson Ltd Livestock (PGW) sales office prior to the sale.
- The New Zealand Stock & Station Agent's Association Conditions of Sale apply. These terms can be inspected at the registration desk and on the wall in the auction room.
- PGW's Monthly Account Terms of Trade also apply to the extent deemed relevant by PGW. The current versions of PGW's Monthly Account Terms of Trade are also available online at:
- www.pggwrightson.co.nz/Our-Company/Terms-and-Conditions or in hardcopy on request.
- On behalf of the vendor, PGW will pay a purchasing rebate of 6% of the purchase price excluding GST, plus GST, to livestock companies and recognised independent livestock agents with a PGW Monthly Account who have introduced buyers to PGW before the sale and/or accompanied buyers to the sale.

PLEASE NOTE:

- Accredited brucellosis and tuberculosis C10 free herd.
- Strictly commercial orientated. Turiroa heifers are not overfed prior to sale.
- Sale heifers independently AA inspected and guaranteed for soundness for 2 years.
- Performance recorded and carcass scanned. T drop heifers HD50K tested.
- Our cattle are freeze branded for easy identification.
- 80 years in the business.
- All sale heifers tested free of genetic conditions.

SOUNDNESS GUARANTEE:

All lots contained within this catalogue are covered by our 2 year warranty with regard to soundness. In the unlikely event that a heifer is to become unsound and not be covered by normal insurance we will refund a portion of the purchase price depending on the length of time since purchase. Full refund within the first year of purchase and half between the first and second year of purchase minus salvage costs.



This sale will be hosted by bidr[®] (bidr.co.nz) as a HYBRID ON-FARM auction, with online bidding and a live-stream available for online purchasers.

All intending online purchasers must register with bidr[®] using an account held with one of the bidr[®] partner agencies in advance of the sale date.

The bidr[®] team is available to assist intending purchasers with signing up and registering – please call 0800 TO BIDR (0800 86 2437), or email enquiries@bidr.co.nz for assistance at any point.

Alternatively, contact your local bidr[®] representative:

Caitlin Barnett

Sales and Operations Manager
027 405 6156

Bruno Santos

Upper North Island Territory Manager
027 221 8276

Aimee Flynn

Lower North Island Territory Manager
027 282 1710

Mckenzie Alfeld

Upper South Island Territory Manager
027 341 8066

Bianca Perkins

Upper South Island Territory Manager
027 732 0006

Sam Murphy

Lower South Island Territory Manager
027 243 2736

Olivia Manley

Sales Coordinator
027 348 6354

EBVS EXPLAINED:

TransTasman Angus Cattle Evaluation (TACE) EBVs and selection indexes remove the effects of non-genetic factors (e.g. feeding regimes, animal age) from what is seen and measured to provide the best measure of an animal's genetic merit. TACE information should always be used in conjunction with other selection criteria, including visual assessment.

A BEST PRACTICE GUIDE TO SELECTING YOUR NEXT ANGUS NEW ZEALAND SIRE


A TACE Guide to Animal Selection allows you to select the best genetics for your herd in four easy steps:

1. Identify the **Angus New Zealand selection index** of most relevance to you.
2. **Rank animals** using the chosen selection index.
3. Consider the individual EBVs of importance.
4. Consider other traits of importance (e.g. visual assessment).

The majority of these steps can be undertaken online, allowing you to generate a shortlist of bulls for potential purchase ahead of sale day. The searchable version of this catalogue can be found online here www.angusnz.com.

TRANSTASMAN ANGUS CATTLE EVALUATION

The Angus New Zealand Association publishes the following TACE EBVs and Selection Indexes. Please note that only EBVs from the same TACE analysis can be directly compared.

Growth EBVs	Fertility & Birth EBVs	Carcase EBVs	Other EBVs	Selection Indexes
Birth Weight	Scrotal Size	Carcase Weight	Docility	Self Replacing
200 Day Growth	Days to Calving	Eye Muscle Area		Angus Pure
400 Day Weight	Gestation Length	Rib Fat		Heifer Dairy Terminal
600 Day Weight	Calving Ease Direct	Rump Fat		Scan below for more details
Milk (Maternal)	Calving Ease Daughters	Retail Beef Yield		
Mature Cow Weight		Intramuscular Fat		

More information, including EBV descriptions and how to use them, can be found in the **Using & Understanding TACE EBVs** booklet. Scan the QR code for more details.



<https://breedplan.une.edu.au/media/dtqpdm34/using-and-understanding-breedplan-ebvs.pdf>

Details about the Angus Selection indexes can be found at:
<https://breedplan.une.edu.au/media/bqjbnnbh/using-new-zealand-angus-selection-indexes.pdf>

The BREEDPLAN Estimated Breeding Values (EBVs) contained within this sale catalogue were compiled by the Agricultural Business Research Institute (ABRI) from the data supplied by breeders. Neither Angus NZ nor ABRI oversee or audit the collection of this data.



INDEPENDENTLY INSPECTED

**ALL HEIFERS IN THIS CATALOGUE HAVE BEEN
INDEPENDENTLY INSPECTED**

This Inspection service is offered by Angus New Zealand to breeding members as a form of quality assurance and indicates that the animal has passed inspection **on the specific day it was viewed**. The inspection is carried out by an approved Angus NZ Inspector, and animals of a minimum age which **pass** this inspections may assume an "Independently Inspected" status and may be promoted under the associated Angus NZ "Independently Inspected / AA Tick" logo (attached).

Inspections are carried out in accordance with the Angus NZ Inspection Manual 2011.

ANGUS NZ BREED AVERAGES FOR YEAR 2022 BORN CALVES

DIR	DTRS	GL	BWt	200	400	600	MCWt	Milk	SS	DC	CWt	EMA	Rib	Rump	RBV%	IMF%
+1.6	+1.1	-4.0	+4.3	+42	+77	+100	+90	+14	+2.0	-4.2	+48	+3.3	+1.1	+1.1	+0.4	+0.9

INDEXES	SR	AP	HDT
	+\$113	+\$113	+\$105

Disclaimer: Although every care has been taken to ensure accuracy, no responsibility is accepted for any error or omission that might be contained therein. The BREEDPLAN Estimated Breeding Values (EBVs) contained within this sale catalogue were compiled by the Agricultural Business Research Institute (ABRI) from the data supplied by breeders. Neither Angus NZ nor ABRI oversee or audit the collection of this data.

O.S.H.

Under the Occupation Health and Safety Act 1992 we are required to advise people of possible hazards.

- Cattle Movements**
- Vehicles and Machinery**
- Cattle Yards: Slippery Surface**
- Pavilion: Seating**

Use this table as a guide to compare individual animals with the current genetic level of the breed.

MARCH 2024 TRANSTASMAN ANGUS CATTLE EVALUATION - PERCENTILE BANDS FOR ALL 2022 BORN ANIMALS																				
	Calv-Ease		Birth		Growth				Fertility			Carcase				Index				
	Dir	Dtrs	GL	Bwt	200	400	600	Mwt	Milk	SS	DC	Cwt	EMA	Rib	P8	RBV	IMF	SRI	API	HDT
	%		days	kg		kg	kg			cm	days	kg	sq.cm	mm		%		\$		
Top 1%	+10.2	+8.6	-9.3	+0.0	+63	+111	+144	+146	+26	+4.5	-7.6	+84	+10.9	+4.9	+6.4	+1.8	+4.0	+184	+206	+144
Top 5%	+8.3	+7.0	-7.4	+1.3	+56	+100	+130	+127	+22	+3.6	-6.5	+73	+8.3	+3.7	+4.6	+1.4	+3.0	+161	+177	+135
Top 10%	+7.1	+5.9	-6.6	+2.0	+52	+94	+123	+119	+21	+3.2	-5.9	+68	+7.1	+3.1	+3.8	+1.1	+2.5	+149	+162	+130
Top 20%	+5.6	+4.5	-5.7	+2.8	+48	+88	+115	+109	+18	+2.8	-5.3	+61	+5.6	+2.4	+2.8	+0.9	+1.9	+136	+145	+123
Top 30%	+4.3	+3.3	-5.0	+3.4	+46	+84	+109	+101	+17	+2.5	-4.8	+56	+4.7	+1.9	+2.1	+0.7	+1.5	+127	+133	+117
Top 40%	+3.2	+2.3	-4.4	+3.9	+43	+80	+105	+95	+16	+2.2	-4.5	+52	+3.9	+1.5	+1.6	+0.5	+1.2	+119	+123	+112
Top 50%	+2.0	+1.3	-4.0	+4.3	+41	+77	+100	+90	+14	+2.0	-4.2	+48	+3.2	+1.1	+1.1	+0.4	+0.9	+112	+113	+108
Top 60%	+0.9	+0.3	-3.4	+4.7	+39	+74	+96	+84	+13	+1.8	-3.8	+44	+2.5	+0.7	+0.7	+0.3	+0.6	+106	+104	+102
Top 70%	-0.4	-0.8	-2.9	+5.2	+37	+71	+91	+78	+12	+1.6	-3.5	+40	+1.7	+0.3	+0.1	+0.1	+0.3	+98	+93	+96
Top 80%	-2.1	-2.1	-2.3	+5.7	+35	+67	+86	+71	+11	+1.3	-3.0	+36	+0.9	-0.2	-0.5	-0.1	+0.0	+89	+81	+89
Top 90%	-4.5	-4.0	-1.3	+6.4	+31	+61	+78	+61	+9	+0.8	-2.4	+30	-0.3	-1.0	-1.6	-0.3	-0.5	+77	+63	+79
Top 95%	-6.7	-5.8	-0.5	+7.1	+28	+56	+71	+52	+7	+0.5	-1.9	+24	-1.4	-1.7	-2.4	-0.6	-1.0	+67	+49	+70
Top 99%	-12.2	-10.0	+1.2	+8.5	+22	+47	+58	+33	+4	-0.2	-0.9	+12	-3.4	-3.1	-4.2	-1.1	-1.9	+46	+20	+47

▲ Negative (lower) values more favourable

▲ Negative (lower) values more favourable

TURIROA COMPLETE



MILLAH MURRAH
REMBRANDT



MATING SIRE

MILLAH MURRAH REMBRANDT R48^{PV}

BORN: 28/01/20

MILLAH MURRAH
PARATROOPER P15^{PV}

EF COMMANDO 1366^{PV}

EF COMPLEMENT 8088^{PV}

RIVERBEND YOUNG LUCY W1470

MILLAH MURRAH ELA M9^{PV}

MILLAH MURRAH HIGHLANDER G18^{SV}

MILLAH MURRAH ELA K127^{SV}

MILLAH MURRAH
ABIGAIL N60^{PV}

MILLAH MURRAH KINGDOM K35^{PV}

HINGAIA 469

MILLAH MURRAH FLOWER G41^{PV}

MILLAH MURRAH ABIGAIL H150^{SV}

TE MANIA EMPEROR E343^{PV}

MILLAH MURRAH ABIGAIL D9^{SV}



MARCH 2024 TRANSTASMAN ANGUS CATTLE EVALUATION

Dir	Dtrs	GL	B/Wt	200 Wt	400 Wt	600 Wt	Mwt	Milk	SS	DC	Cwt	EMA	Rib	Rump	RBV %	IMF%
+2.0	+0.6	-5.1	+4.9	+54	+98	+130	+96	+15	+2.7	-4.7	+74	+8.5	+1.7	+2.5	+0.8	+1.3
78%	63%	98%	98%	96%	95%	91%	86%	77%	92%	49%	80%	81%	81%	81%	75%	81%

Note: EBVs taken from Angus Australia Database

AI Sire -Millah Murrah Rembrandt R48. Rembrandt was sold at the 2021 record breaking Millah Murrah sale for \$240,000. He has been described as a 'work of art from any angle' and has a good data set that suited our program. We have used him by way of AI and ET on selected cows and are excited to see his progeny on the ground.

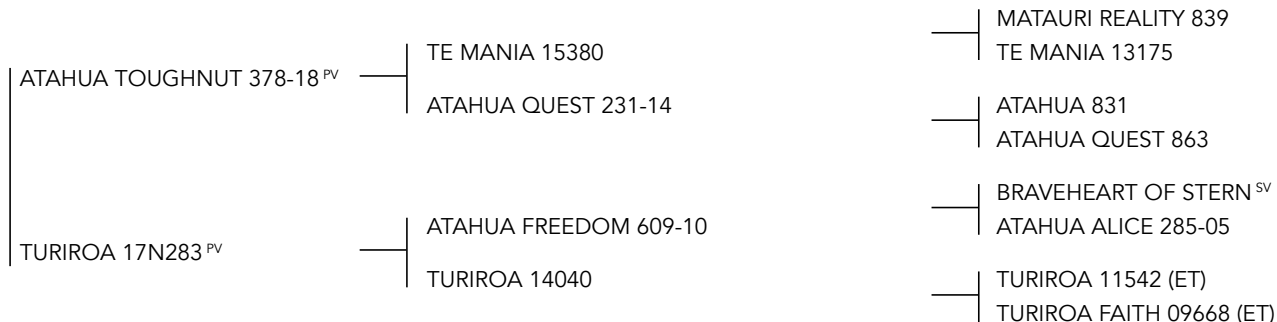
TURIROA TOUGHNUT



MATING SIRE

TURIROA TOUGHNUT 21S634^{PV}

BORN: 26/08/21

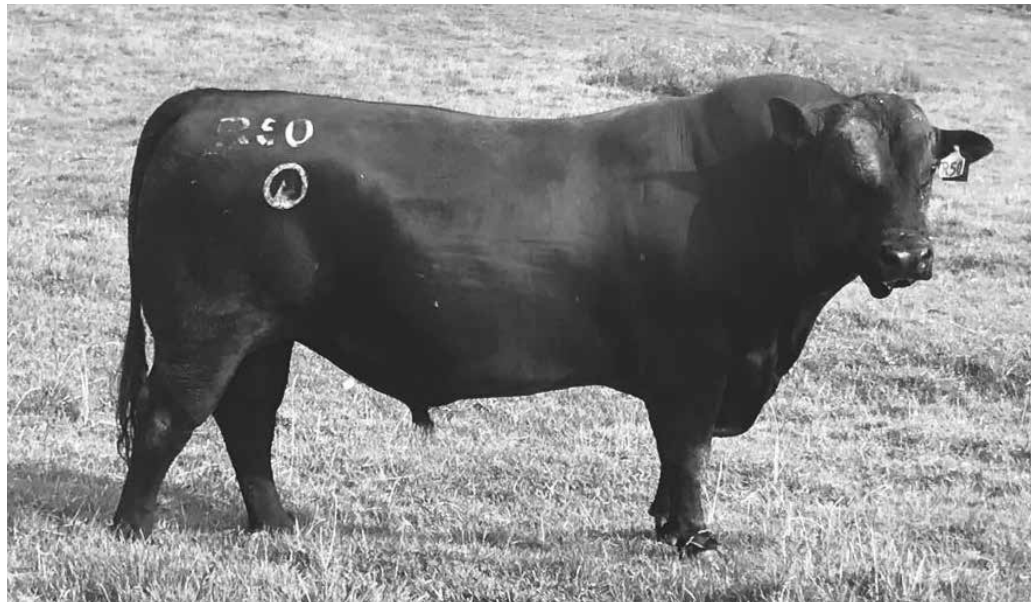


MARCH 2024 TRANSTASMAN ANGUS CATTLE EVALUATION

Dir	Dtrs	GL	B/Wt	200 Wt	400 Wt	600 Wt	Mwt	Milk	SS	DC	Cwt	EMA	Rib	Rump	RBY %	IMF%	INDEXES	
+2.8	-4.7	-8.8	+4.4	+36	+79	+101	+98	+9	+3.1	-4.8	+49	+9.0	+3.1	+3.7	+0.6	+1.9	SR	AP
63%	53%	81%	88%	84%	82%	83%	79%	72%	78%	41%	71%	68%	69%	70%	61%	73%	+\$150	+\$154

Cover Bull - Turiroa Toughnut 21S634. Toughnut was used as a yearling and retained by us. He has an impeccable data set and is developing into a useful young sire. His pedigree is bombproof with Braveheart, and Reality in the background.

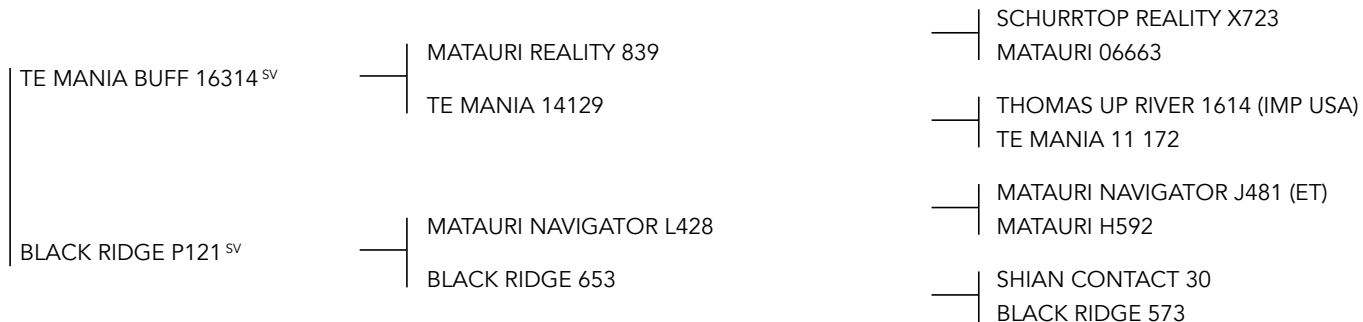
BLACK RIDGE
SABA



MATING SIRE

BLACK RIDGE SABA R50^{PV}

BORN: 29/08/20



MARCH 2024 TRANSTASMAN ANGUS CATTLE EVALUATION

Dir	Dtrs	GL	B/Wt	200 Wt	400 Wt	600 Wt	Mwt	Milk	SS	DC	Cwt	EMA	Rib	Rump	RBY %	IMF%	INDEXES	
																	SR	AP
+8.2	+7.7	-7.1	+2.6	+36	+76	+105	+104	+20	+3.0	-5.3	+48	+5.1	+4.3	+4.8	-0.2	+0.4	\$112	\$131
62%	52%	80%	90%	87%	86%	86%	81%	72%	81%	42%	74%	71%	73%	73%	65%	74%		

Cover Bull- Black Ridge Saba R50. Saba was purchased as a yearling. He is a good calving ease sire and has a well balanced set of EBV's. He will have a few very tidy sons in our Bull Sale this year and has crossed well over our females.

LOT 1
TURIROA 21S778^{PV}



LOT: 1

TURIROA 21S778^{PV}

BORN: 15/09/21
ID No.: 15603121S778

ATAHUA TOUGHNUT 378-18^{PV}

TE MANIA 15380
ATAHUA QUEST 231-14

MATAURI REALITY 839
TE MANIA 13175
ATAHUA 831
ATAHUA QUEST 863

RANGATIRA 181440^{SV}

MT MABLE THOR 660
KAHARAU 11-9292^V

MT MABLE FAT BOY 373
MT MABLE EMPRIAL 477
KAHARAU LANCER 699
KAHARAU 07-8075

JOINING DETAILS:

Date Scanned: 9/02/24
Days in Calf: 75 days

AI'd on the 3/11/23 to MM Rembrandt R48. Cover bulls 15/11/23 to 3/01/24
-Turiroa Toughnut 21S634, Black Ridge Saba R50



MARCH 2024 TRANSTASMAN ANGUS CATTLE EVALUATION

Dir	Dtrs	GL	B/Wt	200 Wt	400 Wt	600 Wt	Mwt	Milk	SS	DC	Cwt	EMA	Rib	Rump	RBY %	IMF%
-0.4	-0.9	-4.2	+6.8	+51	+94	+119	+110	+11	+3.0	-3.2	+67	+3.9	+1.2	+1.8	+0.0	+0.8
52%	43%	60%	73%	70%	71%	75%	68%	56%	61%	35%	61%	57%	61%	61%	56%	58%

An X factor young matron here that walks well, has width over the loin and a fantastic hindquarter. She possesses the style and quality that will enable her to breed top class off-spring. Nice spread of data across the board. She will be an asset in any program.

PURCHASER: _____

PRICE: _____



LOT 2
TURIROA 21S731^{PV}



LOT: 2

TURIROA 21S731^{PV}

BORN: 02/09/21
ID No.: 15603121S731

TURIROA 19Q421^{SV}

TAIMATE LATITUDE L7^{SV}
TURIROA 11874

MATAURI REALITY 839
TAIMATE 1380
STERN 0768
TURIROA 04295

JOINING DETAILS:

Date Scanned: 9/02/24
Days in Calf: 75 days

TURIROA 18P420^{PV}

TURIROA TYRANT 14843
TURIROA 131009^V

S CHISUM 6175 (IMP USA)
TURIROA 11853 (ET)
TURIROA BLACKHEART 10658 (ET)
TURIROA 10802

Al'd on the 3/11/23 to MM Rembrandt R48. Cover bulls 15/11/23 to 3/01/24
-Turiroa Toughnut 21S634, Black Ridge Saba R50



MARCH 2024 TRANSTASMAN ANGUS CATTLE EVALUATION

Dir	Dtrs	GL	B/Wt	200 Wt	400 Wt	600 Wt	Mwt	Milk	SS	DC	Cwt	EMA	Rib	Rump	RBY %	IMF%
-0.2	+1.4	-4.3	+5.1	+42	+81	+106	+90	+17	+2.8	-3.8	+56	+4.4	+1.7	+2.4	+0.5	+0.5
44%	35%	46%	71%	67%	68%	72%	66%	46%	47%	29%	56%	52%	58%	57%	52%	51%

Cracking heifer here with a tremendous outlook.Strong but feminine, carrying herself very well. In her pedigree are some maternal legends in Reality,Braveheart, and S Chisium who was one of the more successful American bulls. Nice tidy data set, she has it all !

PURCHASER: _____

PRICE: _____



LOT 3
TURIROA 21S722^{SV}



LOT: 3

TURIROA 21S722^{SV}

BORN: 05/08/21
ID No.: 15603121S722

SHIAN RANGER 18-507^{PV}

MATAURI RANGER L362^{SV}
SHIAN 15-114

MATAURI OUTLANDER J487 (ET)
MATAURI H548
TANGIHAU KAINO H29
SHIAN 540

JOINING DETAILS:

Date Scanned: 9/02/24
Days in Calf: 100 days

272OF KAWATIRI

225 OF KAWATIRI
173 OF KAWATIRI^V

PONO OF KAWATIRI
179 OF KAWATIRI
YTHANBRAE HENRY VIII U8 (IMP USA)
83 OF KAWATIRI (ET)

Al'd on the 3/11/23 to MM Rembrandt R48.Cover bulls 15/11/23 to 3/01/24
-Turiroa Toughnut 21S634, Black Ridge Saba R50



MARCH 2024 TRANSTASMAN ANGUS CATTLE EVALUATION

Dir	Dtrs	GL	B/Wt	200 Wt	400 Wt	600 Wt	Mwt	Milk	SS	DC	Cwt	EMA	Rib	Rump	RBY %	IMF%
-2.0	+0.7	-4.1	+5.5	+47	+87	+118	+111	+15	+1.1	-3.7	+63	+4.3	-0.6	-0.9	+0.3	+2.1
47%	38%	53%	73%	69%	69%	73%	67%	53%	53%	31%	58%	55%	60%	59%	54%	54%

First of the Ranger daughters. Ranger sired our top price bull at our record breaking sale last year. She comes with our trademark deep spring of rib and in-built femininity and style. Handy EBV's with growth, CW and good IMF. Another one that's hard to fault.

PURCHASER: _____

PRICE: _____



LOT 4
TURIROA 21S781^{PV}



LOT: 4

TUIROA 21S781^{PV}

BORN: 13/08/21
ID No.: 15603121S781

SHIAN RANGER 18-507^{PV}

MATAURI RANGER L362^{SV}
SHIAN 15-114

MATAURI OUTLANDER J487 (ET)
MATAURI H548
TANGIHAU KAINO H29
SHIAN 540

JOINING DETAILS:

Date Scanned: 9/02/24
Days in Calf: 60 days

TUIROA L141

MATAURI COMPLETE F010 (ET)
GOLDWYN H617^V

SUMMITCREST COMPLETE 1P55 (IMP USA) on the 03/11/23 to Tuiroa Complete 18P250. Cover bulls 15/11/23 to 03/01/24-Tuiroa Toughnut 21S634, Black Ridge Saba R50
MATAURI 07776
S CHISUM 6175 (IMP USA)
WAITOMO 64



MARCH 2024 TRANSTASMAN ANGUS CATTLE EVALUATION

Dir	Dtrs	GL	B/Wt	200 Wt	400 Wt	600 Wt	Mwt	Milk	SS	DC	Cwt	EMA	Rib	Rump	RBY %	IMF%
-2.7	+2.6	-3.8	+5.8	+47	+83	+114	+98	+15	+1.6	-3.9	+58	+3.2	+0.9	+1.3	+0.1	+1.5
52%	41%	57%	74%	70%	71%	74%	69%	56%	57%	33%	60%	56%	61%	61%	55%	56%

One of the most rotund heifers in the line-up. Her depth and width is phenomenal! Some very successful bulls back in her pedigree, and her data set tidy across the page with good fats and IMF. Real opportunity here for someone to secure this top heifer and watch her develop into a bullet proof matron.

PURCHASER: _____

PRICE: _____



LOT 5
TURIROA 21S749^{PV}



LOT: 5

TURIROA 21S749^{PV}

BORN: 30/08/21
ID No.: 15603121S749

ATAHUA TOUGHNUT 378-18^{PV}

TE MANIA 15380
ATAHUA QUEST 231-14

MATAURI REALITY 839
TE MANIA 13175
ATAHUA 831
ATAHUA QUEST 863

TURIROA 17N278^{PV}

TANGIHAU KAINO H29
TURIROA 14043 (ET)^V

TE MANIA 09 624
TANGIHAU 10 - 85
BRAVEHEART OF STERN^{SV}
TURIROA 05425

JOINING DETAILS:

Date Scanned: 9/02/24
Days in Calf: 105 days

Al'd on the 3/11/23 to MM Rembrandt R48. Cover bulls 15/11/23 to 3/01/24
-Turiroa Toughnut 21S634, Black Ridge Saba R50



MARCH 2024 TRANSTASMAN ANGUS CATTLE EVALUATION

Dir	Dtrs	GL	B/Wt	200 Wt	400 Wt	600 Wt	Mwt	Milk	SS	DC	Cwt	EMA	Rib	Rump	RBY %	IMF%
-1.8	-1.9	-4.9	+6.0	+49	+86	+112	+86	+14	+2.8	-4.4	+62	+6.9	+2.7	+3.6	-0.2	+2.0
53%	44%	61%	74%	71%	71%	75%	70%	57%	62%	34%	60%	58%	62%	62%	57%	58%

Your modern day heifer with some good old East Coast qualities! Excellent dataset and yet she still has the style and femininity we like to see in our females. She has a maternal 1/2 sister in the sale at lot 37. Potential here.

PURCHASER: _____

PRICE: _____



LOT 6
TURIROA 21S697^{PV}



LOT: 6

TURIROA 21S697^{PV}

BORN: 14/08/21
ID No.: 15603121S697

SHIAN RANGER 18-507^{PV}

MATAURI RANGER L362^{SV}
SHIAN 15-114

MATAURI OUTLANDER J487 (ET)
MATAURI H548
TANGIHAU KAINO H29
SHIAN 540

TURIROA 16M210^{SV}

WHENUAPAPA CRUMBLE 8-10^{SV}
TURIROA TUNE 09681^V

TURIHAUA CRUMBLE Y167
ATAHUA QUEST 536-07
KAHARAU PRESIDENT 06-432
TURIROA 04322

JOINING DETAILS:

Date Scanned: 9/02/24
Days in Calf: 70 days

AI'd on the 03/11/23 to Turiroa Complete 18P250. Cover bulls 15/11/23 to 03/01/24-Turiroa Toughnut 21S634, Black Ridge Saba R50



MARCH 2024 TRANSTASMAN ANGUS CATTLE EVALUATION

Dir	Dtrs	GL	B/Wt	200 Wt	400 Wt	600 Wt	Mwt	Milk	SS	DC	Cwt	EMA	Rib	Rump	RBY %	IMF%
+1.5	+2.0	-6.4	+5.0	+43	+78	+115	+118	+13	+1.1	-3.0	+52	+0.3	+0.6	+0.2	+0.1	+0.9
52%	40%	54%	74%	71%	71%	75%	70%	54%	56%	33%	61%	56%	61%	60%	55%	55%

We have a lot of time for this heifer. Tremendous side on profile where she has a lovely top line and carry out. She possesses a lovely shoulder and kind head without being too masculine. She walks well and is hard to go past without her catching the eye. Great old school pedigree and future breeder in the making. Should be a three ticker!

PURCHASER: _____

PRICE: _____



LOT 7
TURIROA 21S680^{PV}



LOT: 7

TURIROA 21S680^{PV}

BORN: 13/08/21
ID No.: 15603121S680

BROOKWOOD P26 (ET)^{SV}

BRAVEHEART OF STERN^{SV}
LYNMAR JEWEL (ET)

HIGHLANDER OF STERN
STERN 3886
TURIHAUA CRUMBLE Y167
WAITERENUI SAGE 530

TURIROA 18P378 (ET)^{PV}

GOLDWYN H817^{SV}
TURIROA L098^V

S CHISUM 6175 (IMP USA)
GOLDWYN 512
MERCHISTON INFINITY 774
TURIROA 05439

JOINING DETAILS:

Date Scanned: 9/02/24
Days in Calf: 95 days

Al'd on the 3/11/23 to MM Rembrandt R48. Cover bulls 15/11/23 to 3/01/24
-Turiroa Toughnut 21S634, Black Ridge Saba R50



MARCH 2024 TRANSTASMAN ANGUS CATTLE EVALUATION

Dir	Dtrs	GL	B/Wt	200 Wt	400 Wt	600 Wt	Mwt	Milk	SS	DC	Cwt	EMA	Rib	Rump	RBY %	IMF%
-0.2	-3.1	-2.2	+5.7	+40	+78	+98	+83	+16	+1.6	-4.0	+46	+5.1	+1.5	+3.2	+0.5	+0.8
56%	47%	65%	73%	69%	71%	73%	69%	58%	64%	39%	60%	59%	62%	62%	57%	61%

Deep, square and thickset. Sure to catch the eye! Looking into her bulletproof pedigree all the favorites are there. Another with a good set of data across the page. EMA, fats and great type , she has it all.

PURCHASER: _____

PRICE: _____



LOT 8
TURIROA 21S729^{PV}



LOT: 8

TURIROA 21S729^{PV}

BORN: 11/08/21
ID No.: 15603121S729

TURIROA COMPLETE 18P250^{SV}

TURIROA COMPLETE 16M013^{SV}
TURIROA L094

MATAURI COMPLETE F010 (ET)
TURIROA 131003
TURIHAUA CRUMP E5 (ET)^{SV}
TURIROA 12925

JOINING DETAILS:

Date Scanned: 9/02/24
Days in Calf: 80 days

TURIROA 18P425^{PV}

TANGIHAU TOP SHELF L21
TURIROA 13997^V

STERN 10610
TANGIHAU J109
MERCHISTON INFINITY 774
TURIROA 04322

Al'd on the 3/11/23 to MM Rembrandt R48. Cover bulls 15/11/23 to 3/01/24
-Turiroa Toughnut 21S634, Black Ridge Saba R50



MARCH 2024 TRANSTASMAN ANGUS CATTLE EVALUATION

Dir	Dtrs	GL	B/Wt	200 Wt	400 Wt	600 Wt	Mwt	Milk	SS	DC	Cwt	EMA	Rib	Rump	RBY %	IMF%
-2.1	-2.2	-2.7	+4.9	+42	+78	+106	+103	+16	+2.3	-4.5	+51	+5.0	+1.7	+2.6	+0.7	-0.4
52%	42%	61%	74%	70%	71%	75%	69%	54%	62%	34%	60%	58%	62%	62%	57%	59%

The only Turiroa Complete 18P250 daughter up for offer. She has probably thrown more to her dam's side and is a slick, clean fronted heifer with some style about her. Tidy set of data across the page with good EMA and fats once again.

PURCHASER: _____

PRICE: _____



LOT 9
TURIROA 21S730^{PV}



LOT: 9

TURIROA 21S730^{PV}

BORN: 17/08/21
ID No.: 15603121S730

BROOKWOOD P26 (ET)^{SV}

BRAVEHEART OF STERN^{SV}
LYNMAR JEWEL (ET)

HIGHLANDER OF STERN
STERN 3886
TURIHAUA CRUMBLE Y167
WAITERENUI SAGE 530

TURIROA 18P440^{SV}

MATAURI OUTLAW L426
TURIROA AMY 10785^V

MATAURI OUTLIER F031
MATAURI 08849
TURIHAUA BREAK D92
AMY 70 OF TURIROA

JOINING DETAILS:

Date Scanned: 9/02/24
Days in Calf: 100 days

AI'd on the 3/11.23 - Probable outcome Millah Murrah Rembrandt R48 or Turiroa Complete 18P250. Cover bulls 15/11/23 to 03/01/24- Turiroa Toughnut 21S634, Black Ridge Saba R 50



MARCH 2024 TRANSTASMAN ANGUS CATTLE EVALUATION

Dir	Dtrs	GL	B/Wt	200 Wt	400 Wt	600 Wt	Mwt	Milk	SS	DC	Cwt	EMA	Rib	Rump	RBY %	IMF%
-3.9	-6.6	-1.5	+6.7	+42	+79	+105	+101	+13	+1.1	-3.1	+52	+2.4	-0.3	-0.3	+0.7	+0.4
56%	47%	63%	75%	71%	72%	75%	70%	57%	63%	39%	61%	59%	63%	63%	58%	60%

Another very typey P26 daughter who shows herself off well. She has an excellent pedigree with Braveheart and Crumble anchoring that topside. Well worth ticking. Please note, 730's number was not recorded at mating so joining details are a probable outcome.

PURCHASER: _____

PRICE: _____



LOT 10
TURIROA 21S714^{PV}



LOT: 10

TURIROA 21S714^{PV}

BORN: 27/08/21
ID No.: 15603121S714

SHIAN RANGER 18-507^{PV}

MATAURI RANGER L362^{SV}
SHIAN 15-114

MATAURI OUTLANDER J487 (ET)
MATAURI H548
TANGIHAU KAINO H29
SHIAN 540

TURIROA L140

KAYJAY QUATRO H491
TURIROA 11808^V

TE MANIA QUANTUM 09 490
KAYJAY SHIAN 216
CRICKLEWOOD 178
141 OF TURIROA

JOINING DETAILS:

Date Scanned: 9/02/24
Days in Calf: 60 days

AI'd on the 03/11/23 to Turiroa Complete 18P250. Cover bulls 15/11/23 to 03/01/24-Turiroa Toughnut 21S634, Black Ridge Saba R50



MARCH 2024 TRANSTASMAN ANGUS CATTLE EVALUATION

Dir	Dtrs	GL	B/Wt	200 Wt	400 Wt	600 Wt	Mwt	Milk	SS	DC	Cwt	EMA	Rib	Rump	RBY %	IMF%
-4.1	+0.0	-4.1	+6.7	+45	+79	+108	+104	+11	+0.8	-3.4	+50	+2.4	+0.8	+0.9	+0.2	+0.8
48%	38%	53%	74%	70%	71%	75%	69%	53%	55%	31%	60%	56%	60%	60%	54%	55%

Lovely type with a lot of attributes we like to see in our females. She still carries femininity and class but has strength and constitution. Once again she walks well and will be a good asset in any herd.

PURCHASER: _____

PRICE: _____



LOT 11
TURIROA 21S728^{PV}



LOT: 11

TURIROA 21S728^{PV}

BORN: 06/09/21
ID No.: 15603121S728

TURIROA 19Q421^{SV}

TAIMATE LATITUDE L7^{SV}
TURIROA 11874

MATAURI REALITY 839
TAIMATE 1380
STERN 0768
TURIROA 04295

JOINING DETAILS:

Date Scanned: 9/02/24
Days in Calf: 105 days

TURIROA 18P450^{SV}

TURIROA TYRANT 14843
WAITAWHETA G45^V

S CHISUM 6175 (IMP USA)
TURIROA 11853 (ET)
WAITAWHETA B11
WAITAWHETA A56

Al'd on the 3/11/23 to MM Rembrandt R48. Cover bulls 15/11/23 to 3/01/24
-Turiroa Toughnut 21S634, Black Ridge Saba R50



MARCH 2024 TRANSTASMAN ANGUS CATTLE EVALUATION

Dir	Dtrs	GL	B/Wt	200 Wt	400 Wt	600 Wt	Mwt	Milk	SS	DC	Cwt	EMA	Rib	Rump	RBY %	IMF%
+2.5	+0.4	-5.5	+4.9	+42	+76	+100	+91	+13	+2.8	-5.0	+48	+0.5	+3.5	+3.3	-0.5	+1.1
46%	38%	48%	72%	68%	69%	72%	67%	47%	49%	31%	57%	53%	59%	58%	53%	52%

Half sister to the outstanding Lot 2 in this sale. 728 has a wonderful top-line and pulls up well. She walks like a trooper and will develop into a smart matron. Great fats and handy IMF, she will appeal to a number of programs.

PURCHASER: _____

PRICE: _____





Austin's
Ultrasound North

Commercial Beef Farmers

Carcass scan your heifers when selecting your replacements for genetic gains

Contact:

Hugh Boulton

Accredited BreedPlan Scanner No. 1048

M: 027 339 5222

E: hughjboulton@gmail.com

We deliver data at chute side. Electronic Data Entry available

- Rib Fat
- Rump Fat
- EMA
- IMF%

LOT: 12

TURIROA 21S704^{PV}

BORN: 16/08/21
ID No.: 15603121S704

SHIAN RANGER 18-507^{PV}

MATAURI RANGER L362^{SV}
SHIAN 15-114

MATAURI OUTLANDER J487 (ET)
MATAURI H548
TANGIHAU KAINO H29
SHIAN 540

JOINING DETAILS:

Date Scanned: 9/02/24
Days in Calf: 100 days

TURIROA L100

TURIROA 13778
TURIROA 05431^V

CRICKLEWOOD 178
TURIROA 04309
DANDALOO BENZ 021
ABBY 36 OF TURIROA

AI'd on the 03/11/23 to Turiroa Complete 18P250. Cover bulls 15/11/23 to 03/01/24-Turiroa Toughnut 21S634, Black Ridge Saba R50



MARCH 2024 TRANSTASMAN ANGUS CATTLE EVALUATION

Dir	Dtrs	GL	B/Wt	200 Wt	400 Wt	600 Wt	Mwt	Milk	SS	DC	Cwt	EMA	Rib	Rump	RBY %	IMF%
+0.8	+0.9	-4.4	+5.6	+41	+77	+111	+111	+16	+1.3	-2.5	+52	-0.2	-0.8	-1.4	+0.3	+1.0
51%	38%	51%	74%	71%	71%	75%	69%	54%	56%	31%	60%	56%	61%	60%	54%	55%

704 has a little more dimension as her dam L100 is one of our bigger more powerful cows. She will mature into a strong matron like her mother. AI'd to Turiroa Complete 18P250 so will be a fantastic mating if conceived to AI.

PURCHASER: _____

PRICE: _____



LOT 13
TURIROA 21S771^{PV}



LOT: 13

TURIROA 21S771^{PV}

BORN: 18/08/21
ID No.: 15603121S771

OREGON STEAMIN KEITH N90^{SV}

MATAURI SMOKIN JOE K286
OREGON H89

MATAURI RESOLUTION F030
MATAURI F128
KAYJAY 119
OREGON LEA

TURIROA 13974

MERCHISTON INFINITY 774
TURIROA FERN 460^V

TE MANIA INFINITY 04 379
MERCHISTON MARIA 313
UNITY 268 OF ELGIN
107 OF TURIROA

JOINING DETAILS:

Date Scanned: 9/02/24
Days in Calf: 100 days

Al'd on the 3/11/23 to MM Rembrandt R48. Cover bulls 15/11/23 to 3/01/24
-Turiroa Toughnut 21S634, Black Ridge Saba R50



MARCH 2024 TRANSTASMAN ANGUS CATTLE EVALUATION

Dir	Dtrs	GL	B/Wt	200 Wt	400 Wt	600 Wt	Mwt	Milk	SS	DC	Cwt	EMA	Rib	Rump	RBY %	IMF%
-0.8	-2.4	-3.0	+5.9	+46	+83	+112	+95	+14	+2.9	-3.1	+53	+3.7	+0.6	+1.7	+0.8	-0.2
50%	41%	54%	74%	71%	71%	75%	69%	55%	58%	35%	61%	58%	62%	62%	56%	57%

Hard to go past this heifer with her depth and thickness, great top, head and tidy shoulder set. A real cracker that will be an asset to any herd. We rate her!

PURCHASER: _____

PRICE: _____



LOT 14
TURIROA 21S774^{PV}



LOT: 14

TURIROA 21S774^{PV}

BORN: 13/08/21
ID No.: 15603121S774

TAIMATE LATITUDE L7^{SV}

MATAURI REALITY 839
TAIMATE 1380

SCHURRTOP REALITY X723
MATAURI 06663
GOLDWYN 007
TAIMATE 637

TURIROA 14001

TANGIHAU 10 - 100
TURIROA 10801^V

WOODBANK 7147
TANGIHAU 532
KAYJAY SCOTTY 824
103272 OF TURIROA

JOINING DETAILS:

Date Scanned: 9/02/24
Days in Calf: 100 days

Al'd on the 3/11/23 to MM Rembrandt R48. Cover bulls 15/11/23 to 3/01/24
-Turiroa Toughnut 21S634, Black Ridge Saba R50



MARCH 2024 TRANSTASMAN ANGUS CATTLE EVALUATION

Dir	Dtrs	GL	B/Wt	200 Wt	400 Wt	600 Wt	Mwt	Milk	SS	DC	Cwt	EMA	Rib	Rump	RBY %	IMF%
+0.7	+0.9	-2.2	+5.7	+39	+77	+102	+108	+15	+2.7	-4.6	+51	+2.5	+1.9	+2.1	+0.5	+0.3
52%	43%	53%	75%	71%	72%	75%	70%	56%	55%	35%	61%	57%	62%	61%	56%	56%

All the type and class of a top matron here! Walk her around and you will see the quality she possesses. Good fats for the hills.

PURCHASER: _____

PRICE: _____



LOT 15
TURIROA 21S717^{SV}



LOT: 15

TURIROA 21S717^{SV}

BORN: 20/08/21
ID No.: 15603121S717

MERCHISTON TYRANT N217^{SV}

TURIROA TYRANT 14843
MERCHISTON DUCHESS 1031

S CHISUM 6175 (IMP USA)
TURIROA 11853 (ET)
MERCHISTON TIMELINE 942
MERCHISTON DUCHESS 573

TURIROA TERESA 09567

TURIROA CARGO 80
745 OF TURIROA^V

RANGATIRA CAESAR 629
813 OF TURIROA
29194 OF TE MANIA
509 OF TURIROA

JOINING DETAILS:

Date Scanned: 9/02/24
Days in Calf: 70 days

Al'd on the 3/11/23 to MM Rembrandt R48. Cover bulls 15/11/23 to 3/01/24
-Turiroa Toughnut 21S634, Black Ridge Saba R50



MARCH 2024 TRANSTASMAN ANGUS CATTLE EVALUATION

Dir	Dtrs	GL	B/Wt	200 Wt	400 Wt	600 Wt	Mwt	Milk	SS	DC	Cwt	EMA	Rib	Rump	RBY %	IMF%
-6.2	+0.8	-1.1	+7.0	+42	+79	+101	+96	+18	+0.6	-3.5	+54	-0.3	-0.5	-0.7	+0.4	+0.5
53%	43%	59%	75%	72%	72%	76%	70%	61%	62%	33%	62%	57%	62%	61%	56%	57%

Feminine heifer that really covers the ground. Some good old genetics in her pedigree that have stood the test of time.

PURCHASER: _____

PRICE: _____



LOT 16
TURIROA 21S782^{PV}



LOT: 16

TURIROA 21S782^{PV}

BORN: 13/08/21
ID No.: 15603121S782

SHIAN RANGER 18-507^{PV}

MATAURI RANGER L362^{SV}
SHIAN 15-114

MATAURI OUTLANDER J487 (ET)
MATAURI H548
TANGIHAU KAINO H29
SHIAN 540

JOINING DETAILS:

Date Scanned: 9/02/24
Days in Calf: 40 days

TURIROA 16M227ET (ET)^{SV}

RANGATIRA ICEBREAKER 13-59
TURIROA 13961^V

MT MABLE THOR 660
KAHARAU 10-9091
TURIROA BREAKER 10663
TURIROA 10803

Al'd on the 3/11/23 to MM Rembrandt R48. Cover bulls 15/11/23 to 3/01/24
-Turiroa Toughnut 21S634, Black Ridge Saba R50



MARCH 2024 TRANSTASMAN ANGUS CATTLE EVALUATION

Dir	Dtrs	GL	B/Wt	200 Wt	400 Wt	600 Wt	Mwt	Milk	SS	DC	Cwt	EMA	Rib	Rump	RBY %	IMF%
-6.1	-1.6	-3.6	+6.9	+44	+81	+105	+100	+14	+1.4	-3.7	+49	+0.6	-0.1	-0.4	+0.5	+0.1
51%	40%	57%	74%	71%	71%	75%	70%	55%	58%	33%	61%	57%	62%	61%	56%	56%

The Ranger heifers are real standouts and this one is no exception. Ranger has bred so consistently for us with his sons also being standouts at our record breaking sale last year. 782 also has a strong East Coast pedigree on her dam's side.

PURCHASER: _____

PRICE: _____



LOT 17
TURIROA 21S709^{SV}



LOT: 17

TURIROA 21S709^{SV}

BORN: 13/08/21
ID No.: 15603121S709

TANGIHAU TOP SHELF L21

STERN 10610
TANGIHAU J109

BRAVEHEART OF STERN^{SV}
STERN 1553
STERN 10610
TANGIHAU 010

TURIROA 12928

STERN 09400
TURIROA 04299^V

HIGHLANDER OF STERN
STERN 4132
KAHARAU BONZA 39 (ET)
HOLLY OF TURIROA

JOINING DETAILS:

Date Scanned: 9/02/24
Days in Calf: 100 days

Al'd on the 3/11/23 to MM Rembrandt R48. Cover bulls 15/11/23 to 3/01/24
-Turiroa Toughnut 21S634, Black Ridge Saba R50



MARCH 2024 TRANSTASMAN ANGUS CATTLE EVALUATION

Dir	Dtrs	GL	B/Wt	200 Wt	400 Wt	600 Wt	Mwt	Milk	SS	DC	Cwt	EMA	Rib	Rump	RBY %	IMF%
-0.2	+0.7	-4.5	+4.4	+38	+71	+104	+113	+14	+1.8	-2.8	+48	+0.9	+1.1	+1.1	+0.3	+0.4
50%	40%	56%	75%	72%	72%	76%	71%	59%	58%	34%	62%	58%	62%	62%	57%	56%

By Top Shelf who did a good job for us. Some solid old bloodlines in the mix here. Mated correctly she should leave some exciting progeny.

PURCHASER: _____

PRICE: _____



LOT 18
TURIROA 21S736



LOT: 18

TURIROA 21S736

BORN: 11/08/21
ID No.: 15603121S736

BROOKWOOD P26 (ET)^{SV}

BRAVEHEART OF STERN^{SV}
LYNMAR JEWEL (ET)

HIGHLANDER OF STERN
STERN 3886
TURIHAUA CRUMBLE Y167
WAITERENUI SAGE 530

TURIROA 18P384^{PV}

TAIMATE LATITUDE L7^{SV}
TURIROA 131007^V

MATAURI REALITY 839
TAIMATE 1380
TURIROA RUMBLE 11540 (ET)
TURIROA TERESA 09567

JOINING DETAILS:

Date Scanned: 9/02/24
Days in Calf: 80 days

Al'd on the 3/11/23 to MM Rembrandt R48. Cover bulls 15/11/23 to 3/01/24
-Turiroa Toughnut 21S634, Black Ridge Saba R50



MARCH 2024 TRANSTASMAN ANGUS CATTLE EVALUATION

Dir	Dtrs	GL	B/Wt	200 Wt	400 Wt	600 Wt	Mwt	Milk	SS	DC	Cwt	EMA	Rib	Rump	RBY %	IMF%
+0.3	-2.6	-2.8	+5.6	+39	+73	+97	+84	+14	+1.6	-4.3	+47	+3.6	+0.9	+2.2	+0.5	+0.5
56%	47%	63%	74%	70%	71%	69%	66%	57%	63%	39%	59%	58%	60%	60%	55%	60%

Strong pedigree with some NZ favorites in behind her. This will add to her predictability in breeding top class off-spring.

PURCHASER: _____

PRICE: _____



LOT 19
TURIROA 21S700^{SV}



LOT: 19

TURIROA 21S700^{SV}

BORN: 06/08/21
ID No.: 15603121S700

SHIAN RANGER 18-507^{PV}

MATAURI RANGER L362^{SV}
SHIAN 15-114

MATAURI OUTLANDER J487 (ET)
MATAURI H548
TANGIHAU KAINO H29
SHIAN 540

TURIROA 12904

STERN 0768
TURIROA 07532^V

0490 OF KAKAHU
STERN 1531
TURIROA 005288
F834 OF TURIROA

JOINING DETAILS:

Date Scanned: 9/02/24
Days in Calf: 60 days

Al'd on the 3/11/23 to MM Rembrandt R48. Cover bulls 15/11/23 to 3/01/24
-Turiroa Toughnut 21S634, Black Ridge Saba R50



MARCH 2024 TRANSTASMAN ANGUS CATTLE EVALUATION

Dir	Dtrs	GL	B/Wt	200 Wt	400 Wt	600 Wt	Mwt	Milk	SS	DC	Cwt	EMA	Rib	Rump	RBY %	IMF%
-2.7	-0.4	-4.5	+6.3	+42	+79	+109	+111	+13	+1.1	-3.5	+46	+2.2	+0.7	+0.3	+0.4	+0.8
53%	42%	59%	75%	72%	72%	76%	70%	58%	61%	34%	62%	59%	63%	63%	57%	58%

Really smart heifer here. She is out of our prolific donor 904 who left three stud bulls and had 27 calves by way of ET and natural mating. Most noticeably Turiroa Maverick L945 who was sold to Rangatira and bred so well for them leaving a number of stud sires. Hard to go past this girl!

PURCHASER: _____

PRICE: _____



LOT 20
TURIROA 21S695^{PV}



LOT: 20

TURIROA 21S695^{PV}

BORN: 14/08/21
ID No.: 15603121S695

SHIAN RANGER 18-507^{PV}

MATAURI RANGER L362^{SV}
SHIAN 15-114

MATAURI OUTLANDER J487 (ET)
MATAURI H548
TANGIHAU KAINO H29
SHIAN 540

TURIROA 16M251^{SV}

KAYJAY QUATRO H491
TURIROA 108603^V

TE MANIA QUANTUM 09 490
KAYJAY SHIAN 216
564 OF IONA
103276 OF TURIROA

JOINING DETAILS:

Date Scanned: 9/02/24
Days in Calf: 65 days

Al'd on the 3/11/23 to MM Rembrandt R48. Cover bulls 15/11/23 to 3/01/24
-Turiroa Toughnut 21S634, Black Ridge Saba R50



MARCH 2024 TRANSTASMAN ANGUS CATTLE EVALUATION

Dir	Dtrs	GL	B/Wt	200 Wt	400 Wt	600 Wt	Mwt	Milk	SS	DC	Cwt	EMA	Rib	Rump	RBY %	IMF%
-0.6	+0.6	-5.4	+5.1	+42	+79	+105	+98	+14	+1.1	-2.5	+50	+0.3	+0.2	+0.3	-0.1	+1.4
47%	37%	51%	73%	70%	70%	74%	69%	52%	52%	30%	59%	54%	59%	59%	53%	53%

Last of the Ranger heifers to be sold and they have been very consistent. Another good quality heifer that catches the eye.

PURCHASER: _____

PRICE: _____



LOT 21
TURIROA 21S703^{PV}



LOT: 21

TURIROA 21S703^{PV}

BORN: 16/08/21
ID No.: 15603121S703

MERCHISTON TYRANT N217^{SV}

TURIROA TYRANT 14843
MERCHISTON DUCHESS 1031

S CHISUM 6175 (IMP USA)
TURIROA 11853 (ET)
MERCHISTON TIMELINE 942
MERCHISTON DUCHESS 573

TURIROA 16M231^{SV}

CRICKLEWOOD H60
TURIROA FAITH 09668 (ET)^V

TE MANIA 09 492
WAITERENUI MAID E161
WAIHOHONU 113
TURIROA FAITH 471

JOINING DETAILS:

Date Scanned: 9/02/24
Days in Calf: 50 days

AI'd on the 03/11/23 to Turiroa Complete 18P250. Cover bulls 15/11/23 to 03/01/24-Turiroa Toughnut 21S634, Black Ridge Saba R50



MARCH 2024 TRANSTASMAN ANGUS CATTLE EVALUATION

Dir	Dtrs	GL	B/Wt	200 Wt	400 Wt	600 Wt	Mwt	Milk	SS	DC	Cwt	EMA	Rib	Rump	RBY %	IMF%
+1.9	+3.1	-3.3	+4.5	+38	+72	+89	+90	+21	+1.4	-3.8	+46	-1.2	-0.4	-0.9	+0.3	+0.9
54%	43%	62%	72%	69%	68%	71%	67%	59%	63%	34%	58%	56%	58%	58%	53%	60%

Some older genetics here. Her Grandam Faith 668 10 calves in 10 years by Waihohonu 113 who bred so well for Kaharau. A worthy heifer that could well breed a cracker to the right bull.

PURCHASER: _____

PRICE: _____





FARMVETS

Guaranteed effective animal health advice.

EAST COAST  **06 868 8616**

349 Childers Road, Gisborne

PROUD SUPPORTERS OF

TURIROA ANGUS

WAIROA  **06 838 3832**

77-79 Queen Street, Wairoa
(At the old Wairoa Star Building)

LOT: 22

TURIROA 21S740^{PV}

BORN: 21/09/21
ID No.: 15603121S740

TURIROA PRINCE 18P240 (ET)^{SV}

GOLDWYN H817^{SV}
TURIROA L120 (ET)

S CHISUM 6175 (IMP USA)
GOLDWYN 512
TURIHAUA CRUMP E5 (ET)^{SV}
TURIROA 12904

JOINING DETAILS:

Date Scanned: 9/02/24
Days in Calf: 85 days

TURIROA 16M194^{SV}

KAHARAU 11-864
TURIROA 04309^V

KAHARAU LANCER 699
KAHARAU 07-8032
KAHARAU BONZA 39 (ET)
F830 OF TURIROA

Al'd on the 3/11/23 to MM Rembrandt R48. Cover bulls 15/11/23 to 3/01/24
-Turiroa Toughnut 21S634, Black Ridge Saba R50



MARCH 2024 TRANSTASMAN ANGUS CATTLE EVALUATION

Dir	Dtrs	GL	B/Wt	200 Wt	400 Wt	600 Wt	Mwt	Milk	SS	DC	Cwt	EMA	Rib	Rump	RBY %	IMF%
-1.9	-0.1	-2.3	+5.3	+38	+74	+91	+83	+14	+1.9	-3.6	+42	+1.8	-0.1	-0.5	+1.1	-0.1
53%	43%	60%	75%	71%	72%	75%	70%	58%	61%	36%	61%	58%	62%	62%	57%	58%

Some great sires in behind this heifer. Prince 240 is a full flush brother to Panther sold to Meadowslea and is doing a great job down there. You also have Goldwyn 817, Crump, Lancer and Bonza all in the mix.

PURCHASER: _____

PRICE: _____



LOT 23
TURIROA 22T835^{PV}



LOT: 23**TURIROA 22T835^{PV}****BORN: 13/08/22
ID No.: 15603122T835**KAHARAU FURNACE Q308^{SV}KAHARAU ATLANTIC 454^{SV}
KAHARAU 1076KAHARAU ATLAS 12-75
KAHARAU 12-9498
KAHARAU SAMSON 11-714
KAHARAU 12-9438

TURIROA L098

MERCHISTON INFINITY 774
TURIROA 05439^VTE MANIA INFINITY 04 379
MERCHISTON MARIA 313
DANDALOO BENZ 021
778 OF TURIROA**MARCH 2024 TRANSTASMAN ANGUS CATTLE EVALUATION**

Dir	Dtrs	GL	B/Wt	200 Wt	400 Wt	600 Wt	Mwt	Milk	SS	DC	Cwt	EMA	Rib	Rump	RBY %	IMF%
-2.0	-1.6	-3.5	+5.2	+39	+69	+96	+100	+15	-0.7	-2.7	+39	+6.6	+1.8	+1.0	+0.5	+2.7
63%	51%	80%	81%	82%	80%	80%	76%	71%	77%	40%	68%	67%	68%	68%	60%	72%

First of the genomic tested 22 born heifers and an absolute cracker! 835 is an outstanding young matron with size, length and depth. She has an excellent spread of EBV's in the carcass department with huge EMA, fats and top 10% of the breed for IMF! Her dam L098 has been a donor and is the dam of Lot 3 at last years record breaking Bull Sale. Turiroa retains the right to flush 835 on farm after this sale. She will then be transported to her owner, Turiroa to pay the transport costs on this heifer.

PURCHASER: _____**PRICE:** _____

LOT 24
TURIROA 22T833^{PV}



LOT: 24

TURIROA 22T833^{PV}

BORN: 21/08/22
ID No.: 15603122T833

BLACK RIDGE SABA R50^{PV}

TE MANIA BUFF 16314^{SV}
BLACK RIDGE P121^{SV}

MATAURI REALITY 839
TE MANIA 14129
MATAURI NAVIGATOR L428
BLACK RIDGE 653

TURIROA 17N328^{SV}

KAHARAU 11-864
TURIROA 11871^V

KAHARAU LANCER 699
KAHARAU 07-8032
STERN 0768
TURIROA HOPE 475



MARCH 2024 TRANSTASMAN ANGUS CATTLE EVALUATION

Dir	Dtrs	GL	B/Wt	200 Wt	400 Wt	600 Wt	Mwt	Milk	SS	DC	Cwt	EMA	Rib	Rump	RBV %	IMF%
+0.1	+0.4	-1.2	+5.7	+46	+91	+123	+127	+19	+3.2	-3.8	+61	+2.7	+1.8	+0.8	+0.1	+0.4
61%	50%	80%	81%	81%	79%	80%	76%	70%	77%	37%	67%	66%	66%	67%	58%	71%

First of the Saba daughters and a lovely well balanced heifer she is. Good top line, style and that natural softness we like to see. Her dam 17N328 is the dam of lot 5 at our record breaking 2023 sale. 833 has a tidy spread of data across the page.

PURCHASER: _____

PRICE: _____

LOT 25
TURIROA 22T822 (ET) ^{PV}



LOT: 25

TURIROA 22T822 (ET)^{PV}

BORN: 16/09/22
ID No.: 15603122T822

MILLAH MURRAH PARATROOPER P15^{PV}

EF COMMANDO 1366
MILLAH MURRAH ELA M9

EF COMPLEMENT 8088
RIVERBEND YOUNG LUCY W1470
MILLAH MURRAH HIGHLANDER G18
MILLAH MURRAH ELA K127



TURIROA 16M261^{SV}

KAHARAU 11-864
TURIROA 10763^V

KAHARAU LANCER 699
KAHARAU 07-8032
STERN 0768
103256 OF TURIROA



MARCH 2024 TRANSTASMAN ANGUS CATTLE EVALUATION

Dir	Dtrs	GL	B/Wt	200 Wt	400 Wt	600 Wt	Mwt	Milk	SS	DC	Cwt	EMA	Rib	Rump	RBV %	IMF%
+3.5	-3.2	-3.8	+4.5	+56	+106	+133	+106	+21	+2.8	-3.1	+81	+5.0	-4.0	-4.0	+0.4	+3.3
69%	59%	82%	82%	83%	81%	81%	78%	74%	79%	42%	71%	70%	70%	71%	63%	74%

Could be the first Paratrooper daughter to hit the market in NZ! An ET heifer with moderate birth, a ton of growth, CW, EMA and IMF in the top 5% of the bred in NZ. 822 is a typey heifer with a good loin and hindquarter.

PURCHASER: _____

PRICE: _____

LOT 26
TURIROA 22T805^{PV}



LOT: 26

TURIROA 22T805^{PV}

BORN: 07/08/22
ID No.: 15603122T805

MILLAH MURRAH PARATROOPER P15^{PV}

EF COMMANDO 1366
MILLAH MURRAH ELA M9

EF COMPLEMENT 8088
RIVERBEND YOUNG LUCY W1470
MILLAH MURRAH HIGHLANDER G18
MILLAH MURRAH ELA K127

TURIROA 19Q540^{SV}

TAIMATE LATITUDE L7^{SV}
GOLDWYN H617^V

MATAURI REALITY 839
TAIMATE 1380
S CHISUM 6175 (IMP USA)
WAITOMO 64



MARCH 2024 TRANSTASMAN ANGUS CATTLE EVALUATION

Dir	Dtrs	GL	B/Wt	200 Wt	400 Wt	600 Wt	Mwt	Milk	SS	DC	Cwt	EMA	Rib	Rump	RBY %	IMF%
+0.7	+4.1	-6.1	+5.1	+56	+98	+125	+113	+13	+2.8	-3.8	+76	+4.0	+0.0	-0.3	+0.5	+1.1
62%	53%	66%	74%	71%	72%	75%	71%	61%	64%	38%	62%	60%	64%	64%	59%	62%

Unfortunately 805's DNA failed twice and the third round will not be ready at sale time, therefore she is not HD50k tested at this stage. Another Paratrooper daughter with a very solid pedigree here! She also has a good spread of data across the page. Her dam 19Q540 is a very thick, rotund cow who we rate highly.

PURCHASER: _____

PRICE: _____

The Science of Selection

NZ's trusted sheep & beef DNA experts.



NZ Beef: Amy Hoogenboom 021 199 0989 | NZ Sheep: Dayanne Almeida 027 208 5501

zoetis

LOT: 27

TURIROA 22T793^{PV}

BORN: 15/09/22
ID No.: 15603122T793

KAHARAU FURNACE Q308^{SV}

KAHARAU ATLANTIC 454^{SV}
KAHARAU 1076

KAHARAU ATLAS 12-75
KAHARAU 12-9498
KAHARAU SAMSON 11-714
KAHARAU 12-9438

TURIROA 18P420^{PV}

TURIROA TYRANT 14843
TURIROA 131009^V

S CHISUM 6175 (IMP USA)
TURIROA 11853 (ET)
TURIROA BLACKHEART 10658 (ET)
TURIROA 10802



MARCH 2024 TRANSTASMAN ANGUS CATTLE EVALUATION

Dir	Dtrs	GL	B/Wt	200 Wt	400 Wt	600 Wt	Mwt	Milk	SS	DC	Cwt	EMA	Rib	Rump	RBY %	IMF%
+3.7	+5.1	-3.9	+3.2	+43	+80	+98	+64	+16	+2.0	-3.7	+57	+7.4	+3.8	+4.7	-0.2	+1.7
61%	48%	79%	81%	81%	79%	80%	76%	69%	76%	37%	67%	66%	67%	68%	59%	71%

A twin (has a sister) and a maternal 1/2 sister to lot 2 in this sale. Another smart heifer by Furnace and once again a great pedigree to back her up. An excellent data set across the page as well. Dam 18P420 is on the short list for ET. She is a tank of a cow! A traditional pedigree with modern day data! Potential here.

PURCHASER: _____

PRICE: _____

LOT 28
TURIROA 22T866^{PV}



LOT: 28

TURIROA 22T866^{PV}

BORN: 01/09/22
ID No.: 15603122T866

TAIMATE LATITUDE L7^{SV}

MATAURI REALITY 839
TAIMATE 1380

SCHURRTOP REALITY X723
MATAURI 06663
GOLDWYN 007
TAIMATE 637

TURIROA 17N316 (ET)^{PV}

ATAHUA FREEDOM 609-10
TURIROA 14019^V

BRAVEHEART OF STERN^{SV}
ATAHUA ALICE 285-05
S CHISUM 6175 (IMP USA)
TURIROA 11828



MARCH 2024 TRANSTASMAN ANGUS CATTLE EVALUATION

Dir	Dtrs	GL	B/Wt	200 Wt	400 Wt	600 Wt	Mwt	Milk	SS	DC	Cwt	EMA	Rib	Rump	RBY %	IMF%
+0.6	+0.6	-4.9	+6.0	+52	+96	+124	+112	+13	+3.3	-2.5	+70	+6.5	+0.2	+0.6	+0.7	+0.6
54%	45%	63%	68%	69%	70%	73%	68%	58%	63%	36%	60%	57%	61%	61%	56%	60%

I really rate this heifer's pedigree. When you combine Reality, Braveheart and S Chisum you can guarantee it will work. This cross has served us very well for a number of years. 866 has a very solid data set and a nice phenotype to go with it. Very hard to get all three in the one article- pedigree, EBV's and phenotype but she has it. Should be a three ticker.

PURCHASER: _____

PRICE: _____

LOT 29
TURIROA 22T858^{PV}



LOT: 29

TURIROA 22T858^{PV}

BORN: 23/08/22
ID No.: 15603122T858

ATAHUA TOUGHNUT 378-18^{PV}

TE MANIA 15380
ATAHUA QUEST 231-14

MATAURI REALITY 839
TE MANIA 13175
ATAHUA 831
ATAHUA QUEST 863

TURIROA 18P441^{SV}

MATAURI OUTLAW L426
TURIROA 10775^V

MATAURI OUTLIER F031
MATAURI 08849
KAHARAU 649
TURIROA 05403



MARCH 2024 TRANSTASMAN ANGUS CATTLE EVALUATION

Dir	Dtrs	GL	B/Wt	200 Wt	400 Wt	600 Wt	Mwt	Milk	SS	DC	Cwt	EMA	Rib	Rump	RBY %	IMF%
-7.6	-9.3	-2.5	+8.3	+64	+112	+146	+146	+9	+2.0	-1.7	+87	+0.7	+0.7	+1.7	-0.1	+0.1
61%	50%	79%	81%	81%	79%	80%	76%	69%	76%	38%	67%	66%	66%	67%	58%	71%

Toughnut daughter that has length and carries herself well. Plenty of growth, CW, good fats and a pedigree that will suit a number of bloodlines come mating time.

PURCHASER: _____

PRICE: _____

LOT 30
TURIROA 22T848^{PV}



LOT: 30

TURIROA 22T848^{PV}

BORN: 25/08/22
ID No.: 15603122T848

ATAHUA TOUGHNUT 378-18^{PV}

TE MANIA 15380
ATAHUA QUEST 231-14

MATAURI REALITY 839
TE MANIA 13175
ATAHUA 831
ATAHUA QUEST 863

TURIROA 17N326^{SV}

KAHARAU 11-864
TURIROA 108637^V

KAHARAU LANCER 699
KAHARAU 07-8032
TURIROA 06377
TURIROA 04366



MARCH 2024 TRANSTASMAN ANGUS CATTLE EVALUATION

Dir	Dtrs	GL	B/Wt	200 Wt	400 Wt	600 Wt	Mwt	Milk	SS	DC	Cwt	EMA	Rib	Rump	RBY %	IMF%
-11.8	-5.2	-0.3	+8.8	+56	+97	+125	+112	+16	+3.4	-1.9	+66	+1.8	-0.4	-1.7	+0.1	+0.5
61%	50%	79%	81%	81%	79%	80%	76%	70%	76%	38%	67%	66%	67%	67%	59%	70%

Strong heifer with genuine width behind and over the loin. She has length and some x factor about her. Has to be one of the best phenotypically as she always catches the eye.

PURCHASER: _____

PRICE: _____

LOT 31
TURIROA 22T831^{PV}



LOT: 31

TURIROA 22T831^{PV}

BORN: 10/08/22
ID No.: 15603122T831

KAHARAU FURNACE Q308^{SV}

KAHARAU ATLANTIC 454^{SV}
KAHARAU 1076

KAHARAU ATLAS 12-75
KAHARAU 12-9498
KAHARAU SAMSON 11-714
KAHARAU 12-9438



TURIROA 13981

TURIROA RUMBLE 11540 (ET)
TURIROA TARTAN 09684^V

BRAVEHEART OF STERN^{SV}
TURIROA 108601
KAHARAU PRESIDENT 06-432
730 OF TURIROA



MARCH 2024 TRANSTASMAN ANGUS CATTLE EVALUATION

Dir	Dtrs	GL	B/Wt	200 Wt	400 Wt	600 Wt	Mwt	Milk	SS	DC	Cwt	EMA	Rib	Rump	RBV %	IMF%
-2.9	-3.2	-3.3	+5.9	+40	+67	+82	+83	+7	+0.4	-2.9	+41	+4.6	+0.8	+1.7	+0.5	+0.0
63%	51%	80%	81%	82%	80%	80%	76%	71%	77%	39%	68%	67%	67%	68%	60%	72%

Rock solid heifer. Rock solid pedigree! Full of good old NZ blood and a handy data set as well. Lovely heifer in the flesh. She oozes style and broodiness. An opportunity here for someone to secure a foundation female.

PURCHASER: _____

PRICE: _____



LIVESTOCK & AGRIBUSINESS CONSULTANTS

GISBORNE:

Rob Fergus 027 4496007
Deano Brensell 027 8638923
Luke Bates 027 4211653
Jack Twigley 027 2015277

WAIROA:

Daryl Fergus 027 2092787
Ross Mitchell 027 4048965

ENVIRONMENTAL SOLUTIONS CONSULTANT:

Tim Petro 027 3390400

OFFICE:

admin@fergusrural.co.nz

www.fergusrural.co.nz



L to R: Ross Mitchell, Deano Brensell, Luke Bates, Jack Twigley, Daryl Fergus, Tim Petro and Rob Fergus.

LOT: 32

TURIROA 22T832^{PV}

BORN: 09/08/22
ID No.: 15603122T832

KAHARAU FURNACE Q308^{SV}

KAHARAU ATLANTIC 454^{SV}
KAHARAU 1076

KAHARAU ATLAS 12-75
KAHARAU 12-9498
KAHARAU SAMSON 11-714
KAHARAU 12-9438



TURIROA L172

MERCHISTON INFINITY 774
TURIROA 11813^V

TE MANIA INFINITY 04 379
MERCHISTON MARIA 313
CRICKLEWOOD 178
TURIROA 05425



MARCH 2024 TRANSTASMAN ANGUS CATTLE EVALUATION

Dir	Dtrs	GL	B/Wt	200 Wt	400 Wt	600 Wt	Mwt	Milk	SS	DC	Cwt	EMA	Rib	Rump	RBV %	IMF%
+1.8	-1.1	-2.3	+4.5	+39	+71	+91	+108	+9	+1.8	-2.6	+47	+2.8	-1.3	-1.7	+1.2	+0.2
63%	52%	80%	81%	82%	80%	80%	76%	71%	77%	40%	69%	68%	68%	69%	60%	73%

Anther very appealing Furnace daughter. Strong without being coarse and a very easy way about her. Furnace will be well represented at our Bull Sale in June.

PURCHASER: _____

PRICE: _____

LOT 33
TURIROA 22T852^{PV}



LOT: 33

TURIROA 22T852^{PV}

BORN: 12/08/22
ID No.: 15603122T852

TURIROA PRINCE 18P240 (ET)^{SV}

GOLDWYN H817^{SV}
TURIROA L120 (ET)

S CHISUM 6175 (IMP USA)
GOLDWYN 512
TURIHAUA CRUMP E5 (ET)^{SV}
TURIROA 12904

TURIROA 14050

MERCHISTON OUTLOOK 179
OTOKA AILSA 629^V

MERCHISTON VISION 564
MERCHISTON KAY 387
TURIHAUA JIM X3
OTOKA AILSA 444



MARCH 2024 TRANSTASMAN ANGUS CATTLE EVALUATION

Dir	Dtrs	GL	B/Wt	200 Wt	400 Wt	600 Wt	Mwt	Milk	SS	DC	Cwt	EMA	Rib	Rump	RBV %	IMF%
-14.0	-3.1	-2.2	+7.7	+47	+83	+112	+141	+12	+1.7	-4.4	+49	+3.5	-2.5	-3.0	+1.5	+0.1
62%	51%	79%	81%	81%	80%	80%	75%	70%	77%	40%	68%	67%	67%	68%	60%	71%

Good Prince daughter here! You will notice all these heifers are great walkers which means good shoulders. Walking ability is crucial in hill country environments and something we have always paid attention to.

PURCHASER: _____

PRICE: _____

LOT 34
TURIROA 22T830^{SV}



LOT: 34

TURIROA 22T830^{SV}

BORN: 15/08/22
ID No.: 15603122T830

KAHARAU FURNACE Q308^{SV}

KAHARAU ATLANTIC 454^{SV}
KAHARAU 1076

KAHARAU ATLAS 12-75
KAHARAU 12-9498
KAHARAU SAMSON 11-714
KAHARAU 12-9438

TURIROA 11808

CRICKLEWOOD 178
141 OF TURIROA^V

TURIROA EMPEROR 04227
CRICKLEWOOD 703
851 OF TURIROA
F830 OF TURIROA



MARCH 2024 TRANSTASMAN ANGUS CATTLE EVALUATION

Dir	Dtrs	GL	B/Wt	200 Wt	400 Wt	600 Wt	Mwt	Milk	SS	DC	Cwt	EMA	Rib	Rump	RBV %	IMF%
-7.3	-0.1	-3.9	+7.2	+35	+61	+66	+75	+3	+0.7	-4.5	+23	-0.3	+2.5	+2.9	+0.8	-1.5
63%	51%	80%	82%	82%	80%	81%	76%	72%	78%	39%	69%	67%	68%	69%	60%	72%

Furnace daughter again that has a lot of good in her. Fats for the hills and a nice moderate frame. Should develop into a robust cow.

PURCHASER: _____

PRICE: _____

LOT 35
TURIROA 22T790^{PV}



LOT: 35

TURIROA 22T790^{PV}

BORN: 12/08/22
ID No.: 15603122T790

ATAHUA TOUGHNUT 378-18^{PV}

TE MANIA 15380
ATAHUA QUEST 231-14

MATAURI REALITY 839
TE MANIA 13175
ATAHUA 831
ATAHUA QUEST 863

TURIROA 17N289^{PV}

TARANGOWER 15003
TURIROA 13967^V

TURIROA RAMBLE 11541 (ET)
TARANGOWER 708
MERCHISTON INFINITY 774
TURIROA TYKE 09685



MARCH 2024 TRANSTASMAN ANGUS CATTLE EVALUATION

Dir	Dtrs	GL	B/Wt	200 Wt	400 Wt	600 Wt	Mwt	Milk	SS	DC	Cwt	EMA	Rib	Rump	RBV %	IMF%
+6.0	-0.2	-8.5	+5.4	+46	+86	+116	+101	+11	+1.7	-3.4	+64	+1.9	-0.4	+1.3	+0.5	+0.2
59%	49%	78%	80%	80%	78%	79%	75%	69%	76%	37%	66%	65%	66%	67%	58%	69%

A moderate framed, sturdy, go - anywhere heifer. She has good growth EBV's , heavy CW and some fat to go with it. Will end up a very rotund cow. A twin (sister).

PURCHASER: _____

PRICE: _____

LOT 36
TURIROA 22T861^{SV}



LOT: 36

TURIROA 22T861^{SV}

BORN: 21/09/22
ID No.: 15603122T861

ATAHUA TOUGHNUT 378-18^{PV}

TE MANIA 15380
ATAHUA QUEST 231-14

MATAURI REALITY 839
TE MANIA 13175
ATAHUA 831
ATAHUA QUEST 863

TURIROA 17N308 (ET)

RANGATIRA ICEBREAKER 13-59
TURIROA 13961^V

MT MABLE THOR 660
KAHARAU 10-9091
TURIROA BREAKER 10663
TURIROA 10803



MARCH 2024 TRANSTASMAN ANGUS CATTLE EVALUATION

Dir	Dtrs	GL	B/Wt	200 Wt	400 Wt	600 Wt	Mwt	Milk	SS	DC	Cwt	EMA	Rib	Rump	RBV %	IMF%
-3.8	-2.5	-3.8	+6.8	+53	+93	+118	+108	+9	+2.9	-3.0	+65	+5.0	+0.1	+0.0	+0.4	+0.9
54%	44%	63%	74%	71%	71%	74%	68%	58%	63%	34%	60%	57%	61%	61%	56%	59%

Another good Toughnut daughter. Toughnut has left some impressive daughters here and crossed well over our more traditional females. Well worth a second look.

PURCHASER: _____

PRICE: _____

LOT 37
TURIROA 22T796^{PV}



LOT: 37

TURIROA 22T796^{PV}

BORN: 05/09/22
ID No.: 15603122T796

TAIMATE LATITUDE L7^{SV}

MATAURI REALITY 839
TAIMATE 1380

SCHURRTOP REALITY X723
MATAURI 06663
GOLDWYN 007
TAIMATE 637

TURIROA 17N278^{PV}

TANGIHAU KAINO H29
TURIROA 14043 (ET)^V

TE MANIA 09 624
TANGIHAU 10 - 85
BRAVEHEART OF STERN^{SV}
TURIROA 05425



MARCH 2024 TRANSTASMAN ANGUS CATTLE EVALUATION

Dir	Dtrs	GL	B/Wt	200 Wt	400 Wt	600 Wt	Mwt	Milk	SS	DC	Cwt	EMA	Rib	Rump	RBV %	IMF%
+0.3	+0.1	-3.5	+5.2	+32	+58	+87	+69	+15	+2.5	-6.1	+43	+4.3	+2.3	+2.7	+0.6	+0.7
64%	54%	80%	81%	82%	80%	81%	77%	72%	77%	43%	69%	68%	69%	69%	61%	72%

A real character, this latitude daughter. She just cruises and never gets fazed by much. Great pedigree full of old favorites. On paper it pretty much reflects her. Moderate growth, some EMA, good fats. A tidy heifer in every respect.

PURCHASER: _____

PRICE: _____



0800 429 5388 / hazlett.nz

Insurance

Livestock

Agronomy

Funding &
Procurement

We are a business built on the belief that people come first

Our commitment to you is to provide quality advice and to optimise value for you at every opportunity.
Give us a call and we'll prove it.

› Angus Hazlett - 027 462 0136
› Rowan Sandford - 027 215 3215

› Chris Johnston - 027 421 3197
› Richard Johnston - 027 444 3511

› Duke Loe - 021 363 755
› Tom Mowat - 027 462 0190



Hazlett
People Together

LOT: 38

TURIROA 22T804^{PV}

BORN: 24/09/22
ID No.: 15603122T804

KAYJAY LASER R442 (ET)^{SV}

TAIMATE LASER N 22^{PV}
KAYJAY PEONY K117

TAIMATE LAZARUS L12^{PV}
TAIMATE 1434^{SV}
WAITANGI E222
KAYJAY PEONY 795

TURIROA 19Q553^{SV}

TURIROA TYRANT 14843
TURIROA TOOTSIE 09669^V

S CHISUM 6175 (IMP USA)
TURIROA 11853 (ET)
16/06 OF MANGARATA
B1251 OF KENHARDT



MARCH 2024 TRANSTASMAN ANGUS CATTLE EVALUATION

Dir	Dtrs	GL	B/Wt	200 Wt	400 Wt	600 Wt	Mwt	Milk	SS	DC	Cwt	EMA	Rib	Rump	RBV %	IMF%
+3.7	+2.3	-2.8	+3.5	+36	+61	+75	+35	+15	+2.7	-5.4	+25	+2.2	+3.2	+3.1	-0.4	+2.8
60%	50%	79%	80%	81%	79%	79%	75%	69%	76%	37%	66%	65%	66%	67%	58%	70%

By the KayJay yearling we bought. Moderate heifer, great type. Super tidy in every respect. Massive fats and IMF. Maternal plus!

PURCHASER: _____

PRICE: _____

Carrfields




COVERING YOUR
STUD STOCK NEEDS
NATIONWIDE

CONTACT
OUR LOCAL TEAM
TO DISCUSS YOUR
LIVESTOCK NEEDS

Glen Forrest
Livestock Agent
021 228 2535

Neville Clark
Auctioneer
027 598 6537

Simon Lourie
Livestock Agent
027 652 7100

 CARRFIELDSLIVESTOCK.CO.NZ

LOT: 39

TURIROA 22T879^{SV}

BORN: 05/09/22
ID No.: 15603122T879

RANGATIRA 19-784^{SV}

TURIROA MAVERICK L945 (ET)
RANGATIRA 161087

TURIHAUA CRUMP E5 (ET)^{SV}
TURIROA 12904
RANGATIRA 13-94
KAHARAU 05-7589

TURIROA 12918

KAHARAU 09-127
TURIROA 108609^V

KAHUITARA CAVALIER 815
RANGATIRA BEAUTY 578
TURIROA 06377
TURIROA 104324



MARCH 2024 TRANSTASMAN ANGUS CATTLE EVALUATION

Dir	Dtrs	GL	B/Wt	200 Wt	400 Wt	600 Wt	Mwt	Milk	SS	DC	Cwt	EMA	Rib	Rump	RBV %	IMF%
-3.6	-2.0	-3.6	+7.5	+36	+71	+98	+109	+14	+2.4	-3.3	+29	-1.6	+0.4	+0.9	+0.0	+0.7
60%	49%	79%	81%	81%	79%	80%	75%	70%	76%	37%	67%	65%	66%	67%	58%	71%

This heifer has really come on in the last while. Should keep developing well.

PURCHASER: _____

PRICE: _____

LOT 40
TURIROA 22T798^{PV}



LOT: 40

TURIROA 22T798^{PV}

BORN: 16/08/22
ID No.: 15603122T798

BLACK RIDGE SABA R50^{PV}

TE MANIA BUFF 16314^{SV}
BLACK RIDGE P121^{SV}

MATAURI REALITY 839
TE MANIA 14129
MATAURI NAVIGATOR L428
BLACK RIDGE 653

TURIROA 18P424^{SV}

TANGIHAU TOP SHELF L21
TURIROA 12925^V

STERN 10610
TANGIHAU J109
STERN 09400
TURIROA 04353



MARCH 2024 TRANSTASMAN ANGUS CATTLE EVALUATION

Dir	Dtrs	GL	B/Wt	200 Wt	400 Wt	600 Wt	Mwt	Milk	SS	DC	Cwt	EMA	Rib	Rump	RBV %	IMF%
-2.8	-4.4	-6.6	+7.1	+52	+97	+132	+153	+7	+2.9	-3.0	+67	+6.5	+0.4	+0.9	+0.4	-0.2
59%	48%	79%	81%	81%	79%	79%	75%	69%	76%	36%	66%	65%	66%	67%	57%	70%

A good heifer for late in the catalogue. She walks well and has style,length and femininity. Looks to me like a real female breeder.

PURCHASER: _____

PRICE: _____

LOT: 41

TURIROA 22T786^{PV}

BORN: 19/08/22
ID No.: 15603122T786

TURIROA PRINCE 18P240 (ET)^{SV}

GOLDWYN H817^{SV}
TURIROA L120 (ET)

S CHISUM 6175 (IMP USA)
GOLDWYN 512
TURIHAUA CRUMP E5 (ET)^{SV}
TURIROA 12904

TURIROA 16M225ET (ET)^{PV}

RANGATIRA ICEBREAKER 13-59
TURIROA 13968^V

MT MABLE THOR 660
KAHARAU 10-9091
MERCHISTON INFINITY 774
TURIROA 108591



MARCH 2024 TRANSTASMAN ANGUS CATTLE EVALUATION

Dir	Dtrs	GL	B/Wt	200 Wt	400 Wt	600 Wt	Mwt	Milk	SS	DC	Cwt	EMA	Rib	Rump	RBV %	IMF%
-12.6	-4.1	-4.3	+6.9	+36	+70	+85	+94	+9	+1.7	-3.1	+26	-0.6	+1.3	+0.9	+0.7	-0.6
62%	52%	79%	81%	81%	80%	80%	76%	71%	77%	41%	68%	67%	67%	68%	60%	71%

Strong pedigree with S Chisum, Crump, Thor and Infinity all in the mix.

PURCHASER: _____

PRICE: _____

LOT: 42

TURIROA 22T838^{PV}

BORN: 19/09/22
ID No.: 15603122T838

BLACK RIDGE SABA R50^{PV}

TE MANIA BUFF 16314^{SV}
BLACK RIDGE P121^{SV}

MATAURI REALITY 839
TE MANIA 14129
MATAURI NAVIGATOR L428
BLACK RIDGE 653

TURIROA 14039

TURIROA 11542 (ET)
TURIROA 05425^V

MERCHISTON INFINITY 774
TURIROA 108601
003157 OF TURIROA
822 OF TURIROA



MARCH 2024 TRANSTASMAN ANGUS CATTLE EVALUATION

Dir	Dtrs	GL	B/Wt	200 Wt	400 Wt	600 Wt	Mwt	Milk	SS	DC	Cwt	EMA	Rib	Rump	RBV %	IMF%
+8.6	+6.1	-5.0	+3.3	+36	+70	+92	+93	+20	+1.2	-6.2	+42	+2.4	+4.5	+5.6	-0.4	+1.2
61%	51%	80%	81%	82%	80%	80%	76%	72%	77%	37%	68%	66%	67%	68%	58%	71%

Good option here if you are in the yearling market with the data set she possesses. Great spread throughout, look at those fats!

PURCHASER: _____

PRICE: _____

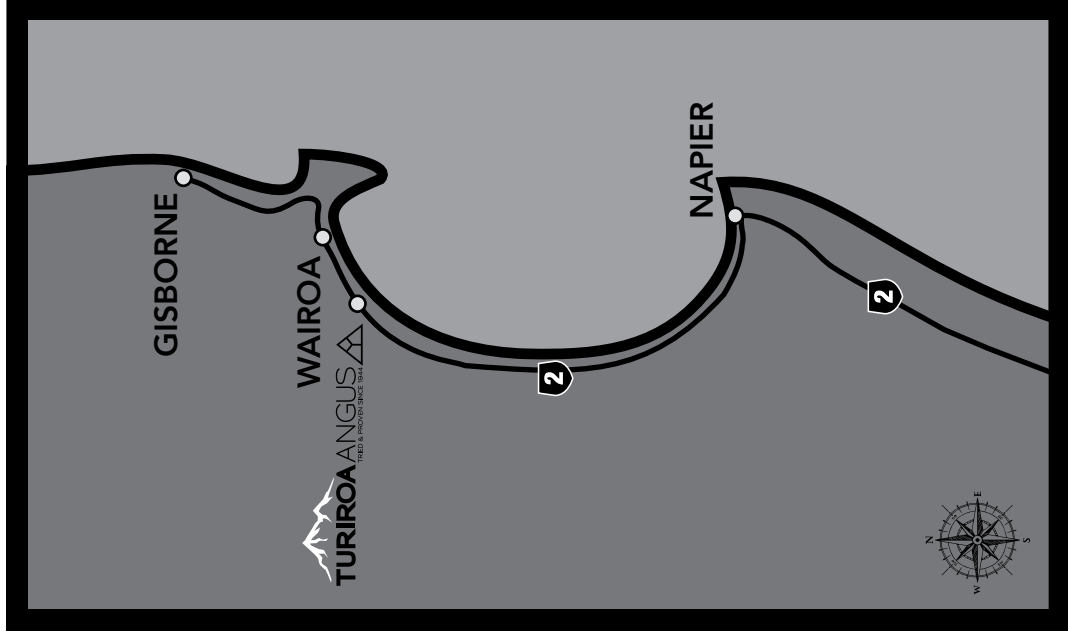
REDSHAW LIVESTOCK LTD

LIVESTOCK AGENTS - AUCTIONEERS

**NZ Owned and Operated
Covering the Hawke's Bay and East Coast**

For all your Livestock requirements, call one of our team -

Will Maxwell	027 5394 140	Dean Freeman	027 4451 944
Ken Simpson	027 2233 169	Malcolm MacDonald	027 4574 638
Scott Heasley	021 0827 3867	Carol Milligan	027 2632 241
Brian Nankervis	027 2300 481	Hamish MacDonald	027 8210 445



MAP TO TURIROA STUD

539 State Highway 2, RD3, Wairoa 4193

Andrew Powdrell Phone: 06 838 8805, Mobile: 027 622 8088

Email: arpowdrell@turiroa.co.nz

www.turiroaangus.co.nz

piv · t
DESIGN
www.pivotdesign.co.nz

graphics@pivotdesign.co.nz

Phone: 06 323 0740

NOTES:

PURCHASERS INSTRUCTION SLIP

Name: _____ Buyer No: _____ Telephone: _____

Farm Name: _____ Mobile: _____

Address: _____ NAIT No.: _____

_____ Email: _____

Lots Purchased: lot number: _____ Price: \$ _____

lot number: _____ Price: \$ _____

lot number: _____ Price: \$ _____

lot number: _____ Price: \$ _____

lot number: _____ Price: \$ _____

Transport Instructions (be definite): _____ Transit Insurance: Yes / No Term: _____

Company to be debited _____ BWRS AON FMG Other

Address: _____ **Signature of purchaser:** _____

_____ **Date:** _____

Please tick this box if you consent to your information being shared between [insurer name.], [vendor or organising body.] and/or the relevant livestock agency, for the purpose of offering you insurance.

53 QUALITY BULLS FOR SALE

FIRST SONS OF MM PARATROOPER
AND KAHARAU FURNACE Q308

ANNUAL BULL SALE:
Wednesday 26th June, 2pm

ON THE PROPERTY,
TURIROA, STATE HIGHWAY 2, WAIROA
and online with **bidr**

ENQUIRIES WELCOME



**Mystery Weekend
giveaway** draw to
celebrate
80 years of
breeding

22 S DROP IN CALF FEMALES

LOT ORDER

LOT	TAG
1	21S778
2	21S731
3	21S722
4	21S781
5	21S749
6	21S697
7	21S680
8	21S729

LOT	TAG
9	21S730
10	21S714
11	21S728
12	21S704
13	21S771
14	21S774
15	21S717
16	21S782

LOT	TAG
17	21S709
18	21S736
19	21S700
20	21S695
21	21S703
22	21S740

TAG ORDER

TAG	LOT
21S680	7
21S695	20
21S697	6
21S700	19
21S703	21
21S704	12
21S709	17
21S714	10

TAG	LOT
21S717	15
21S722	3
21S728	11
21S729	8
21S730	9
21S731	2
21S736	18
21S740	22

TAG	LOT
21S749	5
21S771	13
21S774	14
21S778	1
21S781	4
21S782	16

20 T DROP OPEN FEMALES

LOT ORDER

LOT	TAG
23	22T835
24	22T833
25	22T822
26	22T805
27	22T793
28	22T866
29	22T858
30	22T848

LOT	TAG
31	22T831
32	22T832
33	22T852
34	22T830
35	22T790
36	22T861
37	22T796
38	22T804

LOT	TAG
39	22T879
40	22T798
41	22T786
42	22T838

TAG ORDER

TAG	LOT
22T786	41
22T790	35
22T793	27
22T796	37
22T798	40
22T804	38
22T805	26
22T822	25

TAG	LOT
22T830	34
22T831	31
22T832	32
22T833	24
22T835	23
22T838	42
22T848	30
22T852	33

TAG	LOT
22T858	29
22T861	36
22T866	28
22T879	39