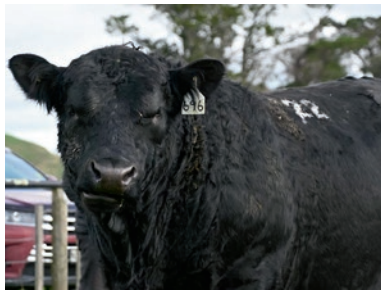




**Wednesday 25th June 2025 at 2.00pm**





ANNUAL SALE

Comprising 52 Rising Two Year Angus Bulls  
**WEDNESDAY 25TH JUNE 2025 at 2PM**

**ON THE PROPERTY, TURIROA, STATE HIGHWAY 2, WAIROA**  
and online with **bidr**

**AUCTIONEER: Neville Clark** 027 598 6537

**REFRESHMENTS PROVIDED**

**Andrew Powdrell**, Phone: (06) 838 8805 | Mobile: 027 622 8088 | Email: [arpowdrell@turiroa.co.nz](mailto:arpowdrell@turiroa.co.nz)

 Turiroa Angus  @turiroaangus

[www.turiroaangus.co.nz](http://www.turiroaangus.co.nz)

**PARTICIPATING COMPANIES:**

PGG WRIGHTSON, Bidr®,  
FERGUS RURAL, CARRFIELDS,  
L.I. REDSHAW, HAZLETT LIMITED.  
Overriding commission of 6%  
to outside companies.

**PLEASE BRING THIS CATALOGUE  
TO THE SALE**

# WELCOME TO TURIROA

We were thrilled to celebrate 80 years of breeding last year and pay tribute to those who have gone before us. The work and commitment particularly in fine tuning the cow herd to what it is today will certainly never be forgotten.

For the second year running our 2024 sale had to postponed due to flooding in our district. This was extremely disappointing as we were all set to go with our 80 year celebrations when flooding and road closures on the morning of the sale made it impossible to go ahead. Unfortunately we then missed the hype of week bull week and all the outside visitors it attracts.

Our sale finally went ahead two weeks later- this felt like two months! A huge thank you must go to our loyal local clientele who showed great support with a full clearance 51/51 with a top of \$17,000 to Orere Angus and an average of \$8931.00. Given all the disruptions we were pleased with the sale and the line up we put forward as they had come through another very wet winter. Thanks again to all those who helped us celebrate 80 years of breeding.

Myself, Tracey and family are excited about the next chapter of Turiroa, reflecting on the past but concentrating on the future. Recently we have further refined the cow herd and set targets going forward around efficiency, production and functionality in our females. We are targeting "cows that stay and steers that pay"! Efficient cows that have a long and productive life and

steers that add value by hitting the scales hard through strong, early growth with adequate carcass merit. This ensures they capture value from weaning to slaughter, not just at slaughter. With weaners making \$5-\$6 a kg at present a 20kg increase in weaning weight is \$100-\$120 a head at 6-8 months of age! Let alone capturing value later in the animal's life.

Sale bulls are all HD50K tested for genomically enhanced EBV's. This is a costly investment, but we are committed to providing you with the most up to date technology mixed with a bit of good old fashioned stockmanship. All females coming into the herd are tested also.

This year's lineup have been run in mobs of 35 up until March. We are committed to presenting the bulls in good forward order without being overdone. We are really pleased with this year's lineup and how the bulls have been progressing. The last few years we have really targeted that deep, thick, easy-doing type and we are really starting to see it coming through now.

There are some exciting new sires represented - Australian Sire Karoo Realist 278 and Ratanui Avenger 064. Both have bred well for us with Avenger in particular leaving progeny that tick all the boxes for moderate, sound, functional hill country bulls. There will be more sons of Kaharau Furnace who sired our top priced bull at last year's sale to Orere Angus and old

favourites Turiroa Prince 18P240 and Turiroa Nitro 17N122 etc. will also be well represented. Once again the evenness in type is evident right through the catalogue meaning there is plenty of options for clients and we look forward to presenting them to you. Videos of the bulls will be up on the Turiroa Angus website early June.

To offer flexibility to our clients we will again be incorporating BIDR into our on farm sale, allowing those who cannot make the sale to view and bid on line. However we still recommend viewing the bulls prior to the sale.

With 80 years of breeding behind us over this time our breeding philosophies have remained the same: to produce sound, functional, fertile and maternal cattle with constitution and excellent breed type. These cattle must have the ability to leave top class off- spring that can hit target markets and weights sooner. Our cow herd is the measuring parameter for do-ability, survivability and longevity. They also measure temperament, udder quality and feed efficiency. The top profit drivers for beef cattle enterprises that you can control to MAXIMISE the amount of beef produced on your property therefore adding VALUE along the way not just at slaughter are:

- Stocking rate
- Pregnancy test rate
- Weaning rate
- Weaning weight
- Growth Rates

Our cattle have been selected for large scrotal size, produce vigorous calves that grow fast and dams that have superior milking ability for generations.

We are excited to present this years team of very even, powerful sale bulls. We have not chased breeding fads or latest trends, instead using eye-appraisal and stockmanship first then incorporating this with the raft of EBVs we have available today.

Sale Bulls are grass fed. We do not feed crops to any of our cattle. All bulls in this catalogue have been vet tested for penile soundness, palpated and morphology tested, BVD tested and vaccinated, 7 in1 vaccinated twice and are AMF, NHF, CAF and DDF pedigree free or tested free, TB status C10 and of course backed by our THREE year guarantee.

We are available anytime to discuss your bull requirements or let us know if you would like to come and view the bulls prior to the sale. Please get in touch if you would like help with finding accommodation in Wairoa as there are various BNB's available that we can provide contact details for. We will be providing courtesy transport for those living/staying locally who would like to make a night of it otherwise please organise safe transport home.

We look forward to catching up on the 25th of June for a beer, the boys will have the Webers hot and Nolans famous sea food chowder will be on the go!

**ANDREW AND TRACEY POWDRELL**

## 80 YEARS STRONG

The stud was founded in 1944 by Walter Powdrell. Walter and his bride Ruth were given five pedigree Angus heifers as a wedding present from RE Jefferson (Ruth's father) who was also a well-known Hereford breeder at the time. Walter developed the stud and it wasn't long before he had an outstanding herd of cows.

The stud was taken over in the late seventies by two of Walters sons Rick and Rowley who grew the stud numbers to cater for an ever-expanding market. In 2000 Rick and wife Olivia took over the stud outright with Olivia doing the stud books for 40 years. They were joined by Andrew at this time who then went on to manage the stud and increase the numbers utilizing ET.

Andrew and wife Tracey took over full control of the stud in 2017 with Turiroa now selling 50 -55 bulls at its Annual Rising 2yr Sale and another 25-30 privately. Around 20 lower birth weight yearling bulls are sold in the Spring with surplus heifers being sold in the past to China. All Bulls and heifers are now HD50K tested for genomically enhanced EBV's. We are building the herd slowly and carefully to around 300 top quality females.

# SIGNIFICANT HIGHLIGHTS

**1972** -Turiroa was the first stud in New Zealand to export a bull at auction back to Scotland to the Wedderlie Stud.

Over the years Turiroa has exported cattle to China, Japan, Australia as well as embryos and semen, with semen also being sold to South Africa.

**1996** - Highest top price of \$28,000 and average of \$5100 for the stud.

**2002** - Turiroa set an Australasian record high on farm sale average at the time of \$9388 with eight stud bulls sold that day.

**2012** - Record sale average of \$10,927 with 9 stud bulls sold and a top of \$72,000.

**2020** - New Zealand On Farm Record at the time for the highest priced bull for Turiroa Ragnar 18P224 selling for \$104,000. Turiroa Complete 18P250 also selling that day for \$86,000.

**2023** - Achieved second highest average sale price in New Zealand of \$12,860.00.

## REPRODUCTIVE FERTILITY IN HERD BULLS.

The most important factor influencing the profitability of a beef cow operation is the percentage of the calf crop weaned. The herd bull influences overall herd fertility more than any other single animal.

Several factors influence a bull's fertility. A bull must be developed properly and have reached puberty to be fertile. Other determinants are social dominance, Libido, good nutrition as well as physical characteristics such as SCROTAL CIRCUMFERENCE and SEMEN QUALITY.

### SCROTAL CIRCUMFERENCE.

As scrotal circumference increases, so does the daily production of high quality sperm. There is a positive correlation between a sire's scrotal circumference, the scrotal circumference of his sons and the pregnancy rate of his daughters. Bulls with a larger scrotal circumference are likely to sire sons with large scrotals and his daughters are likely to reach puberty at younger ages and are more likely to be cycling at the beginning of the breeding season and are more likely to become pregnant earlier when compared with the off-spring of bulls with a small scrotal circumference.

All bulls scrotal measurement is an in - direct estimate of the mass of testicular tissue, which is directly related to sperm quantity and quality which is a measure of his capacity eg. Bull to cow ratio.

### SEMEN QUALITY.

Semen quality is determined by the volume of the ejaculate and by the MOTILITY and MORPHOLOGY of the sperm cells.

Sperm MOTILITY is calculated by evaluating the percentage of spermatozoa with forward movement in a sample ejaculate. Semen MORPHOLOGY is calculated by evaluating the number of normal spermatozoa in a sample ejaculate in relation to sperm with primary and secondary abnormalities. Semen MORPHOLOGY influences pregnancy rates therefore selection of bulls with better quality semen can help increase overall pregnancy rates in a herd.

**NOTE:** Turiroa has been selecting for large scrotal size for many years and have listed the individual Morphology of each bull catalogued. The standard is 75% or better for Morphology. Most Turiroa Bulls are consistently achieving well over this. Also included is actual scrotal size (taken April 2025) and dams performance by way of calves born , eg 6/6 . (Six calves born from six matings etc.) in a simple easy to read box.





# BULL FERTILITY SOUNDNESS CHECK

## TURIROA ANGUS

On the 14<sup>th</sup> April 2025, all of the Turiroa Angus bulls on offer were presented for a crush side examination to ensure that no anatomical abnormalities of the reproductive organs were present



### TESTES

The testicles were palpated to ensure the presence of two symmetrical, turgid testes with no lumps or deformities

### PENILE SOUNDNESS

Protrusion of the penis was obtained by electrostimulation and the penis and prepuce were inspected for persistent frenulum, signs of disease, damage or deviations

### SEMEN EVALUATION

A semen sample was collected and evaluated for progressive motility, morphology and density. All semen was assessed under oil emersion magnification through Eosin/Nigrosin staining with morphology exceeding 75% normal spermatozoa



Helen Taylor BVSc (Dist)

Wairoa Farm Vets  
p. 06 838 3832  
m. 021 0414 026  
e. [helen@wairoafarmvets.co.nz](mailto:helen@wairoafarmvets.co.nz)  
w. [wairoafarmvets.co.nz](http://wairoafarmvets.co.nz)

### **PLEASE NOTE:**

- Accredited brucellosis and tuberculosis free herds.
- Strictly commercial orientated. Turiroa bulls are not overfed prior to sale.
- Sale bulls AA Inspected and fully guaranteed.
- Performance recorded & carcass scanned.
- Our cattle are freeze branded for easy identification.
- 80 years in the business.
- **SEMEN**- Turiroa retains the right to take up to 200 straws of semen off any bull sold in this catalogue for in herd use only at our cost.

### **DELIVERY:**

Cartage will be paid by the vendor if uplifted within two weeks of the sale. South Island delivery paid by vendor to Feilding. Bulls may be held under exceptional circumstances by arrangement with vendor.

### **CONDITIONS OF SALE:**

The sale will be conducted with the Conditions of Sale of the Wairoa Stock and Station Agents' Association, a copy of which will be exhibited.

### **OVERSEAS PURCHASERS:**

All sales to overseas purchasers are on condition that the cattle pass all necessary tests required for entry into the purchasing country.

### **INSURANCE:**

Insurance is recommended and can be arranged with a representative who will be present on sale day.

### **PAYMENT:**

Due date for payment on all cattle sold at this sale is 14 (fourteen) days from the date of sale.

## **FERTILITY GUARANTEE**

All lots contained within this catalogue are covered by our 3 season warranty with regard to soundness and fertility. In the unlikely event that a bull should develop a fault that affects his ability to breed that is not covered by normal insurance we will refund to the purchaser a proportion of the purchase price depending on the length of service the bull has given. Namely two thirds of the purchase price after one year of service and one third after two years, minus the salvage costs and any semen sales from the bull. To be available as a credit on a replacement bull at the following sale or a suitable replacement offered if available.

### **The following conditions apply:**

- 1 That the purchaser shall throughout the guarantee period give the bull full and sufficient opportunity to prove that he is a good server and stock - getter of, to demonstrate his ability to get stock, whichever the case may be.
- 2 The Purchaser shall throughout the guarantee period assure that the bull has proper care and attention, and is maintained in good condition and health. Bull not to be disposed of unless for humane reasons.
- 3 Failure on the part of the purchaser to observe the foregoing conditions or any of them shall render the undertaking void.

The cost of taking delivery or/and the returning a bull to the Vendor shall be borne by the Purchaser. A veterinary certificate will be required by the vendor.

This sale will be hosted by bidr®  
(bidr.co.nz) as a HYBRID ON-FARM  
auction, with online bidding and a  
live-stream available for  
online purchasers.

All intending online purchasers must register with bidr®  
using an account held with one of the bidr® partner agencies  
in advance of the sale date.

The bidr® team is available to assist intending purchasers  
with signing up and registering - please call 0800 TO BIDR

**Caitlin Barnett**

Sales & Operations Manager  
021 405 6156

**Bianca Perkins**

Business Development Coordinator  
027 732 0006

**Bruno Santos**

Upper North Island Territory Manager  
027 221 8276

**Elle Woodgate**

Upper South Island Territory Manager  
027 340 5518

**Olivia Manley**

Lower North Island Territory Manager  
027 348 6354

**Sam Murphy**

Lower South Island Territory Manager  
027 243 2736

# TRANSTASMAN ANGUS CATTLE EVALUATION EBVS

EBVs and Selection Indexes remove the effects of non-genetic factors (e.g. feeding regimes, animal age) to provide the best measure of an animals genetic merit.

To ensure the accuracy of EBV and Index data, AngusNZ combine with Angus Australia to create a reference population known as the TransTasman Angus Cattle Evaluation (TACE).

By using TACE – along with visual and structural appraisal – will assist in creating a balanced phenotypical and genotypical breeding outcome.

## **FOUR STEPS TO SELECTING YOUR NEXT ANGUSNZ SIRE:**

1. Consider your individual EBVs of importance
2. Consider other traits of importance (e.g. visual assessment)
3. Identify the **AngusNZ selection** index of most relevance to your breeding programme
4. **Rank animals** using the chosen Selection Index.

AngusNZ publishes the following TACE EBVs and Selection Indexes. Please note that only EBVs from the same TACE analysis can be directly compared.



Growth EBVs	Fertility & Birth EBVs	Carcase EBVs	Other EBVs	Selection Indexes
Birth Weight	Scrotal Size	Carcase Weight	Docility	Self Replacing
200 Day Growth	Days to Calving	Eye Muscle Area	Structural Assessment	AngusPure
400 Day Weight	Gestation Length	Rib Fat		Heifer Dairy Terminal
600 Day Weight	Calving Ease Direct	Rump Fat		<i>Details about the Angus Selection indexes can be found at:</i> <a href="https://breedplan.une.edu.au/media/bqjbnnbh/using-new-zealand-angus-selection-indexes.pdf">breedplan.une.edu.au/media/bqjbnnbh/using-new-zealand-angus-selection-indexes.pdf</a>
Milk (Maternal)	Calving Ease Daughters	Retail Beef Yield		
Mature Cow Weight		Intramuscular Fat		

For more information, including EBV descriptions and how to use them go to: [breedplan.une.edu.au/media/dtqpdm34/using-and-understanding-breedplan-ebvs.pdf](https://breedplan.une.edu.au/media/dtqpdm34/using-and-understanding-breedplan-ebvs.pdf)



Beef + Lamb Genetics have developed a new tool to make it easier to find the best bulls for your farming operation. Using a series of buttons and sliders, you can refine down your breeding criteria. On a click of a button, nProve then generates a list of bulls that best fit that criteria. It's free to use, there's no need to register and there's also helpful tips to get started. Try it out at [www.nprove.nz](https://www.nprove.nz)



**DISCLAIMER:** The TransTasman Angus Cattle Evaluation Estimated Breeding Values (EBVs) contained within this sale catalogue were compiled by the Agricultural Business Research Institute (ABRI) from the data supplied by breeders. Neither Angus NZ nor ABRI oversee or audit the collection of this data.


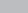
## Heritabilities of Traits in Angus Group TACE (TransTasman Cattle Evaluation)

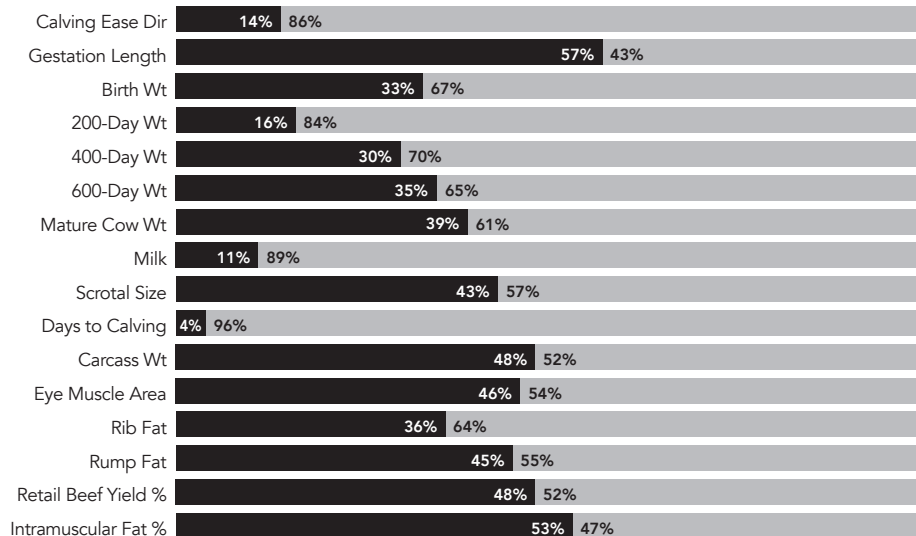
Only part of the variation that we observe among animals is due to genetic differences. The majority of the variation is generally due to non-genetic factors such as differences in environment and nutrition.

The degree to which genetic differences influence performance varies from trait to trait. This is explained by differences in the “heritability” of the traits.

Growth and carcase traits tend to have moderate to high heritabilities (i.e. 20 to 60%), whilst maternal traits have low heritabilities (10% or lower).

The TransTasman Angus Cattle Evaluation takes into account the different degrees of heritability of various traits, and the known genetic relationships between the traits.

-  The amount of genetic influence in a trait.
-  The amount of environmental (non-genetic) influence in a trait.





## INDEPENDENTLY INSPECTED

**ALL BULLS IN THIS CATALOGUE HAVE BEEN  
INDEPENDENTLY INSPECTED**

This Inspection service is offered by Angus New Zealand to breeding members as a form of quality assurance and indicates that the animal has passed inspection **on the specific day it was viewed**. The inspection is carried out by an approved Angus NZ Inspector, and animals of a minimum age which **pass** this inspections may assume an "Independently Inspected" status and may be promoted under the associated Angus NZ "Independently Inspected / AA Tick" logo (attached).

Inspections are carried out in accordance with the Angus NZ Inspection Manual 2011.

### ANGUS NZ BREED AVERAGES FOR YEAR 2023 BORN CALVES

DIR	DTRS	GL	BWt	200	400	600	MCWt	Milk
+1.8	+1.2	-4.1	+4.2	+42	+79	+101	+91	+14
SS	DC	CWt	EMA	Rib	Rump	RBY%	IMF%	
+2.1	-4.1	+49	+3.3	+1.2	+1.4	+0.3	+1.0	

## O.S.H.

Under the Occupation Health and Safety Act 1992 we are required to advise people of possible hazards.

- Cattle Movements**
- Vehicles and Machinery**
- Cattle Yards: Slippery Surface**
- Pavilion: Seating**

SELECTION INDEXES		
SR \$	AP \$	HDT \$
\$116	\$117	\$105

Use this table as a guide to compare individual animals with the current genetic level of the breed.

MAY 2025 TRANSTASMAN ANGUS CATTLE EVALUATION PERCENTILE BAND FOR ALL 2023 - BORN ANIMALS																				
Calv-Ease			Birth		Growth				Fertility				Carcase				Index			
Dir	Dtrs		GL	Bwt	200	400	600	Mwt	Milk	SS	DC	Cwt	EMA	Rib	P8	RBY	IMF	SRI	API	HDT
%			days	kg		kg				cm	days	kg	sq.cm	mm		%		\$		
Top 1%	+10.2	+9.1	-9.6	-0.2	+64	+112	+147	+151	+27	+4.6	-7.9	+86	+11.1	+5.3	+6.8	+1.8	+4.2	+191	+214	+140
Top 5%	+8.4	+7.2	-7.7	+1.2	+57	+101	+132	+131	+23	+3.8	-6.6	+75	+8.4	+4.0	+4.9	+1.3	+3.2	+165	+181	+131
Top 10%	+7.3	+6.1	-6.8	+1.9	+53	+96	+125	+121	+21	+3.4	-6.0	+69	+7.2	+3.3	+4.0	+1.1	+2.6	+153	+165	+126
Top 20%	+5.6	+4.6	-5.8	+2.7	+49	+90	+117	+110	+19	+2.9	-5.3	+62	+5.7	+2.6	+3.0	+0.8	+1.9	+139	+147	+120
Top 30%	+4.4	+3.5	-5.1	+3.3	+47	+86	+111	+103	+17	+2.5	-4.8	+57	+4.7	+2.1	+2.4	+0.6	+1.5	+130	+135	+116
Top 40%	+3.3	+2.5	-4.6	+3.8	+44	+82	+106	+97	+16	+2.3	-4.4	+53	+3.9	+1.6	+1.9	+0.5	+1.2	+123	+126	+112
Top 50%	+2.2	+1.5	-4.1	+4.2	+42	+79	+101	+91	+14	+2.1	-4.1	+50	+3.2	+1.2	+1.4	+0.4	+0.9	+116	+116	+107
Top 60%	+1.1	+0.5	-3.6	+4.6	+40	+76	+97	+85	+13	+1.8	-3.8	+46	+2.5	+0.8	+0.9	+0.2	+0.6	+109	+107	+103
Top 70%	+0.0	-0.6	-3.0	+5.1	+38	+72	+92	+79	+12	+1.6	-3.4	+42	+1.7	+0.4	+0.4	+0.1	+0.3	+101	+98	+98
Top 80%	-1.6	-1.9	-2.4	+5.6	+35	+68	+86	+71	+10	+1.3	-3.0	+37	+0.8	-0.1	-0.3	-0.1	-0.1	+93	+85	+92
Top 90%	-4.1	-3.9	-1.4	+6.4	+31	+62	+78	+60	+8	+0.8	-2.3	+30	-0.5	-0.9	-1.4	-0.5	-0.6	+80	+67	+82
Top 95%	-6.3	-5.6	-0.5	+7.0	+28	+57	+71	+52	+6	+0.4	-1.7	+24	-1.6	-1.6	-2.2	-0.7	-1.0	+68	+53	+74
Top 99%	-11.3	-9.7	+1.4	+8.3	+21	+47	+56	+33	+3	-0.3	-0.7	+11	-3.7	-3.0	-4.1	-1.2	-1.9	+46	+26	+56



Negative (lower) values more favourable



Negative (lower) values more favourable



## VISUAL APPRAISAL IS VERY IMPORTANT FOR SELECTING BULLS

---

- **MASCULINE TRAITS** - A strong head, jaw and thick neck indicate high levels of libido, testosterone and reproductive efficiency.
- **NECK LENGTH** - A thick necked animal matures and reaches puberty earlier and has more libido. A longer neck indicates a higher maintenance animal that is slower to reach puberty and rebreed.
- **HEART GIRTH** - Larger heart girth is an indicator of vigor and easy keeping ability. Small heart girth animals are more susceptible to stress, are higher maintenance and do not perform well.
- **STRUCTURAL SOUNDNESS** - Feet and bone- Hill country cattle cover large distances over rugged terrain so a strong skeleton is essential.
- **REPRODUCTIVE** - A tight sheath, good sized and shaped testicles are essential.
- **FLANK** - Deep flanked animals are easier keeping, have more meat in the rump and have more maternal and reproductive efficiency. Higher flanked animals tend to be higher maintenance and take longer to finish on grass.

## LOOKING AFTER YOUR NEW BULL

1. Run your bull with a steer or cow as a companion.
2. Handle them quietly and don't rush them
3. Young bulls are still growing, so fresh feed and a little hay will maintain their growth pattern and help them to settle in.
4. Turiroa bulls are accustomed to being handled by Stockmen on horses and motorbikes and with dogs.
5. When the season is finished, the bull should be drenched and put away on good feed. Adequate feed will help stop fighting and help the bulls settle into their groups





# BETTER BALANCED BEEF

## **BRED FOR BALANCE**

Strong maternal influence combined with quality carcase attributes & superior genetic traits.

## **FARMED FOR BALANCE**

All round performer – from hill country through to intensive finishing systems.

## **RECORDED FOR BALANCE**

Performance Recorded specific to NZ farming conditions & commercial market focused selection indexes available through nProve.

## **CONSUMED FOR BALANCE**

Exceeds consumer demands.

**ANGUS**  
■ NEW ZEALAND

# UNMATCHED GENETICS EXPERTISE

PGG Wrightson Genetics is New Zealand's only team of dedicated livestock genetics specialists.

Our experts combine local knowledge, data-driven insights, and industry-leading expertise to design breeding programs that build sustainable, high-performing livestock businesses delivering lasting value for our clients.

**EMMA POLLITT**

East Coast - Genetics Rep  
027 597 5821

**CODY CLARK**

East Coast - Livestock Rep  
027 446 9969

**HAMISH HOLST**

East Coast - Livestock Rep  
027 344 7504

**TONY HOLDEN**

East Coast - Livestock Rep  
027 598 1538

**CAM HEGGIE**

Upper North Island - Genetics  
Rep & Auctioneer  
027 501 8182

**JAMIE HAYWARD**

East Coast - Regional Livestock  
Manager  
027 434 7586

**ALEX CHRISP**

East Coast - Livestock Rep  
027 801 0104

**CHRIS HURLSTONE**

East Coast - Livestock Rep  
027 598 6542

**MASON BIRRELL**

East Coast - Livestock Rep  
027 496 7253

For more information go to  
[pggwrightson.co.nz/genetics](http://pggwrightson.co.nz/genetics)



[fb.com/pgwgenetics](https://fb.com/pgwgenetics)  
[instagram.com/pgwgenetics](https://instagram.com/pgwgenetics)

Scan here to go to  
our Genetics Hub



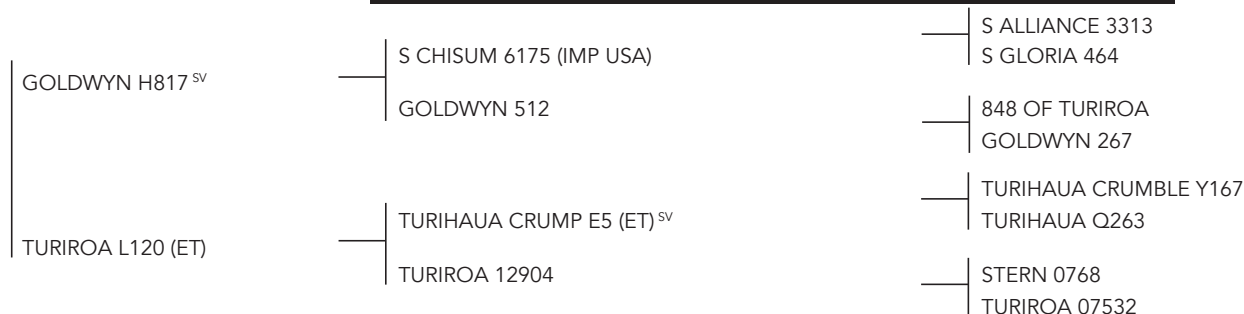
**KAROO K12 REALIST N278**  
**(IMP AUS) (SV)**





# REFERENCE SIRE **TURIROA PRINCE 18P240 (ET) <sup>SV</sup>**

**BORN: 03/08/18**



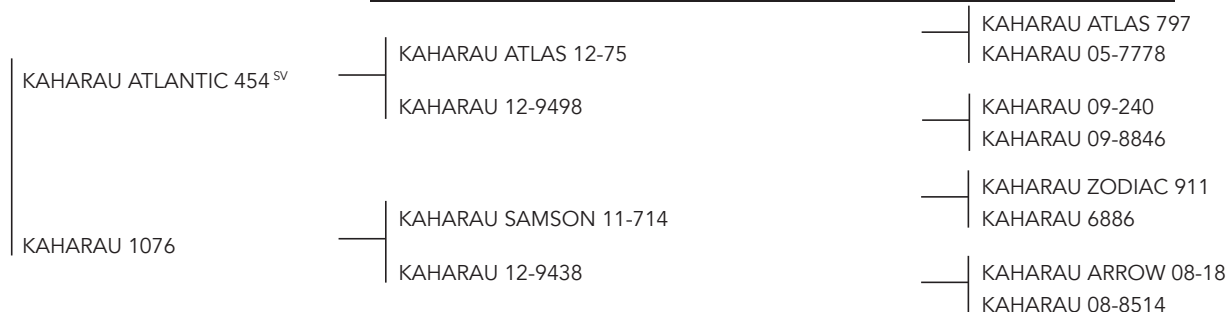
MAY 2025 TRANSTASMAN ANGUS CATTLE EVALUATION																	
DIR	DTRS	GL	BWt	200	400	600	MCWt	Milk	SS	DC	CWt	EMA	Rib	Rump	RBY	IMF	INDEXES
-9.0	-0.7	-3.8	+6.2	+41	+83	+101	+101	+15	+2.3	-5.4	+42	+0.7	+1.5	+1.9	+0.7	+0.2	SR AP
74%	62%	82%	94%	93%	92%	93%	87%	80%	91%	56%	80%	80%	80%	80%	75%	81%	+\$130 +\$92

Prince has been a solid performer for us over the years. He leaves a great station type and possesses a rock solid pedigree with Chisum, Crump and 848 of Turiroa all in the mix. These are his last sons on offer.



# REFERENCE SIRE **KAHARAU FURNACE Q308 <sup>SV</sup>**

**BORN: 31/07/19**



## MAY 2025 TRANSTASMAN ANGUS CATTLE EVALUATION

DIR	DTRS	GL	BWt	200	400	600	MCWt	Milk	SS	DC	CWt	EMA	Rib	Rump	RBY	IMF	INDEXES	
+0.8	-1.3	-3.8	+4.9	+40	+67	+82	+79	+8	+1.9	-1.4	+32	+6.2	+2.4	+1.5	+0.8	-0.3	SR	AP
72%	56%	82%	95%	93%	92%	92%	86%	77%	89%	46%	79%	77%	78%	79%	72%	79%	+\$88	+\$69

Furnace sired our top price bull to Orere Angus at last years sale. Furnace is a moderate framed bull with a great coat and has left a consistent line of sons that make good hill country types.





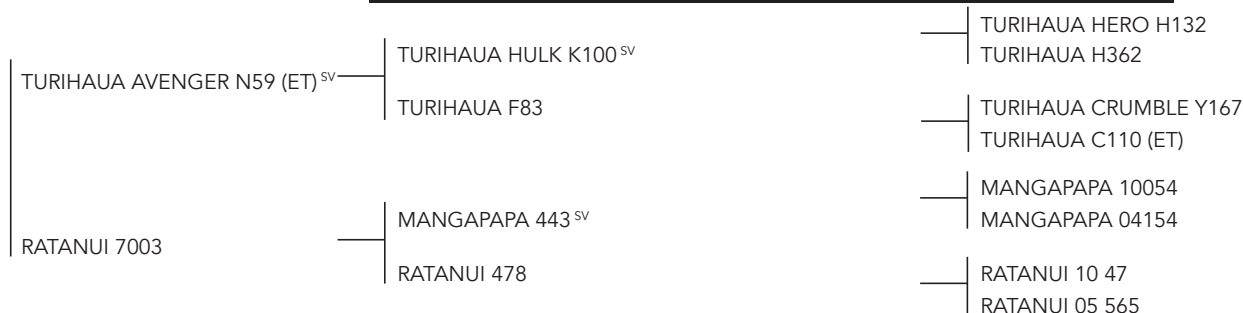
**RATANUI AVENGER 064  
(SV)**





# REFERENCE SIRE RATANUI AVENGER 064<sup>SV</sup>

BORN: 28/06/20



## MAY 2025 TRANSTASMAN ANGUS CATTLE EVALUATION

DIR	DTRS	GL	BWt	200	400	600	MCWt	Milk	SS	DC	CWt	EMA	Rib	Rump	RBY	IMF	INDEXES	
-3.7	+2.4	-3.8	+5.1	+38	+76	+95	+110	+7	+1.4	-5.0	+37	+3.8	+4.4	+5.4	+0.9	-1.1	SR	AP
71%	56%	81%	94%	92%	90%	91%	85%	75%	86%	49%	78%	75%	76%	77%	70%	77%	+\$145	+\$117

We purchased Avenger because he had three very good NZ bred bulls back in his pedigree-Turihaua Hulk K100, Crumble and Manapapa Scotty 443. We were keen to blend these bloodlines in here at Turiroa and he hasn't disappointed. Avenger is your classic hill country type - medium framed, very sound, thick through the middle with a good hindquarter. His progeny are chips off the old block and we think they will impress

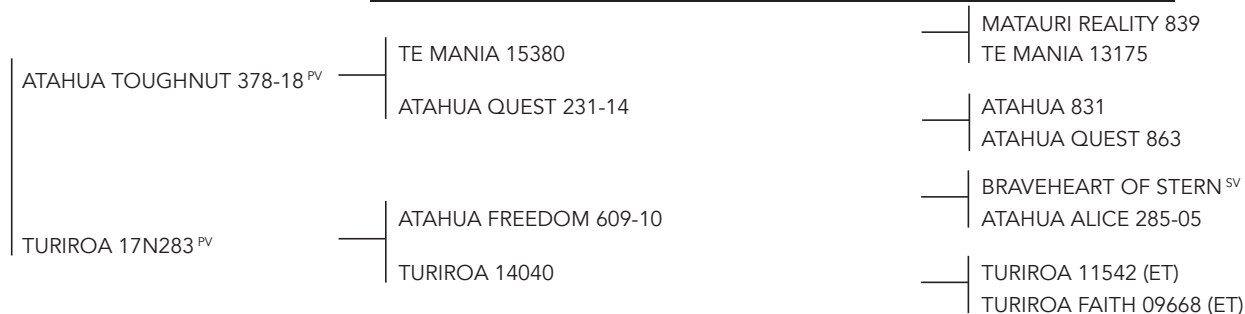


**TURIROA TOUGHNUT**  
**21S634 (PV)**



# REFERENCE SIRE **TURIROA TOUGHNUT 21S634<sup>PV</sup>**

**BORN: 26/08/21**



## MAY 2025 TRANSTASMAN ANGUS CATTLE EVALUATION

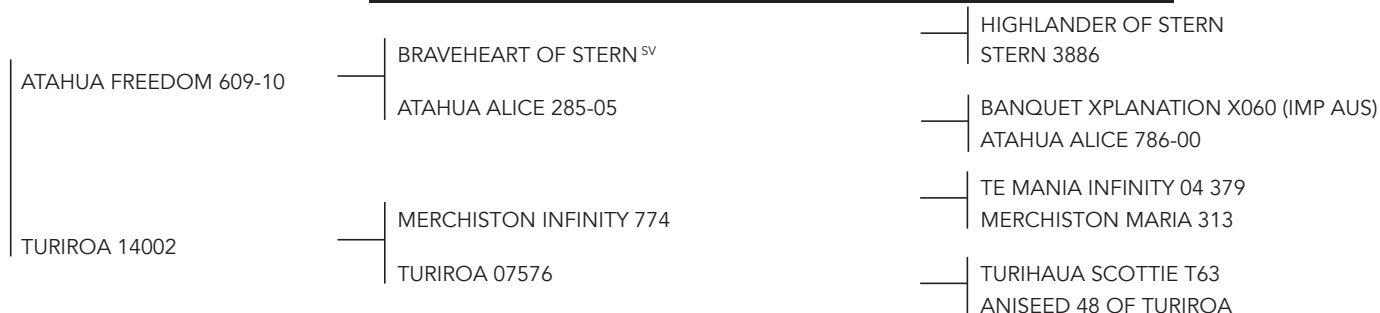
DIR	DTRS	GL	BWt	200	400	600	MCWt	Milk	SS	DC	CWt	EMA	Rib	Rump	RBV	IMF	INDEXES	
+4.1	-4.2	-8.6	+4.8	+34	+77	+100	+106	+8	+2.8	-4.5	+50	+8.2	+3.8	+4.1	+0.5	+1.7	SR	AP
70%	56%	82%	90%	89%	87%	88%	83%	75%	82%	45%	76%	73%	74%	74%	67%	76%	+\$140	+\$141

Used lightly as a yearling. Toughnut has grown out well with a great backend and handy dataset. More sons next year.



**REFERENCE SIRE** **TURIROA NITRO 17N122<sup>SV</sup>**

**BORN: 12/08/17**



MAY 2025 TRANSTASMAN ANGUS CATTLE EVALUATION																		
DIR	DTRS	GL	BWt	200	400	600	MCWt	Milk	SS	DC	CWt	EMA	Rib	Rump	RBY	IMF	INDEXES	
+0.3	-3.8	-4.5	+5.6	+39	+75	+96	+100	+9	+3.1	-1.6	+33	+8.8	-1.8	-0.3	+1.7	-0.6	SR	AP
77%	63%	82%	96%	95%	93%	94%	90%	84%	91%	54%	82%	80%	81%	81%	75%	81%	+\$94	+\$75

Nitro has been a consistent breeder over the years with sons selling up to \$52,000. He has length, plenty of muscle and is super sound.



# Why buy an HD50K tested bull?



1. Allows you as a purchaser to be more confident the **progeny performance of the bull you purchase will match his figures**
2. Increases accuracy of Angus BREEDPLAN EBVs and indexes for young Angus bulls with limited or no progeny, daughters or carcass information
3. Increases accuracy of Angus BREEDPLAN EBVs for time consuming, difficult, expensive and hard to measure traits such as intramuscular fat and eye muscle area

For more information contact Zoetis Beef Specialist - Amy Hoogenboom  
021 199 0989 | [amy.hoogenboom@zoetis.com](mailto:amy.hoogenboom@zoetis.com)

zoetis

**LOT: 1****TURIROA 23U808<sup>PV</sup>****PURCHASER:** \_\_\_\_\_**BORN: 17/08/23****PRICE:** \_\_\_\_\_**ID No.: 15603023U808**

KAHARAU FURNACE Q308<sup>SV</sup> | KAHARAU ATLANTIC 454<sup>SV</sup>  
 KAHARAU 1076

KAHARAU ATLAS 12-75  
 KAHARAU 12-9498  
 KAHARAU SAMSON 11-714  
 KAHARAU 12-9438

TURIROA 18P432<sup>SV</sup>

CRICKLEWOOD H60  
 TURIROA 12885

TE MANIA 09 492  
 WAITERENUI MAID E161  
 TURIROA 10683  
 TURIROA 09726

**FERTILITY**

MORPHOLOGY	85%
SCROTAL	41cm
DAM PERFORMANCE	4/4

**MAY 2025 TRANSTASMAN ANGUS CATTLE EVALUATION**

Dir	Dtrs	GL	B/Wt	200 Wt	400 Wt	600 Wt	Mwt	Milk	SS	DC	Cwt	EMA	Rib	Rump	RBY %	IMF%
-7.0	-3.7	-5.7	+7.3	+42	+64	+76	+62	+13	+2.5	-5.0	+33	+6.0	+0.6	-0.5	+1.2	-1.0
64%	53%	81%	82%	83%	81%	82%	78%	73%	78%	41%	70%	69%	69%	70%	62%	73%

**ACTUALS (KGS)**

17/08/23	03/04/24	30/10/24	15/03/25
35kg	314kg	550kg	705kg

Lovely Furnace son to kick off the sale! Deep bodied, super quiet and will be a great asset to any herd. Strong NZ pedigree to go with it.

**LOT: 2****TURIROA 23U819<sup>PV</sup>****PURCHASER:** \_\_\_\_\_**BORN: 25/08/23****PRICE:** \_\_\_\_\_**ID No.: 15603023U819**

KAHARAU FURNACE Q308 <sup>SV</sup>	KAHARAU ATLANTIC 454 <sup>SV</sup>
	KAHARAU 1076

KAHARAU ATLAS 12-75	
KAHARAU 12-9498	
KAHARAU SAMSON 11-714	
KAHARAU 12-9438	

TURIROA 18P417<sup>SV</sup>

MATAURI OUTLAW L426
TURIROA 09704

MATAURI OUTLIER F031	
MATAURI 08849	
TURIROA CARGO 80	
TURIROA 04325	

**FERTILITY**

MORPHOLOGY	93%
SCROTAL	43cm
DAM PERFORMANCE	4/4

**MAY 2025 TRANSTASMAN ANGUS CATTLE EVALUATION**

Dir	Dtrs	GL	B/Wt	200 Wt	400 Wt	600 Wt	Mwt	Milk	SS	DC	Cwt	EMA	Rib	Rump	RBV %	IMF%
-2.3	-1.6	-1.0	+6.6	+50	+89	+116	+122	+12	+2.6	-1.2	+60	+0.7	-0.8	-2.1	+0.8	-1.0
64%	53%	80%	82%	82%	80%	81%	77%	72%	78%	41%	69%	68%	68%	69%	61%	73%

**ACTUALS (KGS)**

25/08/23	03/04/24	30/10/24	15/03/25
35kg	328kg	554kg	724kg

Stylish bull with length and good growth EBV's. A solid pedigree here. This bull will leave great progeny.





# *We're proud supporters of rural communities*

Working alongside Turiroa Angus we are  
part of the team

As a specialist agribusiness bank, our managers live and work locally. We're committed to supporting rural communities and we are proud to sponsor Turiroa Angus.

If you'd like to grow with Rabobank call  
Jock Ironside on **021 240 2894**





**LOT: 3****TURIROA 23U814<sup>PV</sup>****PURCHASER:** \_\_\_\_\_**BORN: 07/08/23****PRICE:** \_\_\_\_\_**ID No.: 15603023U814**

KAHARAU FURNACE Q308 <sup>SV</sup>	KAHARAU ATLANTIC 454 <sup>SV</sup>
	KAHARAU 1076

KAHARAU ATLAS 12-75	
KAHARAU 12-9498	
KAHARAU SAMSON 11-714	
KAHARAU 12-9438	

TURIROA L167

TURIHAUA F14 (ET)	
TURIROA 09701	

TURIHAUA NIMBLE W122	
TURIHAUA U35	
TURIROA CARGO 80	
102153 OF TURIROA	

**FERTILITY**

MORPHOLOGY	84%
SCROTAL	38cm
DAM PERFORMANCE	7/7

**MAY 2025 TRANSTASMAN ANGUS CATTLE EVALUATION**

Dir	Dtrs	GL	B/Wt	200 Wt	400 Wt	600 Wt	Mwt	Milk	SS	DC	Cwt	EMA	Rib	Rump	RBY %	IMF%
-2.6	-1.7	-5.6	+7.1	+40	+60	+80	+86	+4	+0.5	-3.2	+24	-2.7	+1.8	+2.2	+0.1	-0.5
65%	53%	81%	82%	83%	81%	82%	78%	73%	79%	41%	70%	69%	69%	70%	61%	73%

**ACTUALS (KGS)**

07/08/23	03/04/24	30/10/24	15/03/25
37kg	300kg	552kg	710kg

Another lovely Furnace son with length and a great pedigree. Good fat EBV's. Very tidy all round bull.



**LOT: 4****TURIROA 23U800<sup>PV</sup>****PURCHASER:** \_\_\_\_\_**BORN: 07/08/23****PRICE:** \_\_\_\_\_**ID No.: 15603023U800**KINCARDINE RENEGADE R36<sup>PV</sup>BASIN RAINMAKER 4404<sup>PV</sup>  
KINCARDINE 13-304BASIN RAINMAKER 2704  
BASIN JOY 1036  
BOOROOMOOKA INSPIRED E124 (IMP AUS)  
KINCARDINE 11-29TURIROA 20R655<sup>PV</sup>TAIMATE LAZARUS L12<sup>PV</sup>  
TURIROA 17N326<sup>SV</sup>MATAURI REALITY 839  
TAIMATE 1348<sup>DV</sup>  
KAHARAU 11-864  
TURIROA 108637**FERTILITY**

MORPHOLOGY	91%
SCROTAL	42cm
DAM PERFORMANCE	1/1

**MAY 2025 TRANSTASMAN ANGUS CATTLE EVALUATION**

Dir	Dtrs	GL	B/Wt	200 Wt	400 Wt	600 Wt	Mwt	Milk	SS	DC	Cwt	EMA	Rib	Rump	RBV %	IMF%
+1.7	+1.3	-6.4	+5.3	+52	+90	+123	+75	+38	+3.0	-4.5	+66	+9.0	-1.4	-2.2	+1.0	+1.2
63%	52%	81%	81%	82%	80%	81%	77%	71%	77%	41%	68%	67%	68%	68%	60%	72%

**ACTUALS (KGS)**

07/08/23	03/04/24	30/10/24	15/03/25
35kg	262kg	526kg	725kg

Renegade son that has just kept on developing. Stood out as a calf. Good spread of data across the page.

**LOT: 5**

**TURIROA 23U810<sup>PV</sup>**

**PURCHASER:** \_\_\_\_\_

**BORN: 07/09/23**

**PRICE:** \_\_\_\_\_

**ID No.: 15603023U810**

TURIROA PRINCE 18P240 (ET)<sup>SV</sup> | GOLDWYN H817<sup>SV</sup>  
TURIROA L120 (ET)

S CHISUM 6175 (IMP USA)  
GOLDWYN 512  
TURIHAUA CRUMP E5 (ET)<sup>SV</sup>  
TURIROA 12904

TURIROA 18P428<sup>SV</sup> | TURIROA TYRANT 14843  
TURIROA 10763

S CHISUM 6175 (IMP USA)  
TURIROA 11853 (ET)  
STERN 0768  
103256 OF TURIROA



FERTILITY	
MORPHOLOGY	89%
SCROTAL	44cm
DAM PERFORMANCE	4/4

MAY 2025 TRANSTASMAN ANGUS CATTLE EVALUATION																
Dir	Dtrs	GL	B/Wt	200 Wt	400 Wt	600 Wt	Mwt	Milk	SS	DC	Cwt	EMA	Rib	Rump	RBV %	IMF%
-5.6	-1.7	+0.5	+5.1	+39	+79	+97	+79	+20	+3.5	-4.1	+41	+6.1	-0.4	-1.2	+1.1	+0.2
63%	54%	80%	81%	82%	80%	81%	78%	72%	79%	43%	69%	68%	69%	69%	61%	73%



ACTUALS (KGS)			
07/09/23	03/04/24	30/10/24	15/03/25
36kg	283kg	532kg	692kg

A deep bodied Prince son with a ton of middle on him. Will make a great station bull.

**LOT: 6****TURIROA 23U817<sup>PV</sup>****PURCHASER:** \_\_\_\_\_**BORN: 17/08/23****PRICE:** \_\_\_\_\_**ID No.: 15603023U817**

KAHARAU FURNACE Q308 <sup>SV</sup>	KAHARAU ATLANTIC 454 <sup>SV</sup>
	KAHARAU 1076

KAHARAU ATLAS 12-75
KAHARAU 12-9498
KAHARAU SAMSON 11-714
KAHARAU 12-9438

TURIROA 18P389<sup>PV</sup>

TURIROA COMPLETE 16M013 <sup>SV</sup>	MATAURI COMPLETE F010 (ET)
TURIROA L098	TURIROA 131003
	MERCHISTON INFINITY 774
	TURIROA 05439

**FERTILITY**

MORPHOLOGY	90%
SCROTAL	42cm
DAM PERFORMANCE	4/4

**MAY 2025 TRANSTASMAN ANGUS CATTLE EVALUATION**

Dir	Dtrs	GL	B/Wt	200 Wt	400 Wt	600 Wt	Mwt	Milk	SS	DC	Cwt	EMA	Rib	Rump	RBV %	IMF%
+3.1	+1.9	-6.2	+5.1	+37	+77	+99	+86	+24	+2.3	-4.0	+49	+9.2	+1.7	+2.0	+1.3	-0.1
65%	53%	81%	82%	83%	81%	82%	78%	73%	79%	41%	69%	69%	69%	70%	61%	73%

**ACTUALS (KGS)**

17/08/23	03/04/24	30/10/24	15/03/25
36kg	307kg	598kg	728kg

Another strong, grunky Furnace son here! He possesses a handy set of numbers across the page with a massive EMA, fats and RBV.

**LOT: 7****TURIROA 23U824<sup>PV</sup>****PURCHASER:** \_\_\_\_\_**BORN: 20/08/23****PRICE:** \_\_\_\_\_**ID No.: 15603023U824**

KAHARAU FURNACE Q308 <sup>SV</sup>	KAHARAU ATLANTIC 454 <sup>SV</sup>
	KAHARAU 1076

KAHARAU ATLAS 12-75	
KAHARAU 12-9498	
KAHARAU SAMSON 11-714	
KAHARAU 12-9438	

TURIROA 13967

MERCHISTON INFINITY 774	
TURIROA TYKE 09685	

TE MANIA INFINITY 04 379	
MERCHISTON MARIA 313	
KAHARAU PRESIDENT 06-432	
821 OF TURIROA	

**FERTILITY**

MORPHOLOGY	87%
SCROTAL	42cm
DAM PERFORMANCE	10/8 -2 set twins

**MAY 2025 TRANSTASMAN ANGUS CATTLE EVALUATION**

Dir	Dtrs	GL	B/Wt	200 Wt	400 Wt	600 Wt	Mwt	Milk	SS	DC	Cwt	EMA	Rib	Rump	RBV %	IMF%
+5.3	+4.8	-4.7	+4.7	+48	+79	+110	+98	+18	+2.9	-2.3	+60	+6.5	+1.4	+1.8	+0.9	-1.1
64%	53%	80%	82%	83%	81%	81%	78%	73%	79%	42%	70%	69%	69%	70%	61%	73%

**ACTUALS (KGS)**

20/08/23	03/04/24	30/10/24	15/03/25
36kg	306kg	566kg	692kg

A twin with lot 15. Both good bulls. Full brother was lot 2 at last years sale. Tidy EBV set here and a wonderful natured bull.



**LOT: 8**

**TURIROA 23U842<sup>SV</sup>**

**PURCHASER:** \_\_\_\_\_

**BORN: 27/08/23**

**PRICE:** \_\_\_\_\_

**ID No.: 15603023U842**

RATANUI AVENGER 064<sup>SV</sup>

TURIHAUA AVENGER N59 (ET)<sup>SV</sup>  
RATANUI 7003

TURIHAUA HULK K100<sup>SV</sup>  
TURIHAUA F83  
MANGAPAPA 443<sup>SV</sup>  
RATANUI 478

TURIROA 12878

TURIROA 10683  
TURIROA 09704

TURIHAUA BREAK D92  
TURIROA FAITH 471  
TURIROA CARGO 80  
TURIROA 04325



**FERTILITY**

MORPHOLOGY	93%
SCROTAL	44cm
DAM PERFORMANCE	8/9-1 not reg



**MAY 2025 TRANSTASMAN ANGUS CATTLE EVALUATION**

Dir	Dtrs	GL	B/Wt	200 Wt	400 Wt	600 Wt	Mwt	Milk	SS	DC	Cwt	EMA	Rib	Rump	RBY %	IMF%
-2.6	+2.8	-1.7	+4.9	+37	+77	+106	+99	+14	+1.0	-3.6	+51	+0.5	+1.5	+1.3	+1.1	-1.7
64%	53%	80%	82%	83%	81%	82%	78%	73%	78%	42%	69%	68%	69%	70%	61%	73%



**ACTUALS (KGS)**

27/08/23	03/04/24	30/10/24	15/03/25
36kg	310kg	580kg	754kg

First of the Avenger sons and a good one! Rock solid pedigree and great fats for the hills.

**LOT: 9****TURIROA 23U827<sup>PV</sup>****PURCHASER:** \_\_\_\_\_**BORN: 27/08/23****PRICE:** \_\_\_\_\_**ID No.: 15603023U827**

KAHARAU FURNACE Q308 <sup>SV</sup>	KAHARAU ATLANTIC 454 <sup>SV</sup>
	KAHARAU 1076

KAHARAU ATLAS 12-75	KAHARAU 12-9498
KAHARAU 12-9498	KAHARAU SAMSON 11-714
KAHARAU SAMSON 11-714	KAHARAU 12-9438
KAHARAU 12-9438	

TURIROA 14014

MERCHISTON INFINITY 774	TE MANIA INFINITY 04 379
141 OF TURIROA	MERCHISTON MARIA 313
	851 OF TURIROA
	F830 OF TURIROA

**FERTILITY**

MORPHOLOGY	89%
SCROTAL	46cm
DAM PERFORMANCE	8/8

**MAY 2025 TRANSTASMAN ANGUS CATTLE EVALUATION**

Dir	Dtrs	GL	B/Wt	200 Wt	400 Wt	600 Wt	Mwt	Milk	SS	DC	Cwt	EMA	Rib	Rump	RBY %	IMF%
-6.1	-3.5	+0.0	+7.5	+48	+86	+120	+115	+18	+4.1	-0.8	+46	+1.9	-3.2	-3.7	+1.2	-0.1
64%	53%	80%	82%	82%	81%	81%	77%	73%	78%	42%	69%	68%	69%	69%	61%	73%

**ACTUALS (KGS)**

27/08/23	03/04/24	30/10/24	15/03/25
38kg	343kg	608kg	768kg

If you want cattle that will grow fast and hit the scales hard then this is your bull. A real gentle giant.

**LOT: 10****TURIROA 23U823<sup>PV</sup>****PURCHASER:** \_\_\_\_\_**BORN: 21/08/23****PRICE:** \_\_\_\_\_**ID No.: 15603023U823**

KAHARAU FURNACE Q308 <sup>SV</sup>	KAHARAU ATLANTIC 454 <sup>SV</sup> KAHARAU 1076
------------------------------------	----------------------------------------------------

KAHARAU ATLAS 12-75 KAHARAU 12-9498 KAHARAU SAMSON 11-714 KAHARAU 12-9438
------------------------------------------------------------------------------------

TURIROA L100

TURIROA 13778 TURIROA 05431
--------------------------------

CRICKLEWOOD 178 TURIROA 04309 DANDALOO BENZ 021 ABBY 36 OF TURIROA
-----------------------------------------------------------------------------

**FERTILITY**

MORPHOLOGY	81%
SCROTAL	41cm
DAM PERFORMANCE	7/7

**MAY 2025 TRANSTASMAN ANGUS CATTLE EVALUATION**

Dir	Dtrs	GL	B/Wt	200 Wt	400 Wt	600 Wt	Mwt	Milk	SS	DC	Cwt	EMA	Rib	Rump	RBV %	IMF%
-1.3	-1.3	-2.7	+5.9	+50	+97	+137	+147	+19	+2.3	+0.4	+73	+0.6	-2.0	-2.8	+0.5	+0.2
63%	51%	80%	82%	82%	81%	81%	77%	73%	78%	39%	69%	68%	68%	69%	60%	72%

**ACTUALS (KGS)**

21/08/23	03/04/24	30/10/24	15/03/25
39kg	330kg	582kg	752kg

Similar mold to the previous lot. Massive growth for those fast growing weaners.





**LOT: 11****TURIROA 23U774<sup>PV</sup>****PURCHASER:** \_\_\_\_\_**BORN: 20/08/23****PRICE:** \_\_\_\_\_**ID No.: 15603023U774**MERCHISTON TYRANT N217<sup>SV</sup>TURIROA TYRANT 14843  
MERCHISTON DUCHESS 1031S CHISUM 6175 (IMP USA)  
TURIROA 11853 (ET)  
MERCHISTON TIMELINE 942  
MERCHISTON DUCHESS 573TURIROA 18P440<sup>SV</sup>MATAURI OUTLAW L426  
TURIROA AMY 10785MATAURI OUTLIER F031  
MATAURI 08849  
TURIHAUA BREAK D92  
AMY 70 OF TURIROA**FERTILITY**

MORPHOLOGY	82%
SCROTAL	38cm
DAM PERFORMANCE	4/4

**MAY 2025 TRANSTASMAN ANGUS CATTLE EVALUATION**

Dir	Dtrs	GL	B/Wt	200 Wt	400 Wt	600 Wt	Mwt	Milk	SS	DC	Cwt	EMA	Rib	Rump	RBY %	IMF%
-5.9	+2.2	-0.3	+5.4	+46	+88	+107	+111	+13	-0.3	-4.2	+68	-5.7	+0.9	+0.4	-0.2	+2.3
63%	53%	80%	81%	82%	80%	81%	78%	73%	78%	41%	69%	68%	68%	69%	60%	72%

**ACTUALS (KGS)**

20/08/23	03/04/24	30/10/24	15/03/25
34kg	300kg	592kg	758kg

Some very good bulls back in this guys pedigree with Chisum, Outlier and Break. A great middle on this bull!

**LOT: 12**

**TURIROA 23U816<sup>PV</sup>**

**PURCHASER:** \_\_\_\_\_

**BORN: 06/09/23**

**PRICE:** \_\_\_\_\_

**ID No.: 15603023U816**

TURIROA PRINCE 18P240 (ET)<sup>SV</sup>

GOLDWYN H817<sup>SV</sup>  
TURIROA L120 (ET)

S CHISUM 6175 (IMP USA)  
GOLDWYN 512  
TURIHAUA CRUMP E5 (ET)<sup>SV</sup>  
TURIROA 12904

TURIROA 18P385<sup>PV</sup>

TURIROA COMPLETE 16M013<sup>SV</sup>  
TURIROA L100

MATAURI COMPLETE F010 (ET)  
TURIROA 131003  
TURIROA 13778  
TURIROA 05431



**FERTILITY**

MORPHOLOGY	87%
SCROTAL	39cm
DAM PERFORMANCE	4/4

**MAY 2025 TRANSTASMAN ANGUS CATTLE EVALUATION**

Dir	Dtrs	GL	B/Wt	200 Wt	400 Wt	600 Wt	Mwt	Milk	SS	DC	Cwt	EMA	Rib	Rump	RBV %	IMF%
-0.3	+4.1	-2.2	+4.8	+45	+88	+117	+99	+22	+2.1	-5.6	+70	-0.2	+1.0	+1.6	+0.1	+0.4
64%	53%	81%	82%	82%	81%	81%	78%	72%	79%	43%	69%	68%	69%	69%	61%	73%



**ACTUALS (KGS)**

06/09/23	03/04/24	30/10/24	15/03/25
35kg	291kg	560kg	736kg

Nice Prince son here. 816 has a good outlook with strong growth, milk, DC, CW and positive fats.



0800 429 5388 / [hazlett.nz](https://hazlett.nz)

Insurance

Livestock

Agronomy

Funding

Procurement

# We are a business built on the belief that people come first

Our commitment to you is to provide quality advice and to optimise value for you at every opportunity.  
**Give us a call and we'll prove it.**

› Sam Wright 027 496 2925

› Duke Loe 021 363 755



**Hazlett**  
People Together

**LOT: 13****TURIROA 23U826<sup>PV</sup>****PURCHASER:** \_\_\_\_\_**BORN: 19/08/23****PRICE:** \_\_\_\_\_**ID No.: 15603023U826**KAHARAU FURNACE Q308<sup>SV</sup>KAHARAU ATLANTIC 454<sup>SV</sup>  
KAHARAU 1076

KAHARAU ATLAS 12-75

KAHARAU 12-9498

KAHARAU SAMSON 11-714

KAHARAU 12-9438

TURIROA 14026 (ET)

BRAVEHEART OF STERN<sup>SV</sup>  
TURIROA 05425

HIGHLANDER OF STERN

STERN 3886

003157 OF TURIROA

822 OF TURIROA

**FERTILITY**

MORPHOLOGY	79%
SCROTAL	45cm
DAM PERFORMANCE	8/8

**MAY 2025 TRANSTASMAN ANGUS CATTLE EVALUATION**

Dir	Dtrs	GL	B/Wt	200 Wt	400 Wt	600 Wt	Mwt	Milk	SS	DC	Cwt	EMA	Rib	Rump	RBY %	IMF%
+1.6	-0.8	-5.1	+4.4	+37	+66	+78	+60	+14	+3.7	-3.9	+33	+2.4	+2.0	+2.1	+0.3	-0.3
66%	56%	81%	83%	83%	81%	82%	79%	74%	79%	44%	70%	69%	70%	70%	62%	74%

**ACTUALS (KGS)**

19/08/23	03/04/24	30/10/24	15/03/25
37kg	258kg	524kg	692kg

Massive scrotal for that in-built fertility, positive fats. Another with a really strong pedigree that will guarantee top class off-spring.

**LOT: 14****TURIROA 23U805<sup>PV</sup>****PURCHASER:** \_\_\_\_\_**BORN: 20/08/23****PRICE:** \_\_\_\_\_**ID No.: 15603023U805**

KAHARAU FURNACE Q308 <sup>SV</sup>	KAHARAU ATLANTIC 454 <sup>SV</sup> KAHARAU 1076
------------------------------------	----------------------------------------------------

KAHARAU ATLAS 12-75
KAHARAU 12-9498
KAHARAU SAMSON 11-714
KAHARAU 12-9438

TURIROA 16M226ET <sup>PV</sup>	RANGATIRA ICEBREAKER 13-59 TURIROA 13968
--------------------------------	---------------------------------------------

MT MABLE THOR 660
KAHARAU 10-9091
MERCHISTON INFINITY 774
TURIROA 108591

**FERTILITY**

MORPHOLOGY	84%
SCROTAL	42cm
DAM PERFORMANCE	6/6

**MAY 2025 TRANSTASMAN ANGUS CATTLE EVALUATION**

Dir	Dtrs	GL	B/Wt	200 Wt	400 Wt	600 Wt	Mwt	Milk	SS	DC	Cwt	EMA	Rib	Rump	RBV %	IMF%
-0.9	-0.6	-6.0	+4.4	+42	+77	+100	+124	+7	+0.7	+0.4	+50	+1.5	-1.4	-1.5	+0.1	+1.8
64%	54%	81%	82%	83%	81%	82%	78%	73%	79%	41%	69%	68%	69%	70%	61%	73%

**ACTUALS (KGS)**

20/08/23	03/04/24	30/10/24	15/03/25
37kg	267kg	528kg	682kg

Length and another with great outlook. Nice bit of roundness over the lion and a handy IMF of 1.8 .

**LOT: 15****TURIROA 23U809<sup>PV</sup>****PURCHASER:** \_\_\_\_\_**BORN: 20/08/23****PRICE:** \_\_\_\_\_**ID No.: 15603023U809**KAHARAU FURNACE Q308<sup>SV</sup>KAHARAU ATLANTIC 454<sup>SV</sup>  
KAHARAU 1076

KAHARAU ATLAS 12-75

KAHARAU 12-9498

KAHARAU SAMSON 11-714

KAHARAU 12-9438

TURIROA 13967

MERCHISTON INFINITY 774  
TURIROA TYKE 09685

TE MANIA INFINITY 04 379

MERCHISTON MARIA 313

KAHARAU PRESIDENT 06-432

821 OF TURIROA

**FERTILITY**

MORPHOLOGY	92%
SCROTAL	41cm
DAM PERFORMANCE	10/8-2 set twins

**MAY 2025 TRANSTASMAN ANGUS CATTLE EVALUATION**

Dir	Dtrs	GL	B/Wt	200 Wt	400 Wt	600 Wt	Mwt	Milk	SS	DC	Cwt	EMA	Rib	Rump	RBY %	IMF%
-5.7	-1.6	-2.7	+6.0	+38	+69	+92	+69	+17	+1.1	-1.3	+41	+4.8	+3.0	+4.8	+0.8	-1.1
65%	54%	81%	82%	83%	81%	82%	78%	73%	79%	43%	70%	69%	70%	70%	62%	74%

**ACTUALS (KGS)**

20/08/23	03/04/24	30/10/24	15/03/25
35kg	283kg	524kg	686kg

A twin with lot 7. Their old dam has done a wonderful job on them both. Good EMA and fats.

**LOT: 16****TURIROA 23U795<sup>PV</sup>****PURCHASER:** \_\_\_\_\_**BORN: 19/08/23****PRICE:** \_\_\_\_\_**ID No.: 15603023U795**KAYJAY LASER R442 (ET)<sup>SV</sup>TAIMATE LASER N 22<sup>PV</sup>  
KAYJAY PEONY K117TAIMATE LAZARUS L12<sup>PV</sup>  
TAIMATE 1434<sup>SV</sup>  
WAITANGI E222  
KAYJAY PEONY 795TURIROA 20R578 (ET)<sup>SV</sup>TAIMATE LAZARUS L12<sup>PV</sup>  
TURIROA 17N309 (ET)MATAURI REALITY 839  
TAIMATE 1348<sup>DV</sup>  
ATAHUA FREEDOM 609-10  
TURIROA 14019**FERTILITY**

MORPHOLOGY	80%
SCROTAL	40cm
DAM PERFORMANCE	2 ET/2 natural

**MAY 2025 TRANSTASMAN ANGUS CATTLE EVALUATION**

Dir	Dtrs	GL	B/Wt	200 Wt	400 Wt	600 Wt	Mwt	Milk	SS	DC	Cwt	EMA	Rib	Rump	RBV %	IMF%
-1.4	+2.4	-3.0	+5.4	+49	+84	+104	+115	+3	+2.2	-5.5	+39	+1.1	+0.5	+0.3	+0.2	+1.2
68%	58%	82%	82%	84%	82%	82%	79%	75%	80%	46%	70%	70%	70%	71%	62%	74%

**ACTUALS (KGS)**

19/08/23	03/04/24	30/10/24	15/03/25
34kg	271kg	514kg	700kg

Thick as a brick and really good early growth in the EBV's. Look at the loin on him! Out of a lovely donor cow and the first of a very good run of bulls.

**LOT: 17****TURIROA 23U778 (ET) <sup>PV</sup>****PURCHASER:** \_\_\_\_\_**BORN: 16/08/23****PRICE:** \_\_\_\_\_**ID No.: 15603023U778**KAROO K12 REALIST N278 (IMP AUS) <sup>SV</sup>MILWILLAH REALITY K12 PV  
KAROO DORIS F42MATAURI REALITY 839  
MILWILLAH BARUNAH H8 SV  
ARDROSSAN EQUATOR A241 (IMP AUS)  
KAROO DORIS Y137 SVTURIROA 16M261 <sup>SV</sup>KAHARAU 11-864  
TURIROA 10763KAHARAU LANCER 699  
KAHARAU 07-8032  
STERN 0768  
103256 OF TURIROA**FERTILITY**

MORPHOLOGY	89%
SCROTAL	43cm
DAM PERFORMANCE	16 ET/5 natural

**MAY 2025 TRANSTASMAN ANGUS CATTLE EVALUATION**

Dir	Dtrs	GL	B/Wt	200 Wt	400 Wt	600 Wt	Mwt	Milk	SS	DC	Cwt	EMA	Rib	Rump	RBV %	IMF%
-8.2	-1.6	-3.7	+5.9	+49	+90	+112	+121	+9	+1.8	-4.7	+64	+3.1	-1.1	+0.6	+0.0	+2.5
68%	57%	82%	82%	83%	81%	82%	79%	75%	80%	44%	71%	70%	70%	71%	63%	74%

**ACTUALS (KGS)**

16/08/23	03/04/24	30/10/24	15/03/25
34kg	300kg	556kg	742kg

Lovely thick, deep and grunty type here with a strong set of EBV's. Could be a dark horse! His sire Karoo Realist has done a good job for us.





**LOT: 18****TURIROA 23U866<sup>PV</sup>****PURCHASER:** \_\_\_\_\_**BORN: 18/08/23****PRICE:** \_\_\_\_\_**ID No.: 15603023U866**RATANUI AVENGER 064<sup>SV</sup>TURIHAUA AVENGER N59 (ET)<sup>SV</sup>  
RATANUI 7003TURIHAUA HULK K100<sup>SV</sup>  
TURIHAUA F83  
MANGAPAPA 443<sup>SV</sup>  
RATANUI 478

TURIROA L092

TURIHAUA CRUMP E5 (ET)<sup>SV</sup>  
TURIROA 12880TURIHAUA CRUMBLE Y167  
TURIHAUA Q263  
TURIROA 10683  
TURIROA TILLY 09677**FERTILITY**

MORPHOLOGY	93%
SCROTAL	43cm
DAM PERFORMANCE	7/7

**MAY 2025 TRANSTASMAN ANGUS CATTLE EVALUATION**

Dir	Dtrs	GL	B/Wt	200 Wt	400 Wt	600 Wt	Mwt	Milk	SS	DC	Cwt	EMA	Rib	Rump	RBY %	IMF%
-0.6	-4.9	-5.0	+6.6	+49	+99	+132	+158	+6	+2.3	-4.9	+66	-0.5	+4.9	+5.4	-0.2	-0.6
66%	56%	81%	82%	83%	81%	82%	79%	73%	79%	47%	71%	70%	71%	71%	64%	75%

**ACTUALS (KGS)**

18/08/23	03/04/24	30/10/24	15/03/25
38kg	310kg	588kg	782kg

A tank! Hugh middle on him, massive fats and strong growth. This bull has a lot going for him. He will beef up any cow herd! Some of the best in behind his pedigree.



**LOT: 19****TURIROA 23U857<sup>PV</sup>****PURCHASER:** \_\_\_\_\_**BORN: 27/08/23****PRICE:** \_\_\_\_\_**ID No.: 15603023U857**RATANUI AVENGER 064<sup>SV</sup>TURIHAUA AVENGER N59 (ET)<sup>SV</sup>  
RATANUI 7003TURIHAUA HULK K100<sup>SV</sup>  
TURIHAUA F83  
MANGAPAPA 443<sup>SV</sup>  
RATANUI 478TURIROA 17N316 (ET)<sup>PV</sup>ATAHUA FREEDOM 609-10  
TURIROA 14019BRAVEHEART OF STERN<sup>SV</sup>  
ATAHUA ALICE 285-05  
S CHISUM 6175 (IMP USA)  
TURIROA 11828**FERTILITY**

MORPHOLOGY	86%
SCROTAL	38cm
DAM PERFORMANCE	5/5

**MAY 2025 TRANSTASMAN ANGUS CATTLE EVALUATION**

Dir	Dtrs	GL	B/Wt	200 Wt	400 Wt	600 Wt	Mwt	Milk	SS	DC	Cwt	EMA	Rib	Rump	RBY %	IMF%
+0.9	-0.7	-7.0	+5.6	+53	+93	+124	+111	+8	+0.9	-4.1	+61	+8.4	+2.0	+3.4	+1.4	-2.0
63%	53%	80%	81%	82%	80%	80%	77%	72%	77%	42%	68%	67%	68%	68%	60%	72%

**ACTUALS (KGS)**

27/08/23	03/04/24	30/10/24	15/03/25
39kg	335kg	584kg	772kg

Another strong Avenger with growth, big EMA and fats. Outstanding pedigree with Hulk, Mangapapa 443, Braveheart and Chisum.

**LOT: 20****TURIROA 23U850<sup>SV</sup>****PURCHASER:** \_\_\_\_\_**BORN: 21/08/23****PRICE:** \_\_\_\_\_**ID No.: 15603023U850**RATANUI AVENGER 064<sup>SV</sup>TURIHAUA AVENGER N59 (ET)<sup>SV</sup>  
RATANUI 7003TURIHAUA HULK K100<sup>SV</sup>  
TURIHAUA F83  
MANGAPAPA 443<sup>SV</sup>  
RATANUI 478

TURIROA 12890

STERN 09400  
822 OF TURIROAHIGHLANDER OF STERN  
STERN 4132  
29194 OF TE MANIA  
HARRIETT OF TURIROA**FERTILITY**

MORPHOLOGY	80%
SCROTAL	38cm
DAM PERFORMANCE	9/9

**MAY 2025 TRANSTASMAN ANGUS CATTLE EVALUATION**

Dir	Dtrs	GL	B/Wt	200 Wt	400 Wt	600 Wt	Mwt	Milk	SS	DC	Cwt	EMA	Rib	Rump	RBY %	IMF%
-10.9	-3.2	-2.0	+6.9	+37	+76	+100	+112	+6	+0.1	-4.2	+42	+1.4	+2.5	+2.4	+0.8	-0.4
63%	53%	80%	81%	82%	80%	81%	77%	72%	77%	41%	68%	67%	68%	69%	60%	72%

**ACTUALS (KGS)**

21/08/23	03/04/24	30/10/24	15/03/25
37kg	305kg	560kg	752kg

Should tick a few boxes commercially this guy. Out of a great old cow. Nice positive fats for the hills.

**LOT: 21**

**TURIROA 23U787 (ET)<sup>PV</sup>**

**PURCHASER:** \_\_\_\_\_

**BORN: 14/08/23**

**PRICE:** \_\_\_\_\_

**ID No.: 15603023U787**

MILLAH MURRAH PARATROOPER P15<sup>PV</sup>

EF COMMANDO 1366  
MILLAH MURRAH ELA M9

EF COMPLEMENT 8088  
RIVERBEND YOUNG LUCY W1470  
MILLAH MURRAH HIGHLANDER G18  
MILLAH MURRAH ELA K127

TURIROA 14044 (ET)<sup>SV</sup>

BRAVEHEART OF STERN<sup>SV</sup>  
TURIROA 05425

HIGHLANDER OF STERN  
STERN 3886  
003157 OF TURIROA  
822 OF TURIROA



**FERTILITY**

MORPHOLOGY	81%
SCROTAL	46cm
DAM PERFORMANCE	18 ET/6 natural

**MAY 2025 TRANSTASMAN ANGUS CATTLE EVALUATION**

Dir	Dtrs	GL	B/Wt	200 Wt	400 Wt	600 Wt	Mwt	Milk	SS	DC	Cwt	EMA	Rib	Rump	RBV %	IMF%
+2.8	+2.0	-7.3	+4.0	+52	+96	+129	+121	+16	+2.7	-5.0	+78	+6.8	+3.1	+4.7	-0.6	+3.7
71%	64%	83%	83%	84%	82%	83%	80%	77%	80%	50%	73%	72%	72%	72%	66%	75%



**ACTUALS (KGS)**

14/08/23	03/04/24	30/10/24	15/03/25
36kg	344kg	612kg	786kg

Last of the Paratroopers. Huge loin and hindquarter! Check out his data set. Very strong right across the page. Massive IMF of 3.6.

**LOT: 22****TURIROA 23U849<sup>PV</sup>****PURCHASER:** \_\_\_\_\_**BORN: 12/09/23****PRICE:** \_\_\_\_\_**ID No.: 15603023U849**TURIROA PRINCE 18P240 (ET)<sup>SV</sup>GOLDWYN H817<sup>SV</sup>  
TURIROA L120 (ET)S CHISUM 6175 (IMP USA)  
GOLDWYN 512  
TURIHAUA CRUMP E5 (ET)<sup>SV</sup>  
TURIROA 12904TURIROA 17N289<sup>PV</sup>TARANGOWER 15003  
TURIROA 13967TURIROA RAMBLE 11541 (ET)  
TARANGOWER 708  
MERCHISTON INFINITY 774  
TURIROA TYKE 09685**FERTILITY**

MORPHOLOGY	86%
SCROTAL	40cm
DAM PERFORMANCE	5/4-1 set twins

**MAY 2025 TRANSTASMAN ANGUS CATTLE EVALUATION**

Dir	Dtrs	GL	B/Wt	200 Wt	400 Wt	600 Wt	Mwt	Milk	SS	DC	Cwt	EMA	Rib	Rump	RBV %	IMF%
-1.9	-2.8	-4.5	+5.7	+41	+85	+111	+109	+16	+1.3	-5.1	+55	+3.9	+1.1	+1.7	+1.2	-0.5
63%	53%	80%	81%	82%	80%	81%	77%	72%	78%	42%	69%	68%	68%	69%	61%	72%

**ACTUALS (KGS)**

12/09/23	03/04/24	30/10/24	15/03/25
37kg	285kg	540kg	726kg

Lovely Prince son that will catch the eye. 849 possess a lot of the qualities we strive to keep in the herd.



**LOT: 23****TURIROA 23U867<sup>SV</sup>****PURCHASER:** \_\_\_\_\_**BORN: 11/09/23****PRICE:** \_\_\_\_\_**ID No.: 15603023U867**RATANUI AVENGER 064<sup>SV</sup>TURIHAUA AVENGER N59 (ET)<sup>SV</sup>  
RATANUI 7003TURIHAUA HULK K100<sup>SV</sup>  
TURIHAUA F83  
MANGAPAPA 443<sup>SV</sup>  
RATANUI 478

TURIROA L116

MERCHISTON INFINITY 774  
TURIROA 11819TE MANIA INFINITY 04 379  
MERCHISTON MARIA 313  
CRICKLEWOOD 178  
TURIROA 04371**FERTILITY**

MORPHOLOGY	89%
SCROTAL	40cm
DAM PERFORMANCE	5/6-1 not reg

**MAY 2025 TRANSTASMAN ANGUS CATTLE EVALUATION**

Dir	Dtrs	GL	B/Wt	200 Wt	400 Wt	600 Wt	Mwt	Milk	SS	DC	Cwt	EMA	Rib	Rump	RBY %	IMF%
-4.5	+2.6	-6.0	+6.5	+45	+80	+112	+123	+5	+0.9	-4.4	+54	+6.7	+1.2	+0.7	+1.9	-2.6
62%	52%	79%	81%	82%	80%	80%	77%	71%	77%	42%	68%	67%	68%	68%	60%	71%

**ACTUALS (KGS)**

11/09/23	03/04/24	30/10/24	15/03/25
35kg	280kg	510kg	724kg

Another smart Avenger son. 867 has good GL, EMA, Fats and RBY. Well worth a few ticks.

**LOT: 24****TURIROA 23U861<sup>SV</sup>****PURCHASER:** \_\_\_\_\_**BORN: 22/08/23****PRICE:** \_\_\_\_\_**ID No.: 15603023U861**RATANUI AVENGER 064<sup>SV</sup>TURIHAUA AVENGER N59 (ET)<sup>SV</sup>  
RATANUI 7003TURIHAUA HULK K100<sup>SV</sup>  
TURIHAUA F83  
MANGAPAPA 443<sup>SV</sup>  
RATANUI 478

TURIROA 17N342

TURIROA MAGNET L951  
TURIROA 10781CRICKLEWOOD 178  
TURIROA 10745 (ET)  
TURIHAUA BREAK D92  
103 OF TURIROA**FERTILITY**

MORPHOLOGY	87%
SCROTAL	39cm
DAM PERFORMANCE	3 ET/5 natural

**MAY 2025 TRANSTASMAN ANGUS CATTLE EVALUATION**

Dir	Dtrs	GL	B/Wt	200 Wt	400 Wt	600 Wt	Mwt	Milk	SS	DC	Cwt	EMA	Rib	Rump	RBV %	IMF%
-17.2	-5.5	-0.2	+10.1	+45	+82	+115	+112	+11	+1.0	-2.4	+49	+6.4	+2.0	+2.0	+1.2	-0.1
64%	53%	80%	82%	82%	80%	81%	78%	72%	78%	42%	69%	68%	69%	69%	61%	73%

**ACTUALS (KGS)**

22/08/23	03/04/24	30/10/24	15/03/25
37kg	315kg	570kg	760kg

Powerful, thick and deep. The type you cant break. Just how we like them. Suitable for cows.





## LIVESTOCK & AGRIBUSINESS CONSULTANTS

### GISBORNE:

Rob Fergus      027 449 6007  
Deano Brensell   027 863 8923  
Luke Bates      027 421 1653

### WAIROA:

Daryl Fergus    027 209 2787  
Ross Mitchell   027 404 8965

### ENVIRONMENTAL SOLUTIONS CONSULTANT:

Tim Petro      027 339 0400

---

### OFFICE:

[admin@fergusrural.co.nz](mailto:admin@fergusrural.co.nz)

**[www.fergusrural.co.nz](http://www.fergusrural.co.nz)**



---

*L to R: Ross Mitchell, Daryl Fergus, Rob Fergus, Tim Petro,  
Luke Bates, Deano Brensell*



**LOT: 25****TURIROA 23U782 (ET)<sup>PV</sup>****PURCHASER:** \_\_\_\_\_**BORN: 17/08/23****PRICE:** \_\_\_\_\_**ID No.: 15603023U782**KAROO K12 REALIST N278 (IMP AUS)<sup>SV</sup>MILWILLAH REALITY K12 PV  
KAROO DORIS F42MATAURI REALITY 839  
MILWILLAH BARUNAH H8 SV  
ARDROSSAN EQUATOR A241 (IMP AUS)  
KAROO DORIS Y137 SVTURIROA 16M268<sup>SV</sup>MATAURI COMPLETE F010 (ET)  
TURIROA FERN 460SUMMITCREST COMPLETE 1P55 (IMP USA)  
MATAURI 07776  
UNITY 268 OF ELGIN  
107 OF TURIROA**FERTILITY**

MORPHOLOGY	79%
SCROTAL	43cm
DAM PERFORMANCE	9 ET/4 natural

**MAY 2025 TRANSTASMAN ANGUS CATTLE EVALUATION**

Dir	Dtrs	GL	B/Wt	200 Wt	400 Wt	600 Wt	Mwt	Milk	SS	DC	Cwt	EMA	Rib	Rump	RBV %	IMF%
-6.6	+5.9	-1.1	+5.4	+48	+83	+114	+97	+12	+1.3	-3.7	+63	+3.4	+0.8	+2.1	+0.7	+0.1
67%	57%	82%	82%	83%	81%	82%	79%	75%	79%	43%	70%	70%	70%	70%	62%	73%

**ACTUALS (KGS)**

17/08/23	03/04/24	30/10/24	15/03/25
34kg	290kg	550kg	725kg

A great bodied bull with a nice back on him. By the Realist bull who did a good job here.

**LOT: 26**

**TURIROA 23U847<sup>PV</sup>**

**PURCHASER:** \_\_\_\_\_

**BORN: 05/09/23**

**PRICE:** \_\_\_\_\_

**ID No.: 15603023U847**

TURIROA NITRO 17N122<sup>SV</sup>

ATAHUA FREEDOM 609-10  
TURIROA 14002

BRAVEHEART OF STERN<sup>SV</sup>  
ATAHUA ALICE 285-05  
MERCHISTON INFINITY 774  
TURIROA 07576

TURIROA 18P370<sup>PV</sup>

TURIROA COMPLETE 16M013<sup>SV</sup>  
TURIROA L141

MATAURI COMPLETE F010 (ET)  
TURIROA 131003  
MATAURI COMPLETE F010 (ET)  
GOLDWYN H617



**FERTILITY**

MORPHOLOGY	90%
SCROTAL	43cm
DAM PERFORMANCE	4/4



**MAY 2025 TRANSTASMAN ANGUS CATTLE EVALUATION**

Dir	Dtrs	GL	B/Wt	200 Wt	400 Wt	600 Wt	Mwt	Milk	SS	DC	Cwt	EMA	Rib	Rump	RBV %	IMF%
-2.4	-2.6	-4.9	+5.9	+42	+75	+94	+100	+15	+2.9	-1.5	+37	+10.2	-1.1	-1.1	+1.6	+1.1
64%	53%	80%	82%	82%	81%	81%	78%	73%	78%	41%	69%	68%	69%	69%	61%	72%



**ACTUALS (KGS)**

05/09/23	03/04/24	30/10/24	15/03/25
40kg	274kg	530kg	720kg

Massive EMA at 10!..A bull that is on the move and starting to hit his straps now.

# LOT 1

TURIROA 23U808 (PV)



# LOT 3

TURIROA 23U814 (PV)



# LOT 4

TURIROA 23U800 (PV)



# LOT 5

TURIROA 23U810 (PV)



# LOT 7

TURIROA 23U824 (PV)





# LOT 9

TURIROA 23U827 (PV)





# LOT 11

TURIROA 23U774 (PV)



# LOT 12

TURIROA 23U816 (PV)



# LOT 16

TURIROA 23U795 (PV)



# LOT 17

TURIROA 23U778 (ET) (PV)



# LOT 18

TURIROA 23U866 (PV)



# LOT 19

TURIROA 23U857 (PV)





# LOT 20

TURIROA 23U850 (SV)



# LOT 23

TURIROA 23U867 (SV)





# LOT 24

TURIROA 23U861 (SV)



# LOT 25

TURIROA 23U782 (ET) (PV)



# LOT 32

TURIROA 23U844 (PV)



# LOT 35

TURIROA 23U806 (PV)



**LOT 37**

**TURIROA 23U828 (PV)**





**LOT 40**

**TURIROA 23U818 (PV)**



# LOT 41

TURIROA 23U820 (PV)



**LOT: 27****TURIROA 23U784<sup>PV</sup>****PURCHASER:** \_\_\_\_\_**BORN: 06/09/23****PRICE:** \_\_\_\_\_**ID No.: 15603023U784**TURIROA PRINCE 18P240 (ET)<sup>SV</sup>GOLDWYN H817<sup>SV</sup>  
TURIROA L120 (ET)S CHISUM 6175 (IMP USA)  
GOLDWYN 512  
TURIHAUA CRUMP E5 (ET)<sup>SV</sup>  
TURIROA 12904TURIROA 18P448<sup>SV</sup>TURIROA TYRANT 14843  
TURIROA 12900S CHISUM 6175 (IMP USA)  
TURIROA 11853 (ET)  
STERN 0768  
TURIROA TULIP 459**FERTILITY**

MORPHOLOGY	85%
SCROTAL	42cm
DAM PERFORMANCE	3/3

**MAY 2025 TRANSTASMAN ANGUS CATTLE EVALUATION**

Dir	Dtrs	GL	B/Wt	200 Wt	400 Wt	600 Wt	Mwt	Milk	SS	DC	Cwt	EMA	Rib	Rump	RBV %	IMF%
-8.3	-9.4	+0.9	+7.9	+47	+84	+111	+138	+16	+2.1	-4.4	+50	+4.2	-2.8	-3.2	+2.2	-0.6
65%	55%	81%	82%	83%	81%	82%	79%	74%	79%	44%	70%	70%	70%	70%	62%	74%

**ACTUALS (KGS)**

06/09/23	03/04/24	30/10/24	15/03/25
37kg	277kg	530kg	740kg

A quiet, easy going bull. One of the last Prince sons on offer. Should develop into a nice sire.



**LOT: 28****TURIROA 23U834<sup>PV</sup>****PURCHASER:** \_\_\_\_\_**BORN: 25/08/23****PRICE:** \_\_\_\_\_**ID No.: 15603023U834**RATANUI AVENGER 064<sup>SV</sup>TURIHAUA AVENGER N59 (ET)<sup>SV</sup>  
RATANUI 7003TURIHAUA HULK K100<sup>SV</sup>  
TURIHAUA F83  
MANGAPAPA 443<sup>SV</sup>  
RATANUI 478

TURIROA 17N366

TURIROA L992  
272OF KAWATIRIMERCHISTON INFINITY 774  
TURIROA 11868  
225 OF KAWATIRI  
173 OF KAWATIRI**FERTILITY**

MORPHOLOGY	88%
SCROTAL	42cm
DAM PERFORMANCE	5/5

**MAY 2025 TRANSTASMAN ANGUS CATTLE EVALUATION**

Dir	Dtrs	GL	B/Wt	200 Wt	400 Wt	600 Wt	Mwt	Milk	SS	DC	Cwt	EMA	Rib	Rump	RBV %	IMF%
-5.5	-4.8	-4.2	+6.2	+47	+80	+107	+122	+3	+0.8	-1.2	+43	+6.9	-0.4	+0.9	+1.4	-0.3
62%	51%	80%	81%	82%	80%	81%	77%	72%	77%	39%	68%	67%	67%	68%	59%	72%

**ACTUALS (KGS)**

25/08/23	03/04/24	30/10/24	15/03/25
36kg	276kg	524kg	714kg

Another good Avenger son. Avenger has crossed well with our cows. A lovely station bull.

**LOT: 29**

**TURIROA 23U835<sup>SV</sup>**

**PURCHASER:** \_\_\_\_\_

**BORN: 01/09/23**

**PRICE:** \_\_\_\_\_

**ID No.: 15603023U835**

MERCHISTON TYRANT N217<sup>SV</sup>

TURIROA TYRANT 14843  
MERCHISTON DUCHESS 1031

S CHISUM 6175 (IMP USA)  
TURIROA 11853 (ET)  
MERCHISTON TIMELINE 942  
MERCHISTON DUCHESS 573

TURIROA 14070

TANGIHAU 10 - 100  
OTOKA AILSA 8110

WOODBANK 7147  
TANGIHAU 532  
OTOKA ROYAL 119  
OTOKA AILSA 358



**FERTILITY**

MORPHOLOGY	92%
SCROTAL	41cm
DAM PERFORMANCE	8/8

**MAY 2025 TRANSTASMAN ANGUS CATTLE EVALUATION**

Dir	Dtrs	GL	B/Wt	200 Wt	400 Wt	600 Wt	Mwt	Milk	SS	DC	Cwt	EMA	Rib	Rump	RBV %	IMF%
-0.8	+5.8	+0.3	+6.0	+43	+81	+113	+124	+21	+1.8	-2.1	+60	+0.6	-0.9	+0.8	+0.7	-1.6
63%	52%	80%	82%	82%	80%	81%	78%	73%	78%	39%	69%	67%	68%	69%	60%	72%



**ACTUALS (KGS)**

01/09/23	03/04/24	30/10/24	15/03/25
39kg	270kg	556kg	738kg

A useful station bull here.



# What you put in today will pay dividends tomorrow.

## Livestock Team

**DAVID COULTER** | 027 499-5223  
Business Segment Manager

**PAUL McKEE** | 027 449-8441  
Northern North Island

**DAN GARDNER** | 027 226-1440  
Southern North Island

**STEVE ROONEY** | 027 432-1789  
Northern South Island

**HAMISH McKENZIE** | 027 435-8645  
Southern South Island



Ensure your stock become future high producers through improved health, growth and energy. Talk to your local territory manager about health management for maximum results.

[futureproducers.co.nz](https://futureproducers.co.nz)



**PROUDLY AVAILABLE FROM YOUR LOCAL PARTICIPATING VETERINARY CLINIC**

See product labels for full claim details and directions for use. ECLIPSE® & MARKS-MIN® are registered trademarks of the Boehringer Ingelheim Group. Registered pursuant to the ACVM Act 1997, Nos. A011151, A011687. ©Copyright 2023 Boehringer Ingelheim Animal Health New Zealand Limited. All rights reserved. NZ-BOV-0008-2023.

**LOT: 30****TURIROA 23U853<sup>PV</sup>****PURCHASER:** \_\_\_\_\_**BORN: 16/08/23****PRICE:** \_\_\_\_\_**ID No.: 15603023U853**RATANUI AVENGER 064<sup>SV</sup>TURIHAUA AVENGER N59 (ET)<sup>SV</sup>  
RATANUI 7003TURIHAUA HULK K100<sup>SV</sup>  
TURIHAUA F83  
MANGAPAPA 443<sup>SV</sup>  
RATANUI 478TURIROA 18P379 (ET)<sup>SV</sup>MERCHISTON STOKER 350  
TURIROA 12904STOKMAN DASH G89  
MERCHISTON BLACKBIRD 972  
STERN 0768  
TURIROA 07532**FERTILITY**

MORPHOLOGY	81%
SCROTAL	42cm
DAM PERFORMANCE	4/4

**MAY 2025 TRANSTASMAN ANGUS CATTLE EVALUATION**

Dir	Dtrs	GL	B/Wt	200 Wt	400 Wt	600 Wt	Mwt	Milk	SS	DC	Cwt	EMA	Rib	Rump	RBV %	IMF%
+0.1	+5.8	+0.7	+4.7	+33	+75	+94	+98	+14	+3.5	-4.6	+37	+10.2	+1.6	+1.0	+2.2	-1.2
63%	52%	80%	81%	82%	80%	80%	77%	71%	77%	41%	68%	67%	68%	68%	60%	72%

**ACTUALS (KGS)**

16/08/23	03/04/24	30/10/24	15/03/25
38kg	318kg	570kg	724kg

These Avengers are all of a type. One of the biggest EMA's in the offering at 10! Positive fats as well.

**LOT: 31****TURIROA 23U843<sup>PV</sup>****PURCHASER:** \_\_\_\_\_**BORN: 20/08/23****PRICE:** \_\_\_\_\_**ID No.: 15603023U843**TURIROA NITRO 17N122<sup>SV</sup>ATAHUA FREEDOM 609-10  
TURIROA 14002BRAVEHEART OF STERN<sup>SV</sup>  
ATAHUA ALICE 285-05  
MERCHISTON INFINITY 774  
TURIROA 07576TURIROA 16M239<sup>SV</sup>CRICKLEWOOD H60  
TURIROA 10745 (ET)TE MANIA 09 492  
WAITERENUI MAID E161  
BRAVEHEART OF STERN<sup>SV</sup>  
TURIROA 07532**FERTILITY**

MORPHOLOGY	82%
SCROTAL	41cm
DAM PERFORMANCE	6/6

**MAY 2025 TRANSTASMAN ANGUS CATTLE EVALUATION**

Dir	Dtrs	GL	B/Wt	200 Wt	400 Wt	600 Wt	Mwt	Milk	SS	DC	Cwt	EMA	Rib	Rump	RBY %	IMF%
-0.9	-3.5	-2.3	+5.0	+35	+72	+88	+76	+16	+2.7	-1.2	+37	+8.3	-1.6	-1.4	+1.2	+2.0
65%	55%	81%	82%	83%	81%	82%	79%	74%	79%	43%	70%	69%	70%	71%	62%	74%

**ACTUALS (KGS)**

20/08/23	03/04/24	30/10/24	15/03/25
38kg	314kg	554kg	722kg

Tidy station bull with two crosses of Braveheart in behind him. Big EMA and some IMF.

**LOT: 32**

**TURIROA 23U844<sup>PV</sup>**

**PURCHASER:** \_\_\_\_\_

**BORN: 04/10/23**

**PRICE:** \_\_\_\_\_

**ID No.: 15603023U844**

TURIROA PRINCE 18P240 (ET)<sup>SV</sup>

GOLDWYN H817<sup>SV</sup>  
TURIROA L120 (ET)

S CHISUM 6175 (IMP USA)  
GOLDWYN 512  
TURIHAUA CRUMP E5 (ET)<sup>SV</sup>  
TURIROA 12904

TURIROA 19Q535<sup>PV</sup>

TAIMATE LATITUDE L7<sup>SV</sup>  
TURIROA 14074

MATAURI REALITY 839  
TAIMATE 1380  
MERCHISTON OUTLOOK 179  
TURIROA 04295



**FERTILITY**

MORPHOLOGY	84%
SCROTAL	46cm
DAM PERFORMANCE	3/3

**MAY 2025 TRANSTASMAN ANGUS CATTLE EVALUATION**

Dir	Dtrs	GL	B/Wt	200 Wt	400 Wt	600 Wt	Mwt	Milk	SS	DC	Cwt	EMA	Rib	Rump	RBY %	IMF%
-2.7	+2.1	+0.2	+4.8	+39	+76	+89	+63	+16	+3.2	-3.7	+52	+1.0	+4.0	+6.7	-0.2	+0.6
63%	53%	80%	81%	82%	80%	81%	78%	72%	78%	42%	68%	68%	68%	69%	60%	73%



**ACTUALS (KGS)**

04/10/23	03/04/24	30/10/24	15/03/25
41kg	260kg	522kg	674kg

Some very thick and meaty bulls in behind this chap. Massive scrotal at 46cm and huge fats.



PROUD TO  
SUPPORT OUR  
**LOCAL BULL  
BREEDERS**

**CONTACT OUR LOCAL  
TEAM TO DISCUSS YOUR NEEDS**



VISIT [WWW.CARRFIELDSLIVESTOCK.CO.NZ](http://WWW.CARRFIELDSLIVESTOCK.CO.NZ)

**Simon Lourie**  
Livestock Agent  
027 652 7100

**Glen Forrest**  
Livestock Agent  
021 228 2535

**LOT: 33****TURIROA 23U840<sup>PV</sup>****PURCHASER:** \_\_\_\_\_**BORN: 10/08/23****PRICE:** \_\_\_\_\_**ID No.: 15603023U840**TURIROA NITRO 17N122<sup>SV</sup>ATAHUA FREEDOM 609-10  
TURIROA 14002BRAVEHEART OF STERN<sup>SV</sup>  
ATAHUA ALICE 285-05  
MERCHISTON INFINITY 774  
TURIROA 07576

TURIROA 14050

MERCHISTON OUTLOOK 179  
OTOKA AILSA 629MERCHISTON VISION 564  
MERCHISTON KAY 387  
TURIHAUA JIM X3  
OTOKA AILSA 444**FERTILITY**

MORPHOLOGY	88%
SCROTAL	43cm
DAM PERFORMANCE	9/8-1 set twins

**MAY 2025 TRANSTASMAN ANGUS CATTLE EVALUATION**

Dir	Dtrs	GL	B/Wt	200 Wt	400 Wt	600 Wt	Mwt	Milk	SS	DC	Cwt	EMA	Rib	Rump	RBV %	IMF%
-7.4	-6.2	-0.7	+5.0	+33	+63	+87	+96	+18	+3.4	-0.4	+28	+5.8	-0.3	+0.4	+0.6	+0.9
64%	53%	80%	82%	82%	80%	81%	77%	73%	78%	42%	69%	68%	69%	69%	61%	73%

**ACTUALS (KGS)**

10/08/23	03/04/24	30/10/24	15/03/25
38kg	310kg	562kg	734kg

Very good in the SS, EMA and docility. His sire Turiroa Nitro has been a very consistent breeder for us.





**LOT: 34****TURIROA 23U788 (ET)<sup>PV</sup>****PURCHASER:** \_\_\_\_\_**BORN: 15/08/23****PRICE:** \_\_\_\_\_**ID No.: 15603023U788**KAROO K12 REALIST N278 (IMP AUS)<sup>SV</sup>MILWILLAH REALITY K12 PV  
KAROO DORIS F42MATAURI REALITY 839  
MILWILLAH BARUNAH H8 SV  
ARDROSSAN EQUATOR A241 (IMP AUS)  
KAROO DORIS Y137 SVTURIROA 16M261<sup>SV</sup>KAHARAU 11-864  
TURIROA 10763KAHARAU LANCER 699  
KAHARAU 07-8032  
STERN 0768  
103256 OF TURIROA**FERTILITY**

MORPHOLOGY	86%
SCROTAL	43cm
DAM PERFORMANCE	16 ET/5 natural

**MAY 2025 TRANSTASMAN ANGUS CATTLE EVALUATION**

Dir	Dtrs	GL	B/Wt	200 Wt	400 Wt	600 Wt	Mwt	Milk	SS	DC	Cwt	EMA	Rib	Rump	RBY %	IMF%
-5.2	-2.8	-2.9	+5.6	+44	+87	+114	+104	+18	+1.5	-3.2	+72	+3.3	-1.3	+0.4	-0.1	+2.5
68%	56%	82%	82%	83%	81%	82%	79%	75%	80%	43%	70%	70%	70%	71%	63%	73%

**ACTUALS (KGS)**

15/08/23	03/04/24	30/10/24	15/03/25
35kg	266kg	550kg	710kg

Another of the Realist sons here. Good IMF at 2.5. A very clean shouldered bull with a great outlook.



**LOT: 35****TURIROA 23U806<sup>PV</sup>****PURCHASER:** \_\_\_\_\_**BORN: 12/09/23****PRICE:** \_\_\_\_\_**ID No.: 15603023U806**

KAHARAU FURNACE Q308 <sup>SV</sup>	KAHARAU ATLANTIC 454 <sup>SV</sup>
	KAHARAU 1076

KAHARAU ATLAS 12-75	
KAHARAU 12-9498	
KAHARAU SAMSON 11-714	
KAHARAU 12-9438	

TURIROA L140

KAYJAY QUATRO H491	
TURIROA 11808	

TE MANIA QUANTUM 09 490	
KAYJAY SHIAN 216	
CRICKLEWOOD 178	
141 OF TURIROA	

**FERTILITY**

MORPHOLOGY	81%
SCROTAL	39cm
DAM PERFORMANCE	7/7

**MAY 2025 TRANSTASMAN ANGUS CATTLE EVALUATION**

Dir	Dtrs	GL	B/Wt	200 Wt	400 Wt	600 Wt	Mwt	Milk	SS	DC	Cwt	EMA	Rib	Rump	RBV %	IMF%
-6.0	+2.0	+1.2	+6.4	+42	+71	+94	+109	+8	+0.7	-0.3	+36	+5.2	-1.1	-3.0	+1.7	-1.1
64%	52%	80%	82%	83%	81%	82%	78%	73%	78%	40%	69%	68%	69%	69%	61%	73%

**ACTUALS (KGS)**

12/09/23	03/04/24	30/10/24	15/03/25
36kg	263kg	506kg	676kg

Nuggetty station bull with a good loin on him.



**LOT: 36****TURIROA 23U845<sup>PV</sup>****PURCHASER:** \_\_\_\_\_**BORN: 26/08/23****PRICE:** \_\_\_\_\_**ID No.: 15603023U845**TURIROA NITRO 17N122<sup>SV</sup>ATAHUA FREEDOM 609-10  
TURIROA 14002BRAVEHEART OF STERN<sup>SV</sup>  
ATAHUA ALICE 285-05  
MERCHISTON INFINITY 774  
TURIROA 07576TURIROA 18P378 (ET)<sup>PV</sup>GOLDWYN H817<sup>SV</sup>  
TURIROA L098S CHISUM 6175 (IMP USA)  
GOLDWYN 512  
MERCHISTON INFINITY 774  
TURIROA 05439**FERTILITY**

MORPHOLOGY	88%
SCROTAL	40cm
DAM PERFORMANCE	5/4 -1 set twins

**MAY 2025 TRANSTASMAN ANGUS CATTLE EVALUATION**

Dir	Dtrs	GL	B/Wt	200 Wt	400 Wt	600 Wt	Mwt	Milk	SS	DC	Cwt	EMA	Rib	Rump	RBV %	IMF%
-0.6	-0.1	-3.4	+5.3	+42	+80	+100	+96	+10	+2.2	-2.4	+38	+8.2	-3.0	-2.1	+1.9	-0.2
65%	55%	81%	82%	83%	81%	81%	78%	74%	79%	44%	70%	69%	69%	70%	62%	74%

**ACTUALS (KGS)**

26/08/23	03/04/24	30/10/24	15/03/25
37kg	257kg	528kg	676kg

On the move again now after he fell out with his mates. Should develop into a useful station bull.



***Monitor them with Tru-Test.***

***Contain them with Speedrite.***

***Whether you're weighing your best breeding stock or keeping them right where you want them, Tru-Test and Speedrite have you covered.***

**Power you can count on. Control you've never had.**



**The World's Most Powerful Energizer, Speedrite 86000W**  
gives you total control over your fencing.

**DATAMARS**  
***Livestock.***



***From fencing to weighing, trust Datamars Livestock – powering the tools behind serious farming.***

**LOT: 37****TURIROA 23U828<sup>PV</sup>****PURCHASER:** \_\_\_\_\_**BORN: 20/08/23****PRICE:** \_\_\_\_\_**ID No.: 15603023U828**RATANUI AVENGER 064<sup>SV</sup>TURIHAUA AVENGER N59 (ET)<sup>SV</sup>  
RATANUI 7003TURIHAUA HULK K100<sup>SV</sup>  
TURIHAUA F83  
MANGAPAPA 443<sup>SV</sup>  
RATANUI 478TURIROA 17N320<sup>SV</sup>TURIROA L992  
TURIROA TOOTSIE 09669MERCHISTON INFINITY 774  
TURIROA 11868  
16/06 OF MANGARATA  
B1251 OF KENHARDT**FERTILITY**

MORPHOLOGY	93%
SCROTAL	38cm
DAM PERFORMANCE	4/4

**MAY 2025 TRANSTASMAN ANGUS CATTLE EVALUATION**

Dir	Dtrs	GL	B/Wt	200 Wt	400 Wt	600 Wt	Mwt	Milk	SS	DC	Cwt	EMA	Rib	Rump	RBY %	IMF%
-8.8	-2.4	-0.9	+7.2	+36	+65	+91	+91	+6	+1.0	-2.3	+34	+4.7	+1.3	+1.8	+1.5	-0.7
62%	52%	80%	81%	82%	80%	81%	77%	71%	77%	40%	68%	67%	68%	68%	60%	72%

**ACTUALS (KGS)**

20/08/23	03/04/24	30/10/24	15/03/25
37kg	271kg	526kg	674kg

Another of these impressive Avenger sons. Strong fats.

**LOT: 38****TURIROA 23U838<sup>PV</sup>****PURCHASER:** \_\_\_\_\_**BORN: 10/08/23****PRICE:** \_\_\_\_\_**ID No.: 15603023U838**TURIROA PRINCE 18P240 (ET)<sup>SV</sup>GOLDWYN H817<sup>SV</sup>  
TURIROA L120 (ET)S CHISUM 6175 (IMP USA)  
GOLDWYN 512  
TURIHAUA CRUMP E5 (ET)<sup>SV</sup>  
TURIROA 12904TURIROA 16M262<sup>SV</sup>TURIROA 13778  
TURIROA 10803CRICKLEWOOD 178  
TURIROA 04309  
TURIROA CARGO 80  
TURIROA 04295**FERTILITY**

MORPHOLOGY	94%
SCROTAL	41cm
DAM PERFORMANCE	6/6

**MAY 2025 TRANSTASMAN ANGUS CATTLE EVALUATION**

Dir	Dtrs	GL	B/Wt	200 Wt	400 Wt	600 Wt	Mwt	Milk	SS	DC	Cwt	EMA	Rib	Rump	RBV %	IMF%
-1.2	-2.4	-4.1	+5.1	+35	+73	+88	+71	+14	+0.0	-1.6	+36	+1.9	-0.7	+0.9	+1.6	-0.9
63%	52%	79%	81%	82%	80%	81%	78%	73%	77%	41%	69%	67%	68%	69%	60%	72%

**ACTUALS (KGS)**

10/08/23	03/04/24	30/10/24	15/03/25
40kg	295kg	552kg	670kg

The Price sons are all of a type. They make great station bulls.



**LOT: 39****TURIROA 23U802<sup>PV</sup>****PURCHASER:** \_\_\_\_\_**BORN: 23/08/23****PRICE:** \_\_\_\_\_**ID No.: 15603023U802**

TURIROA TOUGHNUT 21S634<sup>PV</sup> | ATAHUA TOUGHNUT 378-18<sup>PV</sup>  
 TURIROA 17N283<sup>PV</sup>

TE MANIA 15380  
 ATAHUA QUEST 231-14  
 ATAHUA FREEDOM 609-10  
 TURIROA 14040

RANGATIRA 19-1630<sup>PV</sup> | KAHARAU OUTLANDER 632<sup>SV</sup>  
 RANGATIRA 161155<sup>SV</sup>

BRAVEHEART OF STERN<sup>SV</sup>  
 KAHARAU 09-8840  
 WHENUAPAPA CRUMBLE 8-10<sup>SV</sup>  
 RANGATIRA 13-178

**FERTILITY**

MORPHOLOGY	86%
SCROTAL	43cm
DAM PERFORMANCE	3/3

**MAY 2025 TRANSTASMAN ANGUS CATTLE EVALUATION**

Dir	Dtrs	GL	B/Wt	200 Wt	400 Wt	600 Wt	Mwt	Milk	SS	DC	Cwt	EMA	Rib	Rump	RBV %	IMF%
+5.8	-0.3	-7.4	+2.8	+28	+61	+75	+64	+12	+1.9	-4.1	+30	+7.5	+3.8	+5.3	+0.1	+2.0
63%	53%	80%	81%	82%	80%	80%	77%	71%	78%	40%	68%	67%	67%	68%	59%	72%

**ACTUALS (KGS)**

23/08/23	03/04/24	30/10/24	15/03/25
28kg	280kg	518kg	654kg

Good spread of data here! Suitable for heifer mating. We purchased his dam at the Rangatira dispersal. A lovely young matron.



**LOT: 40**

**TURIROA 23U818<sup>PV</sup>**

**PURCHASER:** \_\_\_\_\_

**BORN: 24/08/23**

**PRICE:** \_\_\_\_\_

**ID No.: 15603023U818**

KAHARAU FURNACE Q308<sup>SV</sup> | KAHARAU ATLANTIC 454<sup>SV</sup>  
KAHARAU 1076

KAHARAU ATLAS 12-75  
KAHARAU 12-9498  
KAHARAU SAMSON 11-714  
KAHARAU 12-9438

TURIROA 14055

CRICKLEWOOD 178  
TURIROA 10790

TURIROA EMPEROR 04227  
CRICKLEWOOD 703  
TURIROA CARGO 80  
103263 OF TURIROA



**FERTILITY**

MORPHOLOGY	78%
SCROTAL	40cm
DAM PERFORMANCE	2 ET/7 natural



**MAY 2025 TRANSTASMAN ANGUS CATTLE EVALUATION**

Dir	Dtrs	GL	B/Wt	200 Wt	400 Wt	600 Wt	Mwt	Milk	SS	DC	Cwt	EMA	Rib	Rump	RBV %	IMF%
+2.3	-6.8	-3.1	+5.1	+35	+61	+84	+102	+10	+1.1	-0.5	+36	+0.3	+1.8	+0.1	+0.1	-0.4
65%	54%	81%	83%	84%	82%	82%	79%	74%	80%	41%	70%	69%	70%	71%	62%	74%



**ACTUALS (KGS)**

24/08/23	03/04/24	30/10/24	15/03/25
36kg	298kg	516kg	684kg

Useful Furnace son here.



**LOT: 41****TURIROA 23U820<sup>PV</sup>****PURCHASER:** \_\_\_\_\_**BORN: 06/08/23****PRICE:** \_\_\_\_\_**ID No.: 15603023U820**KAROO K12 REALIST N278 (IMP AUS)<sup>SV</sup>MILWILLAH REALITY K12 PV  
KAROO DORIS F42MATAURI REALITY 839  
MILWILLAH BARUNAH H8 SV  
ARDROSSAN EQUATOR A241 (IMP AUS)  
KAROO DORIS Y137 SVTURIROA 16M261<sup>SV</sup>KAHARAU 11-864  
TURIROA 10763KAHARAU LANCER 699  
KAHARAU 07-8032  
STERN 0768  
103256 OF TURIROA**FERTILITY**

MORPHOLOGY	79%
SCROTAL	39cm
DAM PERFORMANCE	16 ET/5 natural

**MAY 2025 TRANSTASMAN ANGUS CATTLE EVALUATION**

Dir	Dtrs	GL	B/Wt	200 Wt	400 Wt	600 Wt	Mwt	Milk	SS	DC	Cwt	EMA	Rib	Rump	RBV %	IMF%
-15.7	-3.8	-2.9	+8.0	+64	+118	+149	+157	+8	+1.0	-3.7	+99	+7.7	-1.6	-0.8	+0.8	+0.7
67%	56%	82%	82%	83%	81%	81%	78%	75%	79%	42%	70%	69%	69%	70%	62%	73%

**ACTUALS (KGS)**

06/08/23	03/04/24	30/10/24	15/03/25
36kg	381kg	672kg	772kg

Heaviest bull of his year group at weaning. Massive growth in his EBV's for those big, fast growing steers. Big EMA and CW.

**LOT: 42**

**TURIROA 23U870<sup>SV</sup>**

**PURCHASER:** \_\_\_\_\_

**BORN: 01/09/23**

**PRICE:** \_\_\_\_\_

**ID No.: 15603023U870**

RATANUI AVENGER 064<sup>SV</sup>

TURIHAUA AVENGER N59 (ET)<sup>SV</sup>  
RATANUI 7003

TURIHAUA HULK K100<sup>SV</sup>  
TURIHAUA F83  
MANGAPAPA 443<sup>SV</sup>  
RATANUI 478

TURIROA 12885

TURIROA 10683  
TURIROA 09726

TURIHAUA BREAK D92  
TURIROA FAITH 471  
KAHARAU 649  
822 OF TURIROA



**FERTILITY**

MORPHOLOGY	86%
SCROTAL	41cm
DAM PERFORMANCE	9/9

**MAY 2025 TRANSTASMAN ANGUS CATTLE EVALUATION**

Dir	Dtrs	GL	B/Wt	200 Wt	400 Wt	600 Wt	Mwt	Milk	SS	DC	Cwt	EMA	Rib	Rump	RBY %	IMF%
-4.7	+2.1	-0.9	+5.7	+41	+78	+95	+76	+13	+1.0	-3.3	+51	+2.5	+4.5	+4.6	+0.1	-1.3
64%	54%	80%	82%	83%	81%	81%	78%	73%	78%	43%	70%	68%	69%	70%	62%	73%



**ACTUALS (KGS)**

01/09/23	03/04/24	30/10/24	15/03/25
37kg	335kg	606kg	690kg

Will catch the eye. Deep bodied, bone and thickness. A lovely natured bull to top it off.

# For a no bull approach to real estate

Thinking of selling your rural or lifestyle property?

Call Tom Lane 027 866 5263 Fenton Wilson 027 498 4483

**PropertyBrokers**  | Proud to be here

**LOT: 43**

**TURIROA 23U813<sup>PV</sup>**

**PURCHASER:** \_\_\_\_\_

**BORN: 09/09/23**

**PRICE:** \_\_\_\_\_

**ID No.: 15603023U813**

KAHARAU FURNACE Q308<sup>SV</sup> | KAHARAU ATLANTIC 454<sup>SV</sup>  
KAHARAU 1076

KAHARAU ATLAS 12-75  
KAHARAU 12-9498  
KAHARAU SAMSON 11-714  
KAHARAU 12-9438

TURIROA 16M246<sup>SV</sup>

TURIROA 13778  
TURIROA TESSA 109662

CRICKLEWOOD 178  
TURIROA 04309  
TURIHAUA DIGGER C49  
TURIROA 06498



FERTILITY	
MORPHOLOGY	82%
SCROTAL	37cm
DAM PERFORMANCE	6/6

MAY 2025 TRANSTASMAN ANGUS CATTLE EVALUATION																
Dir	Dtrs	GL	B/Wt	200 Wt	400 Wt	600 Wt	Mwt	Milk	SS	DC	Cwt	EMA	Rib	Rump	RBV %	IMF%
+4.0	-4.3	-0.3	+5.0	+47	+87	+103	+95	+12	+0.9	-1.6	+46	+3.3	+0.8	+3.1	-0.3	+2.2
64%	53%	80%	82%	83%	81%	82%	78%	73%	78%	40%	69%	68%	69%	69%	60%	73%



ACTUALS (KGS)			
09/09/23	03/04/24	30/10/24	15/03/25
37kg	315kg	582kg	664kg

Length and a good outlook. 813 comes with some fats and IMF.

**LOT: 44**

**TURIROA 23U794<sup>PV</sup>**

**PURCHASER:** \_\_\_\_\_

**BORN: 10/09/23**

**PRICE:** \_\_\_\_\_

**ID No.: 15603023U794**

BLACK RIDGE SABA R50<sup>PV</sup>

TE MANIA BUFF 16314<sup>SV</sup>  
BLACK RIDGE P121<sup>SV</sup>

MATAURI REALITY 839  
TE MANIA 14129  
MATAURI NAVIGATOR L428  
BLACK RIDGE 653

TURIROA 20R602<sup>PV</sup>

TURIROA TYRANT 14843  
TURIROA 14040

S CHISUM 6175 (IMP USA)  
TURIROA 11853 (ET)  
TURIROA 11542 (ET)  
TURIROA FAITH 09668 (ET)



**FERTILITY**

MORPHOLOGY	91%
SCROTAL	43cm
DAM PERFORMANCE	2/2

**MAY 2025 TRANSTASMAN ANGUS CATTLE EVALUATION**

Dir	Dtrs	GL	B/Wt	200 Wt	400 Wt	600 Wt	Mwt	Milk	SS	DC	Cwt	EMA	Rib	Rump	RBY %	IMF%
-1.4	+1.9	-6.9	+6.7	+50	+93	+130	+123	+18	+2.7	-4.1	+59	+5.9	+0.1	+0.1	+0.1	+2.1
61%	51%	80%	81%	82%	80%	81%	77%	72%	77%	39%	68%	67%	68%	68%	59%	72%



**ACTUALS (KGS)**

10/09/23	03/04/24	30/10/24	15/03/25
34kg	271kg	590kg	700kg

Length, loin and hindquarter. Good big bull for late in the catalogue. Strong set of EBV's.

**LOT: 45****TURIROA 23U796<sup>PV</sup>****PURCHASER:** \_\_\_\_\_**BORN: 21/08/23****PRICE:** \_\_\_\_\_**ID No.: 15603023U796**KAYJAY LASER R442 (ET)<sup>SV</sup>TAIMATE LASER N 22<sup>PV</sup>  
KAYJAY PEONY K117TAIMATE LAZARUS L12<sup>PV</sup>TAIMATE 1434<sup>SV</sup>

WAITANGI E222

KAYJAY PEONY 795

TURIROA 20R562<sup>PV</sup>KAHARAU OUTLANDER 632<sup>SV</sup>  
TURIROA 17N280<sup>PV</sup>BRAVEHEART OF STERN<sup>SV</sup>

KAHARAU 09-8840

ATAHUA FREEDOM 609-10

TURIROA 14037

**FERTILITY**

MORPHOLOGY	92%
SCROTAL	40cm
DAM PERFORMANCE	2/2

**MAY 2025 TRANSTASMAN ANGUS CATTLE EVALUATION**

Dir	Dtrs	GL	B/Wt	200 Wt	400 Wt	600 Wt	Mwt	Milk	SS	DC	Cwt	EMA	Rib	Rump	RBV %	IMF%
+0.9	-3.8	-2.4	+5.1	+44	+83	+107	+91	+15	+1.3	-4.5	+48	-4.9	+2.3	+2.2	-0.8	+0.9
64%	54%	81%	81%	82%	80%	81%	78%	72%	77%	41%	68%	67%	68%	69%	60%	72%

**ACTUALS (KGS)**

21/08/23	03/04/24	30/10/24	15/03/25
34kg	277kg	540kg	655kg

Nice type here. A solid station bull.

**LOT: 46**

**TURIROA 23U779 (ET) <sup>PV</sup>**

**PURCHASER:** \_\_\_\_\_

**BORN: 14/08/23**

**PRICE:** \_\_\_\_\_

**ID No.: 15603023U779**

KAROO K12 REALIST N278 (IMP AUS) <sup>SV</sup>

MILWILLAH REALITY K12 PV  
KAROO DORIS F42

MATAURI REALITY 839  
MILWILLAH BARUNAH H8 SV  
ARDROSSAN EQUATOR A241 (IMP AUS)  
KAROO DORIS Y137 SV

TURIROA 16M261 <sup>SV</sup>

KAHARAU 11-864  
TURIROA 10763

KAHARAU LANCER 699  
KAHARAU 07-8032  
STERN 0768  
103256 OF TURIROA



**FERTILITY**

MORPHOLOGY	84%
SCROTAL	42cm
DAM PERFORMANCE	16ET/5 natural



**MAY 2025 TRANSTASMAN ANGUS CATTLE EVALUATION**

Dir	Dtrs	GL	B/Wt	200 Wt	400 Wt	600 Wt	Mwt	Milk	SS	DC	Cwt	EMA	Rib	Rump	RBY %	IMF%
-0.4	+1.9	-6.0	+3.9	+44	+84	+117	+132	+10	+2.0	-3.9	+65	-2.5	+0.5	+1.5	-0.6	+1.9
68%	57%	82%	82%	83%	81%	82%	79%	75%	80%	43%	71%	70%	70%	71%	63%	74%

**ACTUALS (KGS)**

14/08/23	03/04/24	30/10/24	15/03/25
33kg	280kg	526kg	670kg

Length and outlook. Out of a very good cow.



**LOT: 47****TURIROA 23U807<sup>PV</sup>****PURCHASER:** \_\_\_\_\_**BORN: 20/09/23****PRICE:** \_\_\_\_\_**ID No.: 15603023U807**TURIROA TOUGHNUT 21S634<sup>PV</sup>ATAHUA TOUGHNUT 378-18<sup>PV</sup>  
TURIROA 17N283<sup>PV</sup>TE MANIA 15380  
ATAHUA QUEST 231-14  
ATAHUA FREEDOM 609-10  
TURIROA 14040TURIROA 19Q500<sup>SV</sup>TANGIHAU TOP SHELF L21  
OTOKA MINNIE 083STERN 10610  
TANGIHAU J109  
WAITERENUI UNLTD 512  
OTOKA MINNIE 566**FERTILITY**

MORPHOLOGY	82%
SCROTAL	44cm
DAM PERFORMANCE	3/3

**MAY 2025 TRANSTASMAN ANGUS CATTLE EVALUATION**

Dir	Dtrs	GL	B/Wt	200 Wt	400 Wt	600 Wt	Mwt	Milk	SS	DC	Cwt	EMA	Rib	Rump	RBV %	IMF%
-9.7	-15.6	-5.4	+8.4	+56	+104	+140	+146	+9	+3.9	-2.7	+68	+5.4	+1.7	+1.0	+0.8	+0.3
63%	52%	81%	81%	82%	80%	81%	77%	72%	78%	39%	68%	67%	68%	69%	59%	72%

**ACTUALS (KGS)**

20/09/23	03/04/24	30/10/24	15/03/25
38kg	237kg	510kg	644kg

Width behind, massive loin and strong growth EBV's.



**LOT: 48****TURIROA 23U869<sup>SV</sup>****PURCHASER:** \_\_\_\_\_**BORN: 15/09/23****PRICE:** \_\_\_\_\_**ID No.: 15603023U869**RATANUI AVENGER 064<sup>SV</sup>TURIHAUA AVENGER N59 (ET)<sup>SV</sup>  
RATANUI 7003TURIHAUA HULK K100<sup>SV</sup>  
TURIHAUA F83  
MANGAPAPA 443<sup>SV</sup>  
RATANUI 478

TURIROA 12923

KAHARAU 09-127  
TURIROA 04309KAHUITARA CAVALIER 815  
RANGATIRA BEAUTY 578  
KAHARAU BONZA 39 (ET)  
F830 OF TURIROA**FERTILITY**

MORPHOLOGY	89%
SCROTAL	41cm
DAM PERFORMANCE	10/10

**MAY 2025 TRANSTASMAN ANGUS CATTLE EVALUATION**

Dir	Dtrs	GL	B/Wt	200 Wt	400 Wt	600 Wt	Mwt	Milk	SS	DC	Cwt	EMA	Rib	Rump	RBY %	IMF%
+3.2	+1.5	-2.6	+4.7	+33	+69	+87	+90	+13	+1.1	-4.4	+28	+2.4	+5.6	+6.2	+0.4	+0.0
63%	53%	79%	82%	82%	80%	81%	77%	72%	78%	41%	69%	67%	68%	68%	60%	72%

**ACTUALS (KGS)**

15/09/23	03/04/24	30/10/24	15/03/25
36kg	283kg	522kg	622kg

Great station type, moderate and compact. Avenger has left them all of a type. Massive fats.  
Dam still going at 13 years of age.



**LOT: 49****TURIROA 23U856<sup>PV</sup>****PURCHASER:** \_\_\_\_\_**BORN: 18/08/23****PRICE:** \_\_\_\_\_**ID No.: 15603023U856**RATANUI AVENGER 064<sup>SV</sup>TURIHAUA AVENGER N59 (ET)<sup>SV</sup>  
RATANUI 7003TURIHAUA HULK K100<sup>SV</sup>  
TURIHAUA F83  
MANGAPAPA 443<sup>SV</sup>  
RATANUI 478

TURIROA L088

TURIHAUA CRUMP E5 (ET)<sup>SV</sup>  
TURIROA 11874TURIHAUA CRUMBLE Y167  
TURIHAUA Q263  
STERN 0768  
TURIROA 04295**FERTILITY**

MORPHOLOGY	89%
SCROTAL	42cm
DAM PERFORMANCE	8/7-1 set twins

**MAY 2025 TRANSTASMAN ANGUS CATTLE EVALUATION**

Dir	Dtrs	GL	B/Wt	200 Wt	400 Wt	600 Wt	Mwt	Milk	SS	DC	Cwt	EMA	Rib	Rump	RBY %	IMF%
-5.9	-0.5	-5.0	+5.2	+37	+65	+90	+100	+10	+1.5	-5.1	+33	+3.6	+3.3	+2.9	+0.8	-0.3
56%	46%	64%	75%	72%	72%	75%	69%	61%	73%	40%	62%	58%	61%	61%	55%	62%

**ACTUALS (KGS)**

18/08/23	03/04/24	30/10/24	15/03/25
38kg	289kg	477kg	592kg

Another great station type. Avenger X Crump so has to be thick. Really strong NZ pedigree.



# REDSHAW LIVESTOCK LTD

LIVESTOCK AGENTS • AUCTIONEERS

*We are proud to be associated with*  
**TURIROA ANGUS**

**100% NZ Owned and operated covering the Hawke's Bay and East Coast.**  
*For all your livestock requirements, call one of our team.*

Will Maxwell

027 539 4140

Dean Freeman

027 445 1944

Ken Simpson

027 223 3169

Hamish MacDonald

027 821 0445

Scott Heasley

021 0827 3867

Carol Milligan

027 263 2241

Brian Nankervis

027 230 0481

*'Your Livestock Specialists'*



[admin@redshawlivestock.co.nz](mailto:admin@redshawlivestock.co.nz)

**LOT: 50**

**TURIROA 23U776<sup>SV</sup>**

**PURCHASER:** \_\_\_\_\_

**BORN: 21/08/23**

**PRICE:** \_\_\_\_\_

**ID No.: 15603023U776**

TURIROA NITRO 17N122<sup>SV</sup>

ATAHUA FREEDOM 609-10  
TURIROA 14002

BRAVEHEART OF STERN<sup>SV</sup>  
ATAHUA ALICE 285-05  
MERCHISTON INFINITY 774  
TURIROA 07576

TURIROA 20R604<sup>PV</sup>

CRICKLEWOOD H60  
TURIROA 16M264<sup>SV</sup>

TE MANIA 09 492  
WAITERENUI MAID E161  
KAHARAU 11-864  
TURIROA 10753



**FERTILITY**

MORPHOLOGY	85%
SCROTAL	40cm
DAM PERFORMANCE	2/2

**MAY 2025 TRANSTASMAN ANGUS CATTLE EVALUATION**

Dir	Dtrs	GL	B/Wt	200 Wt	400 Wt	600 Wt	Mwt	Milk	SS	DC	Cwt	EMA	Rib	Rump	RBV %	IMF%
+1.4	-3.3	-2.8	+6.5	+45	+83	+114	+107	+9	+2.0	-0.9	+53	+7.8	-2.4	-2.1	+1.7	+0.0
63%	53%	80%	81%	82%	80%	81%	78%	73%	78%	41%	69%	68%	69%	70%	61%	73%



**ACTUALS (KGS)**

21/08/23	03/04/24	30/10/24	15/03/25
38kg	285kg	522kg	648kg

Length here. Strong growth, EMA and RBV.

**LOT: 51****TURIROA 23U848<sup>PV</sup>****PURCHASER:** \_\_\_\_\_**BORN: 14/09/23****PRICE:** \_\_\_\_\_**ID No.: 15603023U848**MERCHISTON TYRANT N217<sup>SV</sup>TURIROA TYRANT 14843  
MERCHISTON DUCHESS 1031S CHISUM 6175 (IMP USA)  
TURIROA 11853 (ET)  
MERCHISTON TIMELINE 942  
MERCHISTON DUCHESS 573TURIROA 18P376 (ET)<sup>SV</sup>MERCHISTON STOKER 350  
TURIROA 12904STOKMAN DASH G89  
MERCHISTON BLACKBIRD 972  
STERN 0768  
TURIROA 07532**FERTILITY**

MORPHOLOGY	86%
SCROTAL	42cm
DAM PERFORMANCE	4/4

**MAY 2025 TRANSTASMAN ANGUS CATTLE EVALUATION**

Dir	Dtrs	GL	B/Wt	200 Wt	400 Wt	600 Wt	Mwt	Milk	SS	DC	Cwt	EMA	Rib	Rump	RBV %	IMF%
-6.2	+3.0	-2.9	+6.5	+45	+80	+104	+95	+17	+3.5	-2.0	+52	+3.4	+0.4	-0.8	+1.1	-2.0
64%	53%	80%	81%	82%	80%	81%	77%	73%	78%	41%	69%	68%	69%	69%	61%	73%

**ACTUALS (KGS)**

14/09/23	03/04/24	30/10/24	15/03/25
36kg	266kg	504kg	646kg

Tidy station bull here.





# FARMVETS

*Guaranteed effective animal health advice.*

**EAST COAST** ☎ **06 868 8616**

**349 Childers Road, Gisborne**

**PROUD SUPPORTERS OF**  
**TURIROA**  
**ANGUS**

**WAIROA** ☎ **06 838 3832**

**77-79 Queen Street, Wairoa**

**LOT: 52****TURIROA 23U812<sup>PV</sup>****PURCHASER:** \_\_\_\_\_**BORN: 22/09/23****PRICE:** \_\_\_\_\_**ID No.: 15603023U812**TURIROA TOUGHNUT 21S634<sup>PV</sup>ATAHUA TOUGHNUT 378-18<sup>PV</sup>  
TURIROA 17N283<sup>PV</sup>TE MANIA 15380  
ATAHUA QUEST 231-14  
ATAHUA FREEDOM 609-10  
TURIROA 14040TURIROA 19Q514<sup>SV</sup>TANGIHAU TOP SHELF L21  
TURIROA FAITH 09668 (ET)STERN 10610  
TANGIHAU J109  
WAIHOHONU 113  
TURIROA FAITH 471**FERTILITY**

MORPHOLOGY	87%
SCROTAL	36cm
DAM PERFORMANCE	3/3

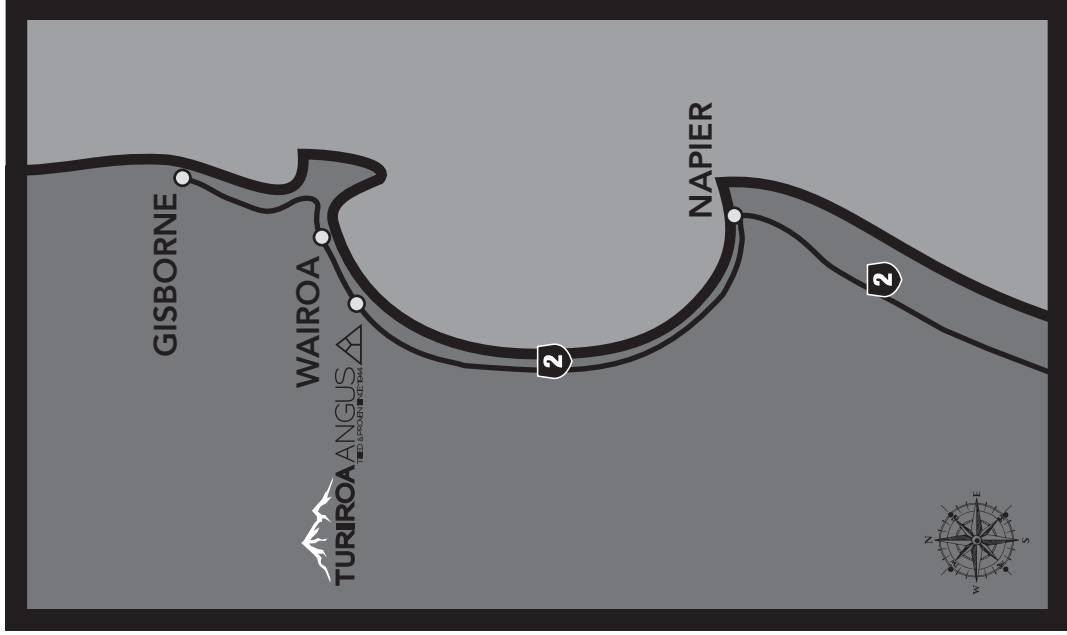
**MAY 2025 TRANSTASMAN ANGUS CATTLE EVALUATION**

Dir	Dtrs	GL	B/Wt	200 Wt	400 Wt	600 Wt	Mwt	Milk	SS	DC	Cwt	EMA	Rib	Rump	RBY %	IMF%
+2.1	+2.3	-3.7	+4.6	+34	+64	+89	+106	+2	+0.2	-2.1	+52	+2.2	+2.9	+2.6	+0.4	+0.3
62%	51%	80%	81%	81%	79%	80%	76%	71%	77%	39%	67%	66%	67%	68%	59%	71%

**ACTUALS (KGS)**

22/09/23	03/04/24	30/10/24	15/03/25
34kg	230kg	446kg	621kg

Deep middle, moderate frame. Great for the hills.



## MAP TO TURIROA STUD

539 State Highway 2, RD3, Wairoa 4193

Andrew Powdrell

**Phone:** 06 838 8805, **Mobile:** 027 622 8088

**Email:** [arpowdrell@turiroa.co.nz](mailto:arpowdrell@turiroa.co.nz)

[www.turiroaangus.co.nz](http://www.turiroaangus.co.nz)

**piv • t**  
DESIGN  
[www.pivotdesign.co.nz](http://www.pivotdesign.co.nz)

[graphics@pivotdesign.co.nz](mailto:graphics@pivotdesign.co.nz)

Phone: 06 323 0740





# THE REMARKABULLS.

In 2024 we sought your prize-worthy bulls to hero them front and centre – they really fill the frame. These beautiful bulls are worth their weight and more, requiring strong cover on sale day, and solid service every day after that. That's why we offer existing FMG clients (with an active policy), **14 days free cover** for bulls purchased at any FMG Premier Bull Sale up to the value of \$50,000 per bull, on completion of an Insurance Form.\*

Cover can be extended beyond the initial 14 days free cover for the remaining period of 12 months at 7.6% of the purchase price (rates differ for shorter policy periods).

To find out more, talk to your FMG rep, visit [fmg.co.nz/contact-us](https://fmg.co.nz/contact-us) or call us on 0800 366 466.

Top to bottom:

CHAROLAIS - Trudy and AJ McIntyre;

ANGUS - Sherson Family (Brian and Sharon Sherson, their son Rob and his wife Tracy);

HEREFORD - Jason Hill;

SOUTH DEVON - Richard and Denise Van Asch.

---

**We're here for the good of the country.**

\*Offer subject to Livestock Policy terms and exclusions, and underwriting criteria.



**FMG**  
Advice & Insurance

# FMG Premier Bull Sale Insurance Form



## What is FMG Premier Bull Insurance?

On receiving a completed FMG Premier Bull Sale Insurance form, FMG provides its existing FMG clients with an active policy 14 days free insurance for bulls purchased up to \$50,000. For bulls purchased over \$50,000, please contact an FMG representative.

## What is the length of cover?

Your specified bull(s) will be insured for 14 days once you have fully completed this form and it's received by an FMG representative. If you would like a longer period of cover, simply tick the Cover extension box below to extend your Premier Bull Insurance to 12 months. The specified bull(s) is then insured for the next 12 months at **7.6%** of the purchase price.

FMG will invoice you for this additional cover.

## What are the benefits?

✓ <i>Infertility</i>	Cover if your specified bull has to be euthanised due to permanent infertility caused by certain accidents, disease, injury, or illness.
✓ <i>Theft or death</i>	Cover for your specified bull for theft or death caused by certain accidents, disease, injury, or illness (including while in transit anywhere in New Zealand).
✓ <i>Vet costs</i>	Cover up to \$500 for treatment of your specified bull to prevent death.

## What will FMG pay?

FMG will pay the fair market value of your specified bull, less any amount you receive for the sale of the carcass, up to the amount shown on the insurance certificate.



## FMG Premier Bull Sale Insurance Form



### Apply

Please fill in this form as soon as you have purchased your new bull(s) and hand it to your FMG representative.

This form **MUST** be fully completed and you have to be an existing FMG client with an active policy to be eligible for the 14 days free Premier Bull Sale Insurance.

Purchaser full name:

FMG Account Number:

Purchaser's address:

Purchaser's phone:

Purchaser's email:

Agent arranging insurance on behalf of the purchaser? Provide your full name:

Lot:	Tag:	\$	Breed:	DOB:



## FMG Premier Bull Sale Insurance Form



### Cover extension

☐ Tick here to extend your Bull Insurance to 12 months @ 7.6% of the purchase price of your bull. *This will extend the cover beyond the initial 14 days free cover for the remaining period of 12 months.*

NO VERBAL INSTRUCTIONS  
WILL BE ACCEPTED

Signature of Purchaser or Agent:

Date:        /        /

### Disclaimer

Please note this is only a summary of the product and is subject to our specific product documentation. For full details, you should refer to the policy document. You can get these documents, and any other information you need, from your FMG representative, by calling us or visiting, [fmg.co.nz/livestockpolicy](http://fmg.co.nz/livestockpolicy)

### Privacy

FMG is collecting your personal information in order to provide you with the insurance you are requesting. The information is collected and held by FMG, at 292 Church St, Palmerston North. Contact us if you have any questions or concerns, want access to the information we have about you, or you need us to update your information.



# Bull Purchaser Instruction Slip

Please complete this slip and hand to the Booking Clerk before leaving the sale.

Purchaser's full name:	Buyer No:
Agents full name and relationship to the owner:	
If purchasing on behalf of, what is your relationship to owner?	
Purchaser's postal address:	NAIT No.:
Delivery address:	Post Code:
Farm/business name:	
Purchaser's email:	Purchaser's phone:

Lot:	Tag:	\$	Breed:	DOB:

Transport instructions:	Stock firm to be charged:

I acknowledge and agree for my personal information contained in this Purchaser Instruction to be shared between the parties involved in this bull sale, including but not limited to the vendor or their representatives, livestock agencies and transport operators. The information is shared for the purpose of completing the sale and purchase of the bull.	
NO VERBAL INSTRUCTIONS WILL BE ACCEPTED	Signature of Purchaser or Agent: <span style="float: right;">Date:     /     /</span>



## ANNUAL ON FARM SALE

Thursday 11<sup>th</sup> December 2025, 11am at the Woolshed

**SOUTHDOWN • TIGERS** (Southdown x South Suffolk)  
**SUFTEX • BELSUFTEX** (¼ Beltex, ¾ Suftex)

**Contact: Andrew Powdrell**

Phone: 06 838 8805 • Mobile: 027 622 8088 • Email: [arpowdrell@turiroa.co.nz](mailto:arpowdrell@turiroa.co.nz)

LOT	TAG
1	23U808
2	23U819
3	23U814
4	23U800
5	23U810
6	23U817
7	23U824
8	23U842
9	23U827
10	23U823
11	23U774
12	23U816
13	23U826
14	23U805
15	23U809
16	23U795
17	23U778
18	23U866

LOT	TAG
19	23U857
20	23U850
21	23U787
22	23U849
23	23U867
24	23U861
25	23U782
26	23U847
27	23U784
28	23U834
29	23U835
30	23U853
31	23U843
32	23U844
33	23U840
34	23U788
35	23U806
36	23U845

LOT	TAG
37	23U828
38	23U838
39	23U802
40	23U818
41	23U820
42	23U870
43	23U813
44	23U794
45	23U796
46	23U779
47	23U807
48	23U869
49	23U856
50	23U776
51	23U848
52	23U812

TAG	LOT
23U774	11
23U776	50
23U778	17
23U779	46
23U782	25
23U784	27
23U787	21
23U788	34
23U794	44
23U795	16
23U796	45
23U800	4
23U802	39
23U805	14
23U806	35
23U807	47
23U808	1
23U809	15

TAG	LOT
23U810	5
23U812	52
23U813	43
23U814	3
23U816	12
23U817	6
23U818	40
23U819	2
23U820	41
23U823	10
23U824	7
23U826	13
23U827	9
23U828	37
23U834	28
23U835	29
23U838	38
23U840	33

TAG	LOT
23U842	8
23U843	31
23U844	32
23U845	36
23U847	26
23U848	51
23U849	22
23U850	20
23U853	30
23U856	49
23U857	19
23U861	24
23U866	18
23U867	23
23U869	48
23U870	42